

# SHUTFORD NEWS

Issue No. 225

May / June 2019



**Shutford Festival 2019**

**ALL DAY BAR & BBQ • TEA, COFFEE & CAKES**

**LIVE BANDS FROM 5.00 PM:**  
**COLD BLUE DAZE**  
**UNDER THE COVERS**  
**THE MEANIES**

Dog Show • Pottery Workshops • Beauty, Makeup & Nails  
Encore Dance Group • Fairground Rides • Banbury X Archers  
Deddington Rifle Club • Radio Horton • Rainforest Creatures  
Shipston Bee Association • Classic Car Rally • Juggling John  
Mini Back Neck & Shoulder Massage, Aromatherapy & Crystals

Plant & Local Produce Stall • Wine & Water  
Tombola • Books, CDs & DVDs • Kids Fun Stalls

**Saturday 22nd June**  
**1.00pm - 10.30pm**  
**Manor House Park**

Tickets available on the day • Children under 12 FREE  
£2 Entrance for the afternoon • £8 from 4.00pm

SPONSORED BY





RED HORSE VALE



S.K. Auto Repairs



Fitness Classes  
www.shutfordnews.co.uk  
FitBarn Swadcliffe Lea

Visit [www.shutfordvillage.com](http://www.shutfordvillage.com) or find us on facebook /shutfordfestival/  
Proceeds will be split between Shutford Village Hall & St Martin's Church, Shutford

[www.shutfordvillage.com](http://www.shutfordvillage.com)



## Shutford's Interesting & Classic Vehicle Event

For all types of enthusiast...

**Saturday 22 June from 1:00pm**  
**Manor Park Shutford, OX15 6PF**

*For anyone owning or interested in classic cars, tractors, stationary engines, motor cycles, farm machinery etc etc...*

This is your personal invitation to "Bring it along."  
(free entry)



The first 50 arrivals will receive a Rally Plaque sponsored by, **SK Auto Repairs**, Shotteswell.

No need to register, just turn up! If you have any questions, please contact Bill - [crew@marymo.me](mailto:crew@marymo.me)  
[www.shutfordvillage.com](http://www.shutfordvillage.com)

Dear Villagers...

The village has been very busy in April & May. Firstly, we had the Easter Egg competition on Easter Monday 22 April. Thank you once again to Andy and Wendy Whitehouse for organising this year's event and for everyone who supported.



'May Madness' on May 6<sup>th</sup>, was an amazing success with a whopping £508 raised for the Shutford Playground Project. More news on the project can be found by visiting [www.shutfordvillage.com](http://www.shutfordvillage.com).

Our bus service is coming back to Shutford. The timetable is in this edition, but remember if we don't use it we will lose it! **Starts 3 June.**

Our **Shutford Festival on 22 June**, is just around the corner, lots of updates in this edition. Looking forward to another great event!

Remember to keep up with all the village news simply sign up to our newsletter by visiting [www.shutfordvillage.com](http://www.shutfordvillage.com) and completing the on-line sign up form to receive village news. Looking forward to keeping you in touch with news and events throughout the year!



Rita Livesey, Editor Email: [shutfordvillagenews@gmail.com](mailto:shutfordvillagenews@gmail.com)

**SAVE THE DATE:** The families of the late Tom Hunt and Tony Wright are holding a coffee morning in aid of Katharine House Hospice. They were both looked after so well there and we would like to say thank you by raising as much money as possible. The coffee morning will be held in Shutford Village Hall on Sunday, **22<sup>nd</sup> September 2019** from 11.30 to 2pm.

# THE SHUTFORD VILLAGE HALL TRUST

(Charity No. 304364)

## Chairman's Report for the year ended 31 March 2019

This first full year's activities of our new village hall has continued with a very high level of varied activities and many small but important improvements to the venue. All our hirers and visitors have commented very favourably on the building and villagers have worked very hard to put on events and fund raising for the hall itself and many other local charities.

The electrical installations have been finalised with the provision of dimmable lights in the main hall, wall lights in the lay-by and flood lighting to the war memorial. Racking has been installed in the storeroom which has greatly improved access to the increased number of tables and also more cooking equipment has been purchased for the kitchen but most noticeable is the "Shutford Village Hall" signage on the front stone façade. We have also acknowledged the great contribution made by Gordon Freeman to the creation of our new village hall in the form of a plaque located on the rear wall of the main hall. The flag pole has been repainted and installed in a prominent position, close to the war memorial, by the road, which was readied in time for the 100<sup>th</sup> anniversary of Armistice Day, 11<sup>th</sup> November 2018, when a sizable crowd of local people paid their respects to those villagers who fell in the two World Wars.

The regular village organisations' activities all continued throughout the year and we must sincerely thank all those people who have helped in organising and running of these. Every fund raising contribution is valued but special note should be made of the regular Thursday lunch "Meet and Eat" events that have raised so much money for the hall, the Church and other charities chosen by villagers. The food has been excellent, varied and open for anyone to attend or for the "take-away" option. Monthly Sunday morning breakfasts are appreciated and also been well attended. The Saturday/Wednesday evening film clubs events have brought a wide variety of entertainment for the enjoyment of the membership, which has grown well particularly with the addition of children's shows. Yoga and Pilates classes have proved popular too and monthly painting classes on Saturday mornings and a new Art Group on Tuesday evenings provide an opportunity for villagers to exercise their skills. The card making classes have also proved popular.

The few snagging issues raised with Genesis, our building contractor, have been reconciled, issues are still apparent with the doors and their locking mechanisms, but fortunately security had not been compromised. The AV system gave problems when the mid room I/P connection failed, making inputs from portable devices impossible. Unfortunately, the original supplier had closed down, so Blinkhorns came to the rescue, identifying the problem, suppling and fitting a new wall plate. We have now learned how to regulate the heating system much better and have had few complaints since weekly programming was introduced.

A new project was also launched during the year, jointly with the Church, where we are planning to provide a direct access between the Village Hall and St Martins Church, in the form of a flight of steps at the west end of our site. Money has been raised against an initial budget and quotations from various sources have been sought.

The financial report shows a very successful year and we must thank our committee and our many volunteers for their enthusiastic work that has made all this possible.

Roger Bancroft  
May 2019



**SHUTFORD VILLAGE HALL**  
**Income & Expense Report 1/4/2018 - 31/3/2019**  
(pending audit)

**INCOME**

**Booking Income**

Regular	2,920	
Special	614	
		3,534

**Fund Raising**

Festival	3,500	
100 Club	1,625	
Community Lunch	2,485	
Breakfast Club	757	
Bingo	482	
Film Club	688	
Craft Fayre	285	
Recipe Books	80	
Produce Show	208	
EasyFundraising	83	
		10,193

**Donations**

Steps to Church	2,000	
Misc	308	
		2,308

Grants for Steps to Church 3,000

Bank Interest 10

Misc 8

**Total Income** **19,053**

**Surplus/Deficit** **9,670**

**EXPENSES**

**Overheads**

Insurance	792	
Licences etc	238	
Cleaner	1,697	
Admin	211	
Electricity	898	
Water	116	
BT	589	
Servicing	34	
		4,576

**Misc**

100 Club	803	
Film Club	48	
Maintenance	516	
Produce Show	92	
		1,458

**Equipment**

Kitchen	139	
Misc	960	
		1,099

**Consumables**

Paper products	108	
Cleaning Materials	49	
Plastic Bags	11	
Misc	21	
		189

**Rebuild**

Interior	602	
Exterior	1,460	
		2,061

**Total Expenses** **9,383**

**FUNDS at 31/3/2019**

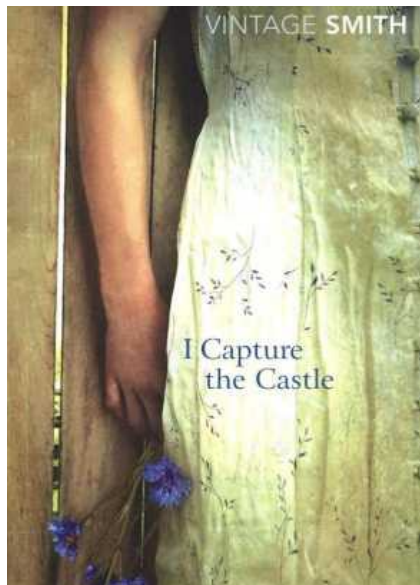
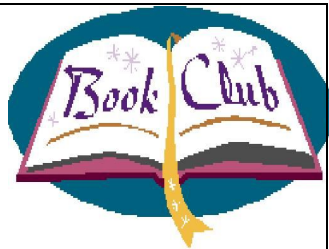
Cash	-	
Lloyds Current A/C	7,919	
Lloyds Savings	25,206	
		33,125

**RESERVES**

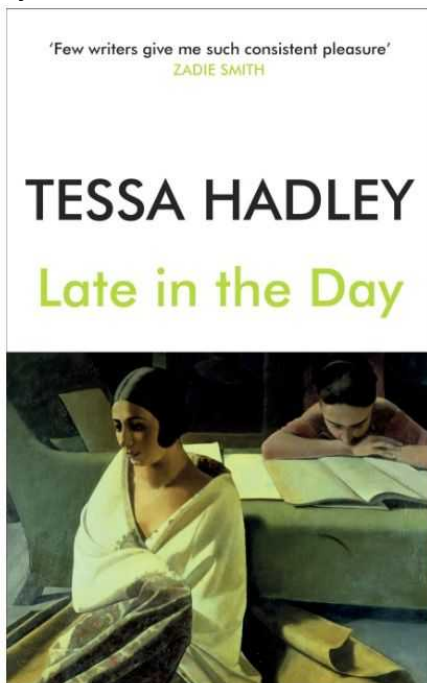
AV	3,311	
Rebuild	7,439	
100 Club Prizes	800	
Overheads	4,000	
Steps to Church	7,000	
Future Developments	10,576	
		33,125

# Shutford Book Club

The Shutford Book Club meets on the last Monday of each month in Shutford Village Hall 7:30 pm.



June 24<sup>th</sup>, "I Capture the Castle" by Dodie Smith, suggested by Val Benford, but hosted by all!



July 29<sup>th</sup>, "Late in the Day" by Tessa Hadley, hosted by Kirsten Parrish.

Currently the book club is full, however, you can always take part virtually. The books we are reading are regularly published in the Shutford News and on the village website, so feel free to read them alongside the Book Club. You can volunteer your thoughts via email to Kirsten Parrish or a note in the door of "The Nook" in Church Lane if you would like to, and we'll share them at the meetings!

## Contact details:

Kirsten Parrish: [Kirsten@kdpr.co.uk](mailto:Kirsten@kdpr.co.uk) or 780412

# Shutford Village Hall

## 100+ Club Results

### PRIZE WINNERS for April 2019

FIRST PRIZE	£35.00	John Bailey
SECOND PRIZE	£15.00	Loraine Wakelin
THIRD PRIZE	£10.00	Christine Yarborough

### PRIZE WINNERS FOR MAY 2019

FIRST PRIZE	£35.00	Kirsten Parrish
SECOND PRIZE	£15.00	Steve Mates
THIRD PRIZE	£10.00	Oliver Andrews

**The next Prize Draw will take place on 13<sup>th</sup> June at the Village Hall**



**The next dates for breakfast in the village hall  
served from 9:30–11:00 am are:**

**Sunday: 30 June & 28 July**

# Broughton Castle



## **2 Adult Admissions to the Castle for £15**

**(Please bring this page with you)  
ends 30<sup>th</sup> September 2019**

The house, gardens, tearoom and shop are open to the public from 2-5pm from 1<sup>st</sup> April to 30<sup>th</sup> September on Wednesdays, Sundays and Bank Holiday Mondays.

**Groups welcome by appointment, throughout the year.**

**Tel: 01295 276070**

**Website: [www.broughtoncastle.co.uk](http://www.broughtoncastle.co.uk)**

# SAVE THE DATE!

## 170 YEARS OF BEER

### PARTY LIKE IT'S 1849!

**Saturday 14th September**

**5pm - Late. Tickets £18.49**

ENTRY INCLUDES TWO FREE DRINKS & FOOD. JAZZ BAND, LIVE MUSIC, STREET FOOD AND MORE... YOU REALLY DON'T WANT TO MISS THIS PARTY!



### FAMILY FUN DAY

**Sunday 15th September**

**Midday - 5pm. Free Entry!**

COME ALONG AND MEET THE SHIRE HORSES, STEAM AND TRACTION ENGINES, TREASURE HUNT, BRASS BAND, BOUNCY CASTLE, ICE CREAM VAN, BEER TASTINGS AND MUCH MORE...

EST. 1849  
**HOOK NORTON**  
BREWERY  
170 YEARS OF BEER



Tickets available from the brewery or online at [www.hooky.co.uk](http://www.hooky.co.uk)

**T: 01608 730384 E: [vc@hooky.co.uk](mailto:vc@hooky.co.uk)**

**Hook Norton Brewery, Brewery Lane, Hook Norton, Banbury, Oxfordshire, OX15 5NY**

# CHURCH NEWS

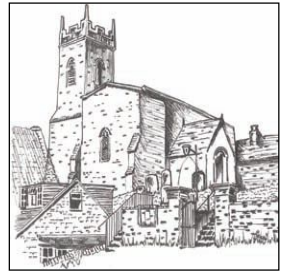
**Rector** - Revd Ronald Hawkes - 780555

**Church Wardens:**

Mr Ken Jeffs – 788308

Mr John Hodgkins - 788609

**SERVICES:** Most Sundays 9.30am but see Wykeham News & Benefice website for details



Our first Messy Church Event of the year had 22 participants: with a spring and Mothering Sunday theme, there were lots of crafts, flowers and refreshments to finish. There is no charge, but we appreciate small donations which help fund future events. The next one is on 15<sup>th</sup> June which will have a Father's Day and summer theme.

Our Lent Lunch on 15<sup>th</sup> April was well attended with 39 people supporting it. Donations totalling £275 have been given to Katharine House Hospice and we are grateful to all concerned especially those who prepared and donated food.

Our Lent Jars of Change appeal raised £140 for Helen Hodgkins Trust which helps provide the simple gift of water to people in Africa.

In addition to Lent lunches held across the benefice raising funds for charity, there were also weekly talks in Sibford Church organised by Reverend Ronald. These talks included one about prison chaplaincy, looking after older people, Katharine House Hospice, with the final one by John Lawson a reformed prisoner.

Special services were held across the benefice during Holy Week starting with a procession of palms and Eucharist in Epwell on Palm Sunday. There was Messy Church on Good Friday morning in Sibford, a reflective service in Tadmerton in the afternoon and hymns, readings and music in Broughton in the evening.

Easter Sunday started with a service of fire and Holy Communion at 6.00am in Swalcliffe followed by services of Holy Communion at each of our churches later in the morning. St Martin's Church was beautifully



decorated with spring flowers by our team of lady volunteers. Easter eggs were given to the congregation after the service.

We were pleased to welcome Timothy Bennett and Imogen Kirwin, their families and friends to St Martin`s Church for their marriage on 4<sup>th</sup> May. It was good to have a full church. We wish them health and happiness during their married life.

Christian Aid Week was 12<sup>th</sup> - 18<sup>th</sup> May and a door to door collection was held in the village finishing with a Beetle Drive in the village hall. The focus this year was on childbirth in Sierra Leone as an example of what monies collected can help fund. If you missed the collection, please visit [caweek.org](http://caweek.org) where donations can be made.

The community lunch on 6<sup>th</sup> June will be hosted by John and Julie Hodgkins raising funds for the church. Later that day, John and Ken, the churchwardens will be formerly enrolled at a service led by The Archdeacon of Dorchester at St Mary`s Church in Banbury at 7.30pm.

A church team will be organising and serving teas at the Village Festival on 22<sup>nd</sup> June: we look forward to a fine day when villagers and others can get together to make the event a social and financial success.

The church is open each day and people of all denominations or none are welcome at any of our services or to use the church for some quiet time. The church bench is a good place to sit and watch the world go by and for most of the year there are wildflowers to see in the churchyard. The swallows have returned to the church porch and butterflies appear from time to time in church all year round.

Organised worship is not for most, but each week we have different bible readings, time to reflect on them and some good hymns. We sometimes have refreshments and always have time to chat before and after the services. Whether you believe in God or not, Christian values do play a great part in daily life with neighbourliness at the centre. Let`s be thankful for all the caring that takes place quietly in Shutford.

Contact [KJJ@kennyjohn.co.uk](mailto:KJJ@kennyjohn.co.uk) or visit the church website and notice boards for event and detailed service information.

# Illuminate & Celebrate in 2019!



**Don't forget to get your special dates in for 2019!**

If you have a special celebration, maybe a birthday coming up, or a loved one you would like to remember, a christening or some other occasion in 2019.

How special it would be for the church tower to be illuminated for this occasion for a donation of only £10. Please get in touch with Ken Jeffs on [KJJ@kennyjohn.co.uk](mailto:KJJ@kennyjohn.co.uk).

Below is a list of those who have been or will be remembering a special day:

<b>Date</b>	<b>Name</b>	<b>Occasion</b>
8 <sup>th</sup> May	Victoria & Debbie Harvey	Dorothy Rogers' 80 <sup>th</sup> Birthday
17 <sup>th</sup> May	Roger & Geraldine Bancroft	Golden Wedding Anniversary
21 <sup>st</sup> May	Joe Cusiter	Lena's Birthday
30 <sup>th</sup> May	Jeffs family	Ken's Birthday
4 <sup>th</sup> June	Debbie Pitt	Magnus' 7 <sup>th</sup> Birthday
17 <sup>th</sup> June	Martin & Maria Morris	Wedding Anniversary
22 <sup>nd</sup> June	Anon	Shutford Festival
13 <sup>th</sup> July	Rita & Simon	Charley Dog Birthday

Any donations received after deadline will be mentioned in the next SN issue; where more than one donation is received for a specific day, illuminations will take place on following days.

## SHUTFORD WI

Our speaker in April was Mike Payne who told us about the "History of Pinewood Studios" from the original country house to the present. We were reminded of past films and the movie stars of yesteryear with slides, anecdotes and a display of autographed photographs to look at after the talk.

Later in April, four of our members attended a Group meeting hosted by Bloxham WI when we were entertained by Alix Booth and her puppets recounting the 'The History of Punch & Judy'. The hall was decorated in a fairground theme and we consumed candy floss and popcorn followed by hot dogs & chips.

May saw the discussion of and voting on the two Resolutions to be presented at the Annual Meeting. This year these were 'A Call Against the Decline in Local Bus Services' and 'Don't Fear the Smear'. Our votes and those of three other local WIs will be taken forward to the AM in Bournemouth at the beginning of June by one of our members as link delegate.

Visitors will be made very welcome at any of our forthcoming meetings, held in Shutford Village Hall on Tuesdays at 10am, when our future speakers will be:

June 4 <sup>th</sup>	Julia Miles - Ragbag and Cocktail
July	No meeting
August 6 <sup>th</sup>	Summer Social

For further information on our WI, please contact Geraldine on 780579 or Jenny on 780570



# Shutford Parish Council Meeting

## Wednesday 8<sup>th</sup> May at 7.30pm in Shutford Village Hall

**The meeting commenced at 7.30pm**

**Present:** Cllrs Debbie Pitt, Helen Nixseaman, Ashley Taylor, Carolyn Rann, Sandy Forrester, Tom Parrish and David Best, Parish Clerk. Also present were 12 members of the public.

**Apologies for absence:** Cllr George Reynolds

<b>19/001</b>	<b>Election of Chair, Vice Chair, and responsibilities of Councillors:</b> <b>Cllr Debbie Pitt was elected Chair</b> (proposed Cllr Taylor, seconded Cllr Nixseaman) <b>Cllr Helen Nixseaman was elected Vice Chair</b> (proposed Cllr Rann, seconded Cllr Pitt) The following Councillor responsibilities were agreed: <b>Allotments</b> – Cllr Pitt & Cllr Parish (proposed Cllr Rann, seconded Cllr Nixseaman) <b>Assets</b> – Cllr Pitt (proposed Cllr Taylor, seconded Cllr Rann) <b>Dairyground</b> – Cllr Rann & Nixseaman (proposed Cllr Pitt, seconded Cllr Parrish) <b>Dairyground Weekly Inspection</b> – Cllr Taylor (proposed Cllr Parrish, seconded Cllr Pitt) <b>Defibrillator</b> – Cllr Taylor (proposed Cllr Pitt, seconded Cllr Rann) <b>Highways/Signs</b> – Cllr Forrester (proposed Cllr Pitt, seconded Cllr Rann) <b>Planning</b> – Cllr Parrish (proposed Cllr Pitt, seconded Cllr Taylor) <b>Village Hall Rep</b> – Cllr Rann (proposed Cllr Pitt, seconded Cllr Parrish)
<b>19/002</b>	<b>Declarations of Interest:</b> None although a member of the public suggested that Councillors who live at the Dairyground should declare an interest in that.
<b>19/003</b>	<b>Minutes of the last meeting:</b> It was <b>RESOLVED</b> that the minutes of the meetings held on 13 <sup>th</sup> March were a correct record and signed. Proposed by Cllr Carolyn Rann, Seconded by Cllr Ashley Taylor.
<b>19/004</b>	<b>Matters arising from the minutes:</b> <b>Actions List</b> – The actions list was reviewed and will be published on the website.
<b>19/005</b> 19/005/1  19/005/2  19/005/3 19/005/4  19/005/5  19/005/6	<b>Parish Matters:</b> <b>Neighbourhood Watch</b> – It was agreed that Cllr Pitt will check whether MR N Voce is still co-ordinating this and happy to continue. The Police attended a Thursday Lunch to talk about Neighbourhood watch and undertook to drop off leaflets. <b>CDC Community Lottery</b> – It was decided not to sign up to this and details have been passed to the Village Hall Committee to see if they are interested. <b>Defibrillator</b> – It was confirmed that replacement pads will be ordered prior to their expiry date. <b>Allotment Rent Increase</b> – It was agreed to adopt the proposed increased rates. An increase had been discussed at two meetings with Allotment Holders. Any surpluses will be invested back into the allotments. New agreements will be issued. It was reported that there is currently only one empty plot. <b>Litter Pick</b> – The chair thanked all those who participated in the village clear up and to Ken Jeffs for his ongoing litter picking. It is hoped that more volunteers will assist next year. The Parish Council will try to schedule the pick on a Saturday rather than a Sunday next year. <b>Dairyground</b> – Cllr Nixseaman gave a detailed update on progress explaining that some swings have been replaced and plans for the proposed second phase are being discussed with the supplier. Feedback from parishioners was generally positive but some have expressed concerns which include parking congestion, anti-social behaviour, devaluation of house prices, the scale of the play area and the level of consultation with the householders on the Dairyground. It was agreed that a meeting will be convened with Dairyground home owners.
<b>19/006</b> 18/006/1  19/006/2 19/006/3  19/006/4	<b>Finance:</b> <b>Year End Accounts</b> – These were reviewed and arrangements have been made for an Internal Audit. They will be published shortly at <a href="http://www.shutfordvillage.com/parish-council-meetings">http://www.shutfordvillage.com/parish-council-meetings</a> <b>Bank Reconciliation</b> – This was reviewed and agreed. <b>Annual Governance and Accountability Return (AGAR) Governance Statement</b> – This was reviewed and agreed. <b>AGAR Accounting Statement</b> – This was reviewed and agreed.

**Shutford Parish Council Meeting**  
**Wednesday 8<sup>th</sup> May at 7.30pm in Shutford Village Hall**

<b>19/007</b>	<b>Correspondence:</b> 8 positive communications and two negative communications expressing concern about the play area work and plans have been received.
<b>19/008</b>	<b>Planning:</b> There have been no planning applications since the last meeting and there are no outstanding applications awaiting approval.
<b>19/009</b> 19/009/1  19/009/2  19/009/3 19/009/4 19/009/5	<b>Any Other Business:</b> <b>Moving Road Signs and Speeding</b> – A member of the public expressed concerns that there are some potentially dangerous entrances to properties and asked if anything could be done to improve safety. <b>Parking Outside the Village Hall</b> – Cars are sometimes parked jutting out into the road. This will be raised at the next Village Hall meeting. <b>Dog Waste Bags</b> – A member of the public thanked the person for providing these. <b>Noticeboard and posts round Jame Corner</b> – It was agreed that these will be repainted. <b>New Bench</b> – The back of this does not appear to be very strong. This will be investigated.

The next Parish Council Meeting will be held on Wednesday 10<sup>th</sup> July 2019 at 7.30pm in the Village Hall

There being no other business, the meeting closed at 9.02pm

**Shutford Parish Annual Parish Meeting**  
**Wednesday 8<sup>th</sup> May at 7.00pm in Shutford Village Hall**

**The meeting commenced at 7.00pm**

**Present:** Cllrs Debbie Pitt, Helen Nixseaman, Ashley Taylor, Carolyn Rann, Sandy Forrester and David Best, Parish Clerk. Also present were 9 members of the public.

**Apologies for absence:** Cllr George Reynolds, Tom Parrish

<b>19/010</b>	<b>Minutes of the last meeting:</b> It was <b>RESOLVED</b> that the minutes of the last Annual Parish Meeting held on 9 <sup>th</sup> May were a correct record and signed (unanimous).
<b>19/011</b>	<b>Chair's Report:</b> The Chair gave a detailed report on the activities of the Parish Council which are attached to the minutes
<b>19/012</b> 19/012/1 19/012/2	<b>Open Forum for Parishioners:</b> <b>New Bus Service</b> – A parishioner reported that the new bus service to the village is due to commence on 3 <sup>rd</sup> June but to date no timetable has been received. The case was made that it is difficult to drive into Banbury where the traffic is very congested. There is a need to encourage Shutford residents and neighbouring villages to use the bus otherwise it could be withdrawn. The bus is subsidised by Warwickshire County Council <b>Dairyground</b> – One parishioner commented that the Dairyground should not be referred to as a playground as it is an open space. Another parishioner commented that it was a great achievement to have received grants for the playground.

There being no other business, the meeting closed at 7:12pm





# Vote for

## Shutford Playground Project

in the Calor Rural Community Fund

We've applied for funding for

### Multi-Activity Play Tractor

If we secure enough votes, we could receive **£2,500** in funding.

Help us create something special – vote for us today and let's make it happen! Thank you.

[www.calor.co.uk/communityfund](http://www.calor.co.uk/communityfund)



Voting open from 2<sup>nd</sup> May - 17<sup>th</sup> June 2019



**Rural  
Community  
Fund**



## Shutford Playground refurbishment well on its way...

With a grant of £10k already secured from The National Lottery Community Fund, donations from the village of £400 from the Go Funding page, and voting has begun for a Calor Rural Community Fund for £2.5k, the Shutford Playground refurbishment is well on its way, co-ordinated by the Parish Council and an active village working party.



The first fund raising event was held in Shutford on May 6<sup>th</sup> with an amazing turn out from both Shutfordians and surrounding villages. Families were treated to a fun Treasure Hunt around the village and then lots of activities in the village hall, such as Lucky Dip & Splat The Rat! £508 was raised which is an

amazing amount. To keep up to date on the Playground developments, please visit [www.shutfordvillage.com](http://www.shutfordvillage.com)

Great news a bus service is coming back to Shutford starting

**Monday 3 June!**

The number of the bus is 6 and the times it runs are as follows:

**Monday-Saturdays**

Leaving	Time	Arriving	Time	Arriving	Time
Shutford	1126	Banbury Bus Stn	1143	Gateway retail	1153
Leaving	Time	Leaving	Time	Arriving	Time
Gateway retail	1010	Banbury Bus Stn	1020	Shutford	1047
Gateway retail	1340	Banbury Bus Stn	1350	Shutford	1407

**In School Holidays (SSH): Monday-Saturdays**

Leaving	Time	Arriving	Time	Arriving	Time
Shutford	1126	Banbury Bus Stn	1143	Gateway retail	1153
Shutford	1516	Banbury Bus Stn	1533	Gateway retail	1543
Leaving	Time	Arriving	Time	Arriving	Time
Gateway retail	1010	Banbury Bus Stn	1020	Shutford	1047
Gateway retail	1340	Banbury Bus Stn	1350	Shutford	1407
Gateway retail	1600	Banbury Bus Stn	1610	Shutford	1627

# *Outstanding Natural Spirits*



FROM OUR AWARD-WINNING COTSWOLDS DRY GIN TO OUR BRAND NEW COTSWOLDS SINGLE MALT WHISKY, EVERYTHING WE MAKE IS ABOUT QUALITY AND FLAVOUR ABOVE ALL ELSE.



COTSWOLDSDISTILLERY.COM

## Vintage Heal's posters at Upton House and Gardens

**Unique opportunity to see Heal's original advertising posters on display for the first time outside of their iconic London store.**

From now until the end of July, visitors to Upton House can enjoy an exclusive collection of vintage posters dating from 1920s-1980s from London's Tottenham Court Road furniture store: Heal's. The posters are currently on display in The Squash Court Gallery at the National Trust's Upton House and Gardens in Warwickshire.



The exhibition, curated by a dedicated team at Upton, dovetails perfectly with the 'Made To Measure Home' story that Upton House has shared with visitors since March 2017. "Lord and Lady Bearsted totally transformed the house when they came in in 1927 and switched all of the heavy Victorian furnishings for the latest mod cons and home comforts, turning Upton into a luxurious country weekend retreat," said Dr Celia Hughes, National Trust Visitor Experience Officer – Research & Interpretation.

In addition to the Heal's posters, visitors can also see a striking selection of original 1930s Shell advertising posters, such as the 160 miles an hour racing car and the Imperial Airways posters, on loan from the National Motor Museum. Having the two collections together, in a building which epitomises the opulence and sophistication of the inter-war period, really helps to evoke the spirit of the age.

[www.nationaltrust.org.uk/upton-house-and-gardens](http://www.nationaltrust.org.uk/upton-house-and-gardens)



We are delighted to present the **Shutford Kids Film Club** in the village hall. Next film is....



**Sunday  
23 June  
(Doors open at  
2:30 pm)**

**Membership for a calendar year  
(October 2018 – September 2019).  
Films are every 6 weeks including a Christmas  
one. Membership costs £5.00.  
Contact Zoe: [wellszoe@hotmail.com](mailto:wellszoe@hotmail.com)**





## Shutford Village Hall

Doors open 7:00 pm / Film starts 7:30pm



Wednesday, 26 June "The Favorite"

Wednesday, 24 July "The Old Man & His Gun"



**Membership (calendar year September 2018 – August 2019)  
only costs £12.00 for adults and £6.00 young adults (12-18).**



## FELDON VALLEY

Relaxed Restaurant & Bar at Feldon Valley now open for bookings – only 7 miles from Shutford!

Join us for Sunday Lunch, order from the Bar Menu daily, enjoy the stunning balcony views or book dinner from April – Everyone is welcome.

Our golf course is looking fantastic and with a 25 bedroom hotel due for launch in May we hope to create a real destination for the local communities.

We also have a small gym with memberships available at £20 per month for the first 50 members.

Visit our website at [www.feldonvalley.co.uk](http://www.feldonvalley.co.uk)

Call us on 01608 685 633

Email us on [david@feldonvalley.co.uk](mailto:david@feldonvalley.co.uk)

*Community – Nature - Cotswolds*

### **Tysoe NGS Open Gardens: Saturday 1<sup>st</sup> & Sunday 2<sup>nd</sup> June 2:00-6:00 pm**

Once again a group of 10 gardens in Tysoe will be celebrating the start of June by opening their gates on behalf of the NGS charities. Can't guarantee perfect weather, they can promise a warm welcome, a good afternoon's stroll (or free bus ride) round an interesting variety of gardens, and an excellent WI tea in the village hall. More information at [www.ngs.org.uk/find-a-garden/garden/33230/](http://www.ngs.org.uk/find-a-garden/garden/33230/).





## Fitness Classes

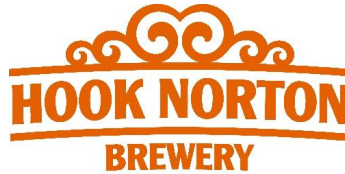
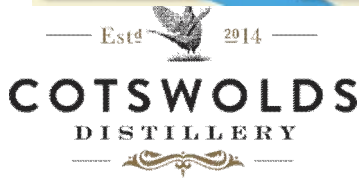
[www.dovecotefitness.co.uk](http://www.dovecotefitness.co.uk)

FitBarn Swalcliffe lea

*The team from Dovecote  
Fitness, Massage and Wellness  
will be at this year's festival,  
providing mini back neck and  
shoulder massages, aromatherapy  
and crystals.*



Thank you to all our Sponsors,  
Supporters and Friends of the  
Festival



*Boden*



Upton House and Gardens

*Serenity at Sibford*  
Luxury Treatments in Peaceful Countryside



BROUGHTON CASTLE



OAK TREE BARN



## Shutford Festival Band Line-up

**Cold Blue Daze from 5:30 pm**



**Under the Covers from 7:15 pm**



**The Meanies from 9:00 pm**





*Jo and Co from  
Serenity will be  
offering Nail  
Shape & Paint and  
Festival Glitter  
Make-Up with  
Refreshments in  
their Chill-out  
Zone*

*Saturday 22 June from 1:00pm*

*Bookings to be taken on the day*

*Adults: £10 each treatment*

*Kids: £5 each treatment*

*Serenity at Sibford, Gautherns Barn, Sibford Gower,  
Banbury OX15 5RY [www.serenityatsibford.co.uk](http://www.serenityatsibford.co.uk)*





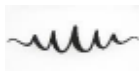
Fired Up Studios  
Ceramics Workshops & Gallery



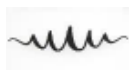
## *Fired up Studios*

*Saturday 22 June from 1:15pm*

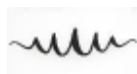
*1:20-1:40 pm: Demonstration: Throwing on the potter's Wheel*



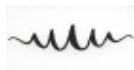
*Workshop, Throw a pot on the wheel sign up for a 15 minute session here.*



*2:20-2:40 pm: Demonstration: Animal sculptures*



*Workshop: Make your own animal sculpture  
max 10 at a time*



*Please note the workshops are FREE. Want to keep your pot? Simply pay £10 for materials and the firing charge. Pots can be collected from Shutford Village Hall date to be confirmed.*





## Children's Festival Competition

Design and draw a face painting image on A4 paper. You can choose from an animal, a film character, a flower or something else. Here are some ideas but we are looking for your imagination in coming up with a design of your own!



Remember to add your name and age group to the back of the drawing.

Prizes & certificates will be awarded to two age groups:

- Under 7
- 7 - 11 years

### Entry Rules:

A4 paper size. Entries to be brought to the Shutford Festival at 12:00 pm Saturday 22 June 2019, prior to judging. Winners will be announced during the Festival at approximately 2.00pm. ***Please note that any entries not collected before 4.00pm on the day of the Festival will be disposed of.***

Sponsored by







COFFEE SHOP  
BREAKFAST'S AND LUNCH'S

SUGARSWELL  
BUSINESS PARK

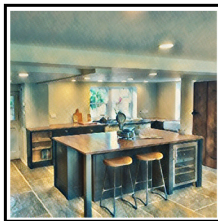
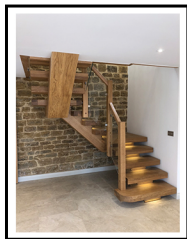
OPEN

MON-THURS  
8AM-3PM  
FRIDAY  
8AM-9PM  
SATURDAY  
8AM-1PM

[WWW.MONKEYBEANCOFFEE.COM](http://WWW.MONKEYBEANCOFFEE.COM)

Monkeywood

*Furniture by Tom Coleman*



VIST OUR SHOWROOM AT SUGARSWELL BUSINESS PARK

[WWW.MONKEYWOOD.CO.UK](http://WWW.MONKEYWOOD.CO.UK)

# APLINS

## YOUR LOCAL SOLICITORS

Traditional standards  
with a modern approach

- **House Sales & Purchases**
  - **Divorce, Separation  
and Children issues**
- **Wills, Probate & Lasting Powers of  
Attorney**
- **Trusts & Inheritance Tax Planning**
  - **Commercial Property**

36 West Bar  
Banbury  
OX16 9RU  
[www.aplins.co.uk](http://www.aplins.co.uk)

**(01295) 251234**

## ACTIVE CONNEXIONS

'Truly personal computer support, making IT work - for you!'

Home and Small Business Computer Services

Support for PCs and MACs

Repair and supply of laptop and desktop systems

Wireless and wired networks installed and maintained

Broadband connections configured

Home and Small Office telephone systems supplied and maintained

Call Derek Brotherston – 01608 730989

Or email – [enquiries@activeconnexions.co.uk](mailto:enquiries@activeconnexions.co.uk)

Supporting clients in North Oxfordshire since 2001

[www.activeconnexions.co.uk](http://www.activeconnexions.co.uk)



# COUNTY Oil Tank SOLUTIONS

— The Oil and Water Tank Specialist —

- Free Tank Surveys
- Domestic & Commercial Tank Replacements
- Tank Servicing & Tank Disposals
- AGA & Rayburn Servicing
- GAUGES - supplied and fitted
- Hire Tanks
- Locally based in OX7

**24 Hour  
Emergency Call Out**  
for Failed or Leaking  
Oil Tanks and  
Pipework

**Call us on 07799 643455 for ALL your tank needs**

Email: [james@countyoiltanksolutions.com](mailto:james@countyoiltanksolutions.com)

Website: [www.countyoiltanksolutions.com](http://www.countyoiltanksolutions.com)

**OFTEC REGISTERED**

## RYCOTE GARDEN MACHINERY



**Lawnmower and Garden Tractor**

*Repair • Service • Sales*

*Mobile • We Come To You*

*On-Site • Free Quotes*

**New and Used Mower sales • Trade-In**

**07396 369534 • 01327 437921**

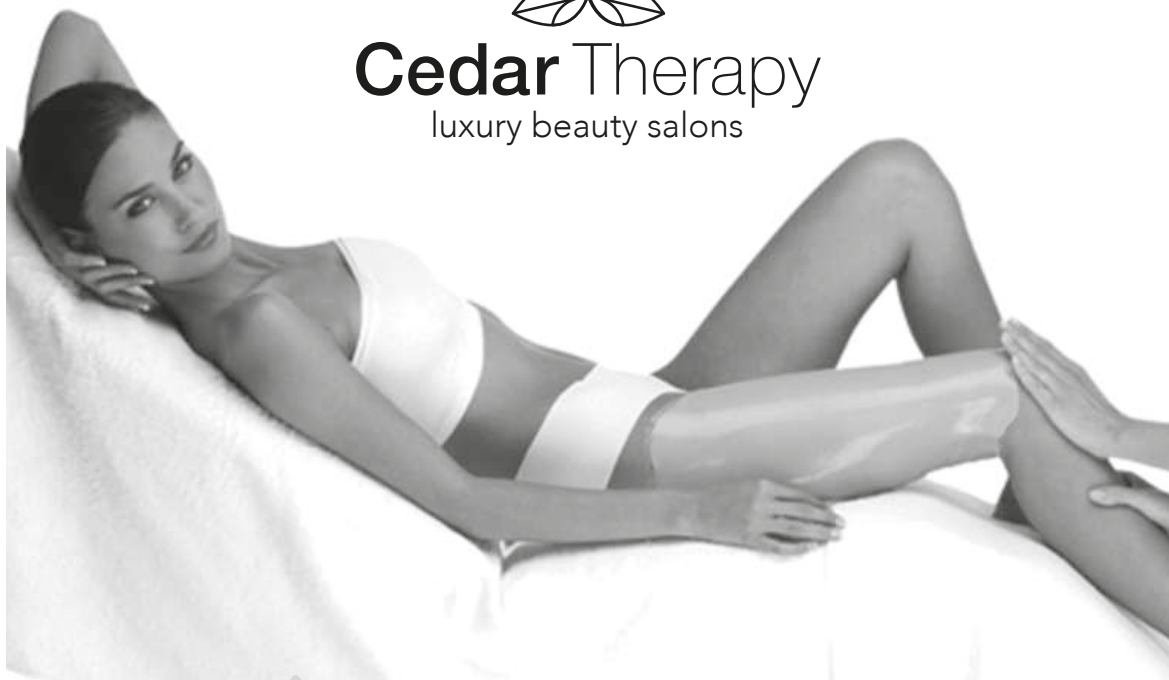
***[rycotegardenmachinery@outlook.com](mailto:rycotegardenmachinery@outlook.com)***

***[rycote.wixsite.com/garden](http://rycote.wixsite.com/garden)***



# Cedar Therapy

luxury beauty salons



Restore your mind and body with Guinot's invigorating and detoxifying body wrap. A powerful blend of exfoliation, massage and purifying alginate for targeted toning and improved circulation, the perfect treatment for a wonderful pre-summer pick me up.

## June Treat

**Try for £50 RRP £70 – A saving of £20!**



**Cedar Therapy**  
luxury beauty salons

Online bookings available at  
[cedartherapy.com](http://cedartherapy.com)



Market Place  
Deddington OX15 0SE  
01869 390000

4 West Street  
Chipping Norton OX7 5AA  
01608 489000

High Street  
Bloxxham OX15 4LU  
01295 404040

**FIT BARN**  
**FITNESS CLASSES**  
**MASSAGE CLINIC**  
**SPIN STUDIO**

**After school drop off classes**

**07802537100**

**[www.dovecotefitness.co.uk](http://www.dovecotefitness.co.uk)**



**DOVECOTE**  
FITNESS • MASSAGE • WELLNESS

**Swalcliffe Lea**  
**Oxon OX156ET**



## **Children's Day Nursery** **Epwell**

- Care for children aged 2 to 5 years
- Full and part time places available
- Open Monday to Friday 9.00am – 4.00pm.
- Ofsted rating: Outstanding
- Competitive rates
- Early years grant registered.

The nursery provides excellent opportunities for children to explore and learn through play under the guidance of highly trained, experienced and caring staff.

Ring Julia on: 01295 780580 or  
e-mail [Julia@arknursery.net](mailto:Julia@arknursery.net)



## **PTC FRAMING**

Let us enhance a favourite painting, that cherished photograph or a specially selected gift with a hand-made frame and mount chosen with care and finished to high quality standards.

Please give us a call on the new number below, or send an email, we would love to hear from you

**01295 788099**



PTC Framing  
Pear Tree Cottage, Lower End, Shutford  
[teresaptc@hotmail.com](mailto:teresaptc@hotmail.com)



# rachel berger

## INTERIORS

We provide a comprehensive interior decoration service that includes:

- Upholstery
- Curtains, blinds and soft furnishings
- Hand painted furniture
- Lampshades and lighting
- Artwork
- Gilding and mirrors.
- Decorative wall finishes
- Hand painted natural wood beams
- Colour and decorating consultancy
- De-cluttering and Home-staging service
- Beautiful faux silk flowers
- Stockist of Osborne and Little, Linwood, Designers Guild and many more...

Our service is completely bespoke and we are happy to work with you and your budget to help you get the best out of your home.

Contact email: [rachel.berger@btinternet.com](mailto:rachel.berger@btinternet.com)

Telephone: Rachel on: 07913 546867

Check us out at [www.rachelberger.co.uk](http://www.rachelberger.co.uk)  
and follow us on facebook and twitter.





BESPOKE DESIGN SERVICE FOR  
CUSTOM MADE FURNISHINGS

**Pattern book room for you  
to browse Fabric designs**

**Curtains, Blinds & Cushions**

**Loose covers & Lampsphade making**

**Headboards & bedspreads**

**Curtain poles & tracks**

**New Sofas & chairs & reupholstery**



**01295 788145**

[ann@annwoolgrove.com](mailto:ann@annwoolgrove.com) | [ann@yarnhill.co.uk](mailto:ann@yarnhill.co.uk)

[www.annwoolgrove.com](http://www.annwoolgrove.com)



**BESPOKE HANDMADE LAMPSHADES**

**PERSONALISED DESIGN SERVICE**

**CONTEMPORARY AND CLASSICAL DESIGNS**

**EXTENSIVE RANGE OF FABRICS AND MANY BEAUTIFUL TRIMS**

**RE-COVERING SERVICE AVAILABLE**

**ANN WOOLGROVE**  
TEL/FAX: 01295 788145  
[ann@yarnhill.co.uk](mailto:ann@yarnhill.co.uk)  
Oxfordshire/Cotswolds

**[www.yarnhill.co.uk](http://www.yarnhill.co.uk)**

**LYNN HAMPTON**  
TEL: 01442 215577  
[lynn@yarnhill.co.uk](mailto:lynn@yarnhill.co.uk)  
Hertfordshire/London

# Quarry Nurseries

Philip Gilbert



## 2019

• Open from April 20th



Quarry Road, Hornton, Nr Banbury, Oxon OX15 6DF

Tel Home: 01295 670367 Nursery: 07903 655267 [www.quarrynurseries.co.uk](http://www.quarrynurseries.co.uk)

### Opening Hours:

**Spring:** April 20th to June 22nd 7 Days a Week: 10am - 5pm

**Summer:** June 26th to July 6th Wed, Thurs, Fri & Sat 10am - 5pm

**Autumn:** Sept 4th to Oct 27th Wed, Thurs, Fri, Sat & Sun: 10am - 5pm or dusk if earlier

**Open Bank Holidays:** 6th May & 27th May

### Find us:

After leaving Wroxton, A422 Banbury to Stratford Road, drive past the Akenon-Sherrington Recycle Centre turn on your left. Take the next turning right, signposted Hornton and Honey. We are on the left about 1/2 mile along Quarry road.

# The Firs Garage

- All Makes Vehicle Servicing
- Competitive Prices
- Factory trained mechanics
- MOT • Parts • Bodyshop • Fuel
- Large site with easy parking
- Extensive range of new and used vehicles



**ALL MAKES SERVICING**

**Hook Norton • Oxon • OX15 5DD** (1 mile north of Hook Norton Village)  
**Tel: 01608 737349/737641 • [www.firs-garage.com](http://www.firs-garage.com)**

Family Business established 1960



## Jonathan Perry – Chimney Sweep

Guild of Master Chimney Sweeps Qualified

Agas, Inglenooks, multi-fuel stoves and open fires all swept. All work certified for house insurance purposes.

For a clean professional and friendly service please contact me on:

**Mobile: 07557 058051**

**Email: [jperrychimneysweep@gmail.com](mailto:jperrychimneysweep@gmail.com)**





**SMITHS NEWSAGENTS**

**We deliver daily newspapers  
and magazines to the village.**

**Any combination of  
days/week catered for.**

**Ring us on 01295 268499  
or e-mail  
info@smithsnewsagents.co.uk**



**SIMPLY BEAUTIFUL DECORATION**

**All forms of interior and exterior painting  
and decorating, specialising in murals.**



**T: 01295 811026  
E: pete@noahsarkpainting.co.uk  
W: noahsarkpainting.co.uk**

**Pebsham Cottage, Aynho Road, Adderbury  
Oxfordshire, OX17 3NL**



**Red Horse Vale Ltd**

**Windmill Farm  
Banbury Road (A422)  
Oxhill**

**Warwickshire CV35 0RL**

**Tel: 01926 642832**

**Solid Fuels  
Logs and Kindling Wood  
Gas in Cylinders  
Central Heating Oil  
Farm Oils  
Oil Tanks  
Sand and Ballast  
Cement  
Slabs  
Fencing Materials  
Garden Supplies  
Top Soil, Composts, Wood Chippings  
Flower Pots  
Animal Feeds  
Garden Sheds**

***Call us for a free quotation!***

**Shop on-line at [redhorsevale.co.uk](http://redhorsevale.co.uk)**

**MasterCard**

**VISA**

**VISA  
Electron**

**Maestro**

**SOLO**



## FAIRFAX INTERIORS

*The Old Bakery, High Street, Lower Brailes,  
nr Banbury, Oxfordshire OX15 5HW  
Tel: 01608 685301*

*e-mail: [info@fairfaxinteriors.com](mailto:info@fairfaxinteriors.com)*

*website: [www.fairfaxinteriors.com](http://www.fairfaxinteriors.com)*

For over 20 years **Fairfax Interiors**, under the guidance of owner Caroline Elliott, has helped people throughout the United Kingdom to improve their homes. Fairfax has one of the largest collections of designer fabrics, wallpapers and trimmings in the south of England. This coupled with a passion for design and an unerring ability to fulfil clients needs make this a unique Interiors Design Practice.

Soft furnishings and curtains are made in house by an exceptionally skilled team of seamstresses; fitting and upholstery are carried out to exacting standards ensuring total customer satisfaction. Fairfax provides project management for full refurbishment, as well as dressing houses for sale.

Caroline likes to support local and emerging designers together with more established names such as Zoffany, Designers Guild, Andrew Martin and Pierre Frey to name just some from the vast selection available to view in the friendly and easily accessible showroom and design studio.



## The Croft Beauty Studio

### Skincare, Massage and Beauty Treatments in Epwell

- Facials using Neal's Yard Organic Remedies
- Swedish and Deep Tissue Massage
  - Manicure / Pedicure
- Lash and brow tinting / shaping
- Waxing, including Brazilian and Hollywood with hot wax

Contact Carol – 07841 657 764

[www.thecroftbeautystudio.co.uk](http://www.thecroftbeautystudio.co.uk)

[www.uk.nyrorganic.com/shop/croftbeautystudio](http://www.uk.nyrorganic.com/shop/croftbeautystudio)

# *Phil's Auto repairs*

*Lower end shutford*

*Servicing - Repairs - Fault finding/diagnostics  
All makes and models*

////////////////////////////////////

*Qualified technician*

////////////////////////////////////

*Follow my Facebook page at  
Phils Auto repairs*

*01295780941 - 07786668331*

**milk&more**

**Andrew Butler**

**Your local milkman delivering  
milk and groceries to your door**

**0845 606 3 606**

**[www.milkandmore.co.uk](http://www.milkandmore.co.uk)**



# Serenity at Sibford

Gautherns Barn (nr Temple Mill)

01295 788463

**Jo is looking forward to seeing you in her little haven of peace and tranquility for this, her 12<sup>th</sup> year in Sibford!**

Specialist in Environ and Guinot facials and skincare,  
OPI gel manicures and pedicures, LVL lash lift, advanced electrolysis blemish removal such as skin tags, age spots, milia, seborrheic keratosis.

Hot stone deep tissue massage, waxing, tinting, Jane Iredale mineral make-up and ANP skincare supplements

**Open Monday to Saturday**

**Free Private Parking**

**email: [jo@serenityatsibford.co.uk](mailto:jo@serenityatsibford.co.uk)**

**Please visit my website and use my online booking system**

**[www.serenityatsibford.co.uk](http://www.serenityatsibford.co.uk)**





EQUINE PRACTICE

Celebrating 50 Years of Care

- 24 Hour Emergency Call Out
- Free Zone Visit Scheme
- Dentistry & Vaccination
- Full Surgical Facilities (inc. Colic Surgery)
- Lameness Work-ups
- Medical Investigation
- Portable Endoscopes, X-ray & Ultrasound scanners
- AI services
- JMB Height Measurement
- Worm Egg Counts
- Laboratory Facilities

Ratley Lodge  
Ratley  
Banbury  
Oxfordshire OX15 6DT

Tel: 01295 670501  
[www.avonvaleequine.co.uk](http://www.avonvaleequine.co.uk)



MITSUBISHI  
MOTORS

Drive your Ambition

# The Firs Garage

[www.firs-garage.com](http://www.firs-garage.com)

Family business established 1960

Tel: 01608 737349 / 737641

Hook Norton, OX15 5DD

**ECLIPSE CROSS**



New Mitsubishi Eclipse Cross  
petrol SUV, designed to inspire

Extensive range of new  
and used economical cars,  
hybrids & 4x4's

Part exchange welcome

Service

MOT Parts

Bodyshop

Fuel Shop

**ALL MAKES  
SERVICING**  
COMPETITIVE PRICES

## **Tim Clarke Performance Coaching**

Fulfilling potential for adults and teenagers

30 years experience as a qualified  
coach/teacher

A Member of The Coaching Academy  
Life Coaching/Performance Coaching  
and Tuition for GCSE and A Level Maths  
Based near Banbury, DBS checked

Tel 07984 140 739

Email [clarke.tutoring@btinternet.com](mailto:clarke.tutoring@btinternet.com)

[www.clarketutoring.com](http://www.clarketutoring.com)

## **Shutford News Advertising Rates**

**Full page £15.00 per edition**

**Half page £10.00 per edition**

**Quarter page £5.00 per edition**

**Includes advert / link on village website:**

**[www.shutfordvillage.com](http://www.shutfordvillage.com)**

**Contact: [shutfordvillagenews@gmail.com](mailto:shutfordvillagenews@gmail.com)**



# **R. Wakelin Heating Services Ltd**

31 The Dairyground, Shutford, Oxon. OX15 6PN

Tel: 01295-788359 Mobile: 07810-754434

E-Mail: [ross@wakelinheatingsservices.co.uk](mailto:ross@wakelinheatingsservices.co.uk)

**Boiler Servicing / Repairs / Replacements**

**Gas and Oil**

**Domestic – Commercial**

**Gas Safe Registered Oftec Registered**

**(190421)**

**(C6644)**



## **Shutford Village Hall**

To hire for parties, christenings, celebrations etc.  
Full fitted kitchen, audio visual unit, stage, baby  
changing, disabled loos and entrance.

To enquire simply email [shutfordvh@gmail.com](mailto:shutfordvh@gmail.com)



Cotswold Marquees Ltd

**Whatever your event we can supply all you need!**

Frame and Traditional Marquees, Linings and Starcloth, Furniture,  
Dancefloor, heating, Lighting and Accessories



**Bespoke manufacture of canvas and PVC covers**

Camping Tents, Caravan Awnings, Boat and Trailer  
Cover: Zip repair/replacement, Kader replacement,  
patching or re-inforcing seams



**01608 686900**

[www.cotswoldmarquees.co.uk](http://www.cotswoldmarquees.co.uk) • [info@cotswoldmarquees.co.uk](mailto:info@cotswoldmarquees.co.uk)

Unit 9, Brailes Industrial Estate, Lower Brailes, OX15 5JW



## THE BAG 'N' BOX MAN

- Bags & Boxes
- Bubble Wrap & Loose Fill
- Corrugated Rolls
- Bin Bags
- Centre Feed Rolls
- Hand Towels & Toilet Rolls
- Lay Flat Tubing
- Bubble & Mailite Bags
- Tapes & Dispensers
- Kraft & Tissue Papers
- Pallet Wrap & Pallet Covers
- Gripseal Bags
- Foil, Clingfilm & Parchment
- Napkins
- Catering Gloves
- + Lots more!

**No Minimum Order Value!**

Visit our comprehensive and easy to navigate website  
where you will find thousands of items. Otherwise give  
our friendly sales staff a call.





**Tel: 01295 788522**

**Fax: 01295 788523**

**Email: [sales@bagnboxman.co.uk](mailto:sales@bagnboxman.co.uk)**


**[www.bagnboxman.co.uk](http://www.bagnboxman.co.uk)**

Formerly - C Young (Wrappings) Ltd



GoodGarageScheme.com

Vehicles Collected And  
Delivered Within A 10 Mile Radius



**S.K. Auto Repairs**

SERVICE • REPAIRS • TYRES • MOT TESTING  
VISIT US AT THE GOOD GARAGE SCHEME  
OPEN 6 DAYS A WEEK

Unit 6, Manor Farm Buildings, Mollington Lane  
Shotteswell, Banbury, Oxfordshire OX17 1HZ

**Telephone: 01295 738300**  
**www.skautorepairs.co.uk**

**PLT**  **PLUMBING**

**MILCOMBE, BANBURY**

*FOR ALL YOUR DOMESTIC PLUMBING*

FULLY QUALIFIED ENGINEER

**T: 01295 368150 M: 0742 5982855**

**E-mail: info@pltplumbing.co.uk**

# HUNT BESPOKE KITCHENS & INTERIORS



High St, Bloxham, OX15 4LT

[www.huntbespokekitchens.com](http://www.huntbespokekitchens.com) | 01295 721111

We are also active on Facebook and Instagram



**MAIL BOXES ETC.**

For all your business  
& home office needs

- PARCEL SHIPPING via UPS, FedEx, TNT, DHL & Parcelforce
- SAME DAY COURIER SERVICE to anywhere in mainland UK
- DIGITAL PRINT AND COPY SERVICE
- DOCUMENT SERVICES including finishing, laminating and binding
- MAIL BOX RENTAL - at Banbury's most prestigious business address

FIND US IN THE SHADOW OF BANBURY CROSS, AT  
29 - 30 HORSE FAIR, BANBURY OX16 0BW

t: 01295 277733 • f: 01295 277763 •  
e: [info@mbebanbury.co.uk](mailto:info@mbebanbury.co.uk) [www.mbebanbury.co.uk](http://www.mbebanbury.co.uk)



**We offer safe affordable counselling  
by fully qualified therapists. For your  
FREE ASSESSMENT phone  
01295 231320 or visit our website:  
[www.banburytherapycentre.com](http://www.banburytherapycentre.com)  
for more information**





# Diary

<b>June</b>		
Tuesday	4	WI Meeting 10:00 am
Thursday	6	Meet & Eat, Village Hall, 12:30-2pm (weekly)
Saturday	15	Messy Church, Village Hall, 4:00pm-6:00 pm
<b>Saturday</b>	<b>22</b>	<b>Shutford Summer Festival 1-10:30pm</b>
Sunday	23	Kids Film Club, Village Hall 2:00 pm
Monday	24	Book Club, Village Hall, 7:30 pm
Tuesday	25	Art Club, Village Hall 7:30 pm
Wednesday	26	Shutford Film Club, 7:30 pm
Sunday	30	Breakfast, Village Hall, 9:30-11:00am
<b>July</b>		
Wednesday	3	WI Outing: 3:00-5:00 pm
Thursday	4	Meet & Eat, Village Hall, 12:30-2pm (weekly)
Tuesday	9	PCC Meeting, Village Hall 7:30 pm
Saturday	27	Film Club, Village Hall, 7:30 pm
Sunday	28	Breakfast, Village Hall 9:30-11:00 am
Monday	29	Book Club, Village Hall 7:30 pm
Tuesday	30	Art Group, Village Hall 7:30 pm
		<b>For full details of activities in the village hall, please see village website</b>
<p><b>The 'Shutford News' Team - Editor: Rita Livesey</b>  <b>Editorial Team:</b> Margaret Holloway  <b>Advertising &amp; Accounts:</b> Rita Livesey  <b>Distribution:</b> Pam &amp; Di  <b>Printing:</b> Mail Boxes Etc, Banbury</p>		
<p>The next planning meeting will be on  Tuesday 2 July @ 7:00 pm in The George&amp;Dragon  <b>DEADLINE FOR OUR NEXT ISSUE:</b> Saturday 13 July, 2019  Email: shutfordvillagenews@gmail.com  <b>Please note dates are correct at the time of going to print.</b>  Please visit <a href="http://www.shutfordvillage.com">www.shutfordvillage.com</a> for up to date  <b>information.</b></p>		



# Heaven and Stubbs



- Bespoke furniture of the highest quality and specification
- Long established with high levels of recommendations
- Youtube video testimonials
- 46 X Houzz 5 star reviews



t: 01295 812 423 e: [info@heavenandstubbs.com](mailto:info@heavenandstubbs.com) w: [heavenandstubbs.com](http://heavenandstubbs.com)



**Showroom:**

**Unit 16 Twyford Mill, Adderbury, Oxfordshire OX17 3SX.**

*(Please call prior to making your journey)*





Website: [www.thegeorgeanddragon.com](http://www.thegeorgeanddragon.com)  
Email: [info@thegeorgeanddragon.com](mailto:info@thegeorgeanddragon.com) Phone: 01295 780320

Quiz has ended for the summer and will be back in the Autumn.

Saturday 8<sup>th</sup> June 8pm – Live music from **Pete Watkins**

Saturday 29<sup>th</sup> June 8pm – Live classic rock music from **The Artichokes**

Saturday 20<sup>th</sup> July – **80's party and karaoke! Dress to impress!**

Sunday 25<sup>th</sup> August 8pm – Live music from **The Peas!**

Saturday 25<sup>th</sup> – Monday 27<sup>th</sup> August – Bank holiday  
Bank holiday weekends mean **GINFEST!!** Buy 3 get 1 free.  
over  
30 gins to choose from!

### Food

**Curry night** – First Tuesday of the month, next on Tuesday 4<sup>th</sup> June and Tuesday 2<sup>nd</sup> July. Booking advised.

**Pizza Pizza!!!** – delicious pizza, lots of toppings! **Every weekend!**

Food served 12-2:15 and 5-8 Mon, Tues, Thur, Fri and 12-8 at weekends.

**Part-time cook needed**, no experience needed as full training will be given however enjoyment in cooking is key. Please get in touch with Juliette if interested.

Please keep an eye on the website for new events.