


SHUTFORD NEWS

Issue No. 224


March / April 2019



MAY MADNESS
Village Family Day

Monday 6th May 2-5pm
Children's Treasure Hunt
registration 2.00pm (village hall)

PRIZES TO BE WON!
FACE PAINTING, GAMES, LUCKY DIP,
TEAS & TREATS AT THE VILLAGE HALL



All funds raised
will go towards new
playground equipment



Easter Egg Competition **Monday 22nd April, 2pm** **Shutford Village Hall**

There will be two categories:

Best Decorated Egg

Best Concept Egg

Prizes will be awarded to the Winners in the following age groups:-

Under 7 years

7 - 10 years

11 - 15 years

Adults 16 and Over

Then there will be refreshments afterwards in
The George & Dragon.

Remember the Judge's decision is final.



www.shutfordvillage.com

Onion, Olive and Tomato Tart

Ingredients

1 tbsp olive oil
3 large onions, sliced
1 tsp caster sugar
handful oregano leaves, roughly chopped
320g cherry vine tomatoes
50g pitted dry black olives
1 tsp nigella seeds
1 egg, lightly beaten
1 x 375g pack ready-rolled puff pastry



Method

Heat the oil in a large saucepan. Fry the onions, sugar, oregano and a pinch of salt over a medium heat for 25 mins, stirring occasionally, until golden. Take off the heat. Stir in the tomatoes and olives. Cool.

Preheat oven to 220°C, and slide in a large baking tray.

Unroll the pastry onto a large sheet of baking paper. Using a sharp knife, score a 1-1.5cm border around the edge of the pastry, taking care not to cut all the way through. Brush a little of the beaten egg on the border to glaze it. Scatter over the nigella seeds and set aside.

Pile the onion mixture into the centre of the pastry, taking care to avoid the border. Remove the hot baking tray and slide on the baking paper. Bake for about 25-30 mins until golden and crisp.

Rest for about 10 mins, then slice and serve.

Profits raised to date from the sale of the Village Hall Recipe books have been distributed as follows:

£40 to the Village Hall

£40 to the church

£10 to Katharine House Hospice

There are a few copies left, makes a great present, please contact Helen on helennixseaman@gmail.com

Dear Villagers...

Thank you to those who submitted a Shutford Flag design and to everyone who voted. As the Shutford News was going to print at the time of the voting, the winner will be announced via the village emails and also you can go onto the website to view the winning flag after 31 March: www.shutfordvillage.com



We are starting to pull together plans for this year's festival, more details to follow in the next edition. If you have an idea for a stall, please do get in touch by emailing: shutfordvillagenews@gmail.com. We will of course be in touch during April/May re plans and where we need our festival helpers. Finally, a big thank you to Jane King who has been amazing in re-designing our festival poster and logo. It looks super!

Remember to keep up with all the village news simply sign up to our newsletter by visiting www.shutfordvillage.com and completing the on-line sign up form to receive village news.

Looking forward to keeping you in touch with news and events throughout the year!

A handwritten signature in cursive script that reads "Rita".

Rita Livesey, Editor

Email: shutfordvillagenews@gmail.com

Shutford Calendar 2020

Please send your village photos to: shutfordvillagenews@gmail.com
Photos ideally need to be landscape and in hi-res jpeg / png format. Last date to receive photos is 31 October 2019.

SHUTFORD VILLAGE HALL

100+ CLUB RESULTS

FEBRUARY	£35.00	£15.00	£10.00
	John Hodgkins	Paul Hughes	Rosemary Neal

MARCH	£55.00	£15.00	£10.00
	Miles Ash	Marion McClellan	Martin Norrington

The next draw starting the new membership year will be on Thursday
4th April at the Community Lunch in the Village Hall.

ANNUAL REPORT 2018/19

The income for 2018/19 was a total of £1,580 from 158 members. This income is split with £790 going to prize money and £790 to the running of the village hall.

The first prizes were £55 for Sept and March, £50 for June and Dec and £35 for the remaining months. We were able to increase the 2nd and 3rd prize money by £5 monthly. Winners are published each month on the village notice boards and in the Shutford News editions.

There were no expenses during this period due to the generosity of Mail Boxes Etc. who printed the membership cards for free.

Since 1998, Members have raised an amazing total of £14,432.49 for the village hall

Many thanks to everyone who is a member and helped to raise funds for our fantastic village hall.

GOOD LUCK TO EVERYONE!



The next dates for a Sunday breakfast in the Village Hall
served from 9:30 - 11:00 am:

Sunday 28 April
Sunday 26 May

We are looking for volunteers for July & August:

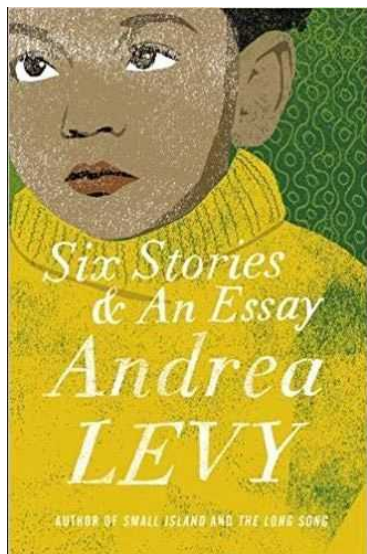
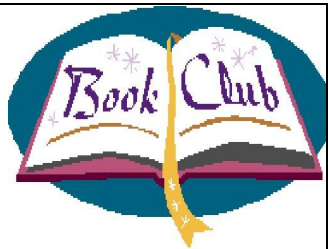
Are you handy at doing a breakfast?
Or happy just to help serve and tidy up?

Simply email: shutfordvillagenews@gmail.com or pop along to one of the
breakfast dates above and leave your details.

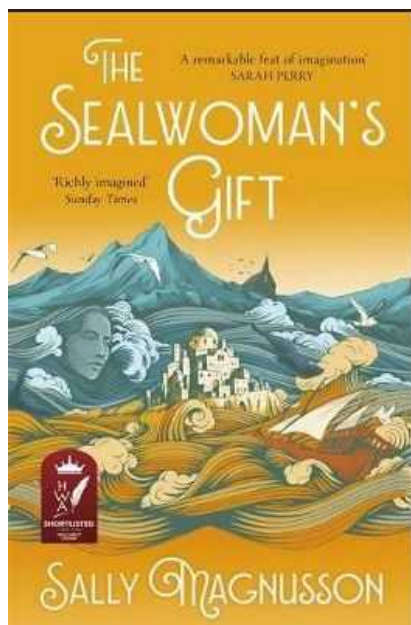
Thank you.

Shutford Book Club

The Shutford Book Club meets on the last Monday of each month in Shutford Village Hall 7:30 pm.



April 29th, *Six Stories and an Essay* by Andrea Levy, hosted by Wendy Hall

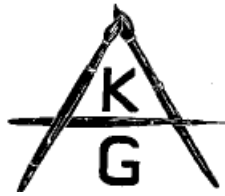


May 27th, *The Sealwoman's Gift* by Sally Magnusson, hosted by Christine Yarborough

Currently the book club is full, however, you can always take part virtually. The books we are reading are regularly published in the Shutford News and on the village website, so feel free to read them alongside the Book Club. You can volunteer your thoughts via email to Kirsten Parrish or a note in the door of "The Nook" in Church Lane if you would like to, and we'll share them at the meetings!

Contact details:

Kirsten Parrish: Kirsten@kdpr.co.uk or 780412



Kineton Art Group

Open Exhibition

Kineton Village Hall, CV35 0LB

Saturday 11th and Sunday 12th May 2019

10 a.m. to 5 p.m.

Sale of Paintings and original cards

Refreshments Entry 50p

Raffle Children free

(www.kinetonartgroup.com)

Art & Craft Workshop Programme

Hornton artist, Chris Woodcock, has launched an art and craft workshop programme at her home studio in Hornton, offering friendly tuition by Banburyshire experts in skills ranging from photography to printing.



4 April 2-4:30 pm: Easter Card Making led by Sally Moret

For each of your designs, we will provide card (plain pastel colours and patterned) and envelopes as well as silhouettes, motifs and decorative embellishments. You take away as many cards as you can design and make in the time!

9 April 10-3:30 pm: Fabric Bunting Making led by Jane Moffatt.

Make some beautiful bunting for your home, garden or party - or as a special personalised gift! In our relaxed, light garden studio setting, Jane will guide you, step by step, through planning your project, selecting your fabrics, assembling and sewing.



For more information and the full programme - plus a mini series of art history talks - contact Chris.

Email: chrisawoodcock@btinternet.com

Tel: 01295 670795

HOOK NORTON BREWERY

AWARD WINNING ALES AND MORE

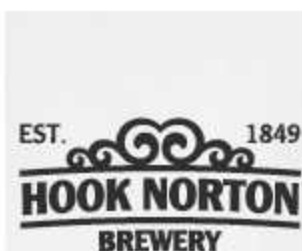
OPEN TAP EVERY 2ND WEDNESDAY OF EACH MONTH — **FREE BEER TASTING & MEET THE BREWER!**



OPEN

MONDAY - SATURDAY
9.00am - 5.00pm

SUNDAY
10.00am - 4.00pm

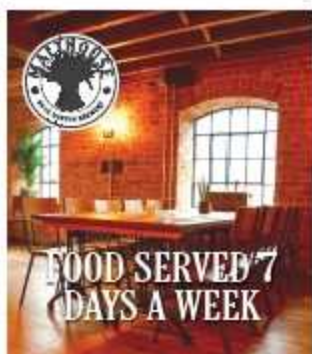


**TO BOOK A
BREWERY TOUR**

CALL:
01608 730384

EMAIL:
BREWERY@HOOKY.CO.UK

ONLINE:
WWW.HOOKY.CO.UK/BOOK



T: 01608 730384 E: vc@hooky.co.uk W: www.hooky.co.uk

Hook Norton Brewery, Brewery Lane, Hook Norton, Banbury, Oxfordshire, OX15 5NY

CHURCH NEWS

Rector - Revd Ronald Hawkes - 780555

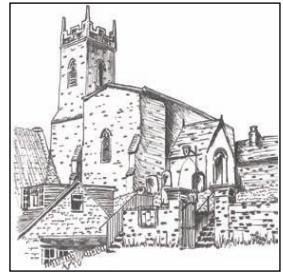
Church Wardens:

Mr Ken Jeffs – 788308

Mr John Hodgkins - 788609

SERVICES: Most Sundays 9.30am but see Wykeham

News & Benefice website for details



The PCC met on 5th February to prepare for the church Annual Meeting in March. Items on the agenda included the annual report and accounts, benefice activities, Lent talks and lunches, fund raising and the Deanery plan which will decide the future of ministry in Banbury and surrounding villages. The Diocese of Oxford is developing a common vision – to become a more Christ-like church, more contemplative, compassionate and courageous, a local plan will include this vision.

We were pleased to welcome Lucia Rigby as a member of the church as she was baptised on 10th February. She was well supported by her family and friends. The church tower was illuminated to celebrate the occasion. See elsewhere in this publication for other illuminations.

The Community Lunch on 28th February was hosted by church members and £85 was raised for St Martin's Church. There were 16 people for lunch: we are grateful to them for attending and those who donated, prepared and served the food. These lunches, usually organised by a village hall team, are open to everyone and are an ideal time to meet, eat and chat: good company and food guaranteed. The next church hosted lunch will be on Monday, 15th April raising funds for Katharine House Hospice. This Lent Lunch will be a bit more frugal than usual with soup, bread, cheese, cake and buns on the menu.

45 people celebrated communion in St Martin's Church on 3rd March with the benefice choir in attendance. Reverend Ronald led worship with excellent hymns, address and refreshments to finish.

The Oxford Diocese has published a new quarterly magazine, Pathways, which replaces The Door monthly newspaper.

Copies have been distributed to our core congregation but there are some available in church. The first magazine has an introduction from Steven, Bishop of Oxford with articles about everyday faith, human sexuality, ways to reduce carbon footprint, church schools and prayer.....

God of Compassion, you meant us to be both fragile and ordinary. Silence the voices that say we are not good enough, haven't achieved enough, haven't enough to show for our lives, that we are not enough. Help us to know that we are treasure, we are prized, we are cherished, we are loved. Infinitely. By you.

So be with us in our corrugations of feeling: When our hearts are in downward freefall, be with us when our minds race with anxiety, be with us when our throats close in fear, be with us when sleep will not come, be with us when waking hurts, be with us. Amen.

Churches can play an important role for those experiencing distress or mental ill health: for resources visit inclusive-church.org/mental-health.

The annual church meeting took place on 19th March. John Hodgkins and Ken Jeffs were re-elected as churchwardens for the coming year. The annual report and accounts for 2018 were adopted – copies are held in the church and will be available on the village website for all to see. There were only 7 people at the meeting and existing members of the church council were re-elected. Church finances are in a positive state with the core congregation covering the cost of ministry, which in 2018 was £8566. Fund raising, donations, collections and £3500 from the Shutford Festival covered other costs which totalled £6183. The core congregation is small, about 25 of whom 15 worship once a month, some come to church for special occasions and others support our outreach to the community through social and other initiatives. To ensure the survival of a church community in Shutford we need younger villagers and families to become part of it.

We have 4 Messy Church Events in 2018 in Shutford Village Hall to encourage some involvement with younger children and less formal worship is held monthly. The church is a village asset, please use it or lose it: people of all denominations or none are welcome in church.

Contact KJJ@kennyjohn.co.uk or visit the church website and notice boards for event and service information.

Illuminate & Celebrate in 2019!



Don't forget to get your special dates in for 2019!

If you have a special celebration, maybe a birthday coming up, or a loved one you would like to remember, a christening or some other occasion in 2019.

How special it would be for the church tower to be illuminated for this occasion for a donation of only £10. Please get in touch with Ken Jeffs on KJJ@kennyjohn.co.uk.

Below is a list of those who have been or will be remembering a special day:

Date	Name	Occasion
10 th February	Jamie & Claire Rigby	Lucia's Baptism
1 st March	Anon	St David's Day
4 th March	John Bailey	to dear Henry
16 th March	Debbie Pitt	Fin's 5 th Birthday
26 th March	Rita Livesey	In memory of Mum
27 th March	Linda Gunn	Wedding Anniversary
23 rd April	Ken Jeffs	St George's Day

Any donations received after deadline will be mentioned in the next SN issue: where more than one donation is received for a specific day, illuminations will take place on following days.

SHUTFORD WI

Our February meeting took the form of a Mosaics Workshop with Jane Wimbury. Members created a coaster on a square base, with 100 small ceramic squares of various colours, to their own design. A bag of grout with written instructions on its use was given to each member to apply later when the coaster had dried.

In March, we held our AGM when the presentations of the Annual Report and Financial Statement were followed by the election of the committee and President. Duties for the next year were also agreed. Voting for the Board of Trustees for the NFWI & OFWI were carried out. A venue for our annual outing was discussed.

In April, several members will be attending a Group meeting hosted by Bloxham WI when we will learn about 'The History of Punch & Judy'

Visitors will be made very welcome at any of our forthcoming meetings, held in Shutford Village Hall on Tuesdays at 10am, when our future speakers will be:

April 2 nd	Mike Payne - History of Pinewood Studios
May 7 th	Resolutions Meeting (no speaker)
June 4 th	Julia Miles - Ragbag and Cocktail

For further information on our WI, please contact Geraldine on 780579 or Jenny on 780570



Shutford Parish Council Meeting

Wednesday 13th March at 7.30pm in Shutford Village Hall

The meeting commenced at 7.30pm

Present: Cllrs Debbie Pitt, Helen Nixseaman, Ashley Taylor, Carolyn Rann, George Reynolds, Sandy Forrester and David Best, Parish Clerk. Also present were 2 members of the public.

Apologies for absence: Cllr Tom Parrish

18/064	Declarations of Interest: None.
18/065	Minutes of the last meeting: It was RESOLVED that the minutes of the meetings held on 9 th January were a correct record and signed. Proposed by Cllr Carolyn Rann, Seconded by Cllr Ashley Taylor.
18/066	Matters arising from the minutes: Actions List – The actions list was reviewed. Who collects scrap metal still needs to be finalised. Oxfordshire County Council have not yet pruned the Ash tree in Church Lane and Cherwell District Council has not yet replaced the faded road signs. The Clerk will chase these items. The actions list will be published on the website.
18/067 18/067/1 18/067/2 18/067/3 18/067/4 18/067/5 18/067/6 18/067/7 18/067/8	Parish Matters: Allotment Agreement – The new draft agreement was reviewed and after some minor changes it was RESOLVED to adopt it. This was proposed by Cllr Ashley Taylor and seconded by Cllr Debbie Pitt. Allotment Rents – the proposed new rents were reviewed and it was RESOLVED to implement the larger of the two proposed increases. This will generate extra revenue of £135 per year if all plots are rented. This will be reinvested in the allotments. Allotment holders had previously agreed to an increase in the allotment holder's meetings. This was proposed by Cllr Carolyn Rann and seconded by Cllr Sandy Forrester. Dairyground Status – the following were reported and discussed: <ol style="list-style-type: none"> 1. A parishioner had expressed concern at the playground fundraising. Other neighbouring Parish Councils have sought funding for playground repair and development and in was RESOLVED unanimously that fundraising was appropriate and would continue. 2. A working group has prepared the area for the replacement swings (phase1) and the order has been placed with the supplier, T Stewart. 3. Plan of playground changes – It was agreed that a plan of the proposed changes should be published to Shutford residents. The supplier will be asked if they can supply this. 4. Fundraising – Funding has been received from The National Lottery and an application has been made to Cherwell District Council, Tesco, Waitrose, Calor and a number of other companies. 5. Family Fun Day – This is planned for the 6th May (Bank Holiday) and will include a treasure hunt. This is to raise money from Shutford residents. Mailing List – It was RESOLVED that the Parish Council will invite Shutford residents to be included in a mailing list. This will be separate to the existing mailing list as the Parish Council has different information to share with residents. Proposed Cllr Helen Nixseaman, seconded Cllr Sandy Forrester. Minute Recording – It was RESOLVED to discontinue recording minutes in the existing book. Proposed Cllr Debbie Pitt, seconded Cllr Helen Nixseaman. It was agreed that the minutes will be printed on good quality paper and bound every year or 5 years. Village Clear Up – The date set for this is Sunday 7 th April. The Parish Council wishes to formerly record thanks to Ken Jeffs and other residents who pick up litter. Flag Pole – It was agreed that this would be added to the Parish Council Asset List. The Village Hall co-ordinates flying flags. Bus Service – The Parish Council would like to thank Mervyn Benford for all his hard work trying to get a bus service reinstated. A proposed timetable has been received but the service has not yet been confirmed.
18/068	Finance: Statement of Receipts and Payments and Bank reconciliation – These were reviewed. The documents can be viewed at http://www.shutfordvillage.com/parish-council-meetings

Shutford Parish Council Meeting
Wednesday 13th March at 7.30pm in Shutford Village Hall

18/069	Correspondence: None. All emails were forwarded to the Councillors.
18/070	Planning: There have been no planning applications since the last meeting and there are no outstanding applications awaiting approval.
18/071 18/071/1 18/071/2 18/071/3 18/071/4	Any Other Business: Malthouse Lane Road Surface – The road surface of Malthouse Lane is very poor and it is considered dangerous for pedestrians. The Clerk will ask Oxfordshire County Council to rectify it. Defibrillator Pads – These will require replacing soon. Cllr Ashley Taylor will enquire with the supplier. Dairyground Noticeboard – This and the posts require repainting. This will be done when the weather improves. Jame Corner Posts – These will also be repainted when the weather improves.

The Annual Parish Meeting will be held on Wednesday 8th May 2019 at 7.00pm in the Village Hall
The next Parish Council Meeting will be held after the Annual Parish Meeting.

There being no other business, the meeting closed at 8.40 pm

Signed by Chairman..... Date.....

Minutes are marked as draft until the Parish Council agrees that they are a correct record at the next meeting.

Did you know?

The **Parish Council** now has its own email mailing list. The reason for this is that there is a variety of information that isn't necessarily Shutford village related but that we feel you might be interested in.

Things such as Thames Valley crime alerts, road closures, Oxfordshire County Council information and surveys, as well as Shutford Parish Council business including agendas, minutes of meetings, finances and general information that we feel that parishioners have a right to know.

We will not flood you with everything that comes to Councillors but just information that is relevant to residents! If you would like to be on this new email mailing list, please email shutfordpc@gmail.com. We will, of course, not pass your details onto anyone else and will send you a form to comply with the new general data protection act.

Johnson's coaches were approached about the loss of our bus service. Johnson's bus manager was very understanding and has worked really hard in official negotiations with Warwickshire County Council who subsidise these services for their citizens. In his commitment to us he has shifted one back to Shutford/North Newington. We suggested the timing could connect with the bus to Gateway trading estate, but he has done better than that by routing our bus onto Gateway after town centre.

One persuasive argument was a growing difficulty using cars in Banbury. It seems very important now to use the service as much as possible- even if we still drive now and again. Both Balscote and Epwell lost services when Oxfordshire stopped subsidies but could catch a bus from Shutford.

The proposed timetable gives similar time (midday) in Banbury as before but on Saturdays and WCC school holidays there is a later bus back. There are also buses to Banbury or Stratford that would be one-way but may help in some situations - station, or with lifts the other way. The No.7 service still serves Wroxton so again one-way possibilities with lifts. It begins **Monday June 3rd (times to be confirmed)**

Let's make it economically worthwhile for Johnson's or the service might go again. The **Parish Council** would like to thank **Mervyn Benford** for his help in contacting Johnsons, with our authority, and his persistence and patience in seeing it through when many would have given up a long time ago.

A new playground is coming to Shutford...

Following the recent survey results we are delighted to announce that work has already begun on replacing the swings on the Dairyground and by the time you read this probably the work will be completed.

This work has been funded by Shutford Parish Council.
(pictured opposite are Ashley, David & Gordon who helped with the initial works)



In addition, and again following the results of the survey where the majority were in favour of more new equipment and picnic tables, the Parish Council has raised an amazing £10k from the lottery with applications pending for a further £15k.

If all applications are successful, we only need another £5k. We are therefore running a series of fund raising activities and need your help to get this extra funding.

The working group have set-up a funding platform for you to donate, simply copy and paste this link to donate:

<https://www.gofundme.com/shutford-village-playground/donate>

Please dig deep and help us raise this extra few pounds. Thank you

Shutford Parish Council



FELDON VALLEY

Relaxed Restaurant & Bar at Feldon Valley now open for bookings – only 7 miles from Shutford!

Join us for Sunday Lunch, order from the Bar Menu daily, enjoy the stunning balcony views or book dinner from April – Everyone is welcome.

Our golf course is looking fantastic and with a 25 bedroom hotel due for launch in May we hope to create a real destination for the local communities.

We also have a small gym with memberships available at £20 per month for the first 50 members.

Visit our website at www.feldonvalley.co.uk

Call us on 01608 685 633

Email us on david@feldonvalley.co.uk

Community – Nature - Cotswolds



Easter Egg Competition Monday 22nd April, 2pm Shutford Village Hall

There will be two categories:

Best Decorated Egg
Best Concept Egg

Prizes will be awarded to the Winners in the following age groups:-

Under 7 years
7 - 10 years
11 - 15 years
Adults 16 and Over

Then there will be refreshments afterwards in
The George & Dragon.

Remember the Judge's decision is final.





We are delighted to present the **Shutford Kids Film Club** in the village hall. Next film is...



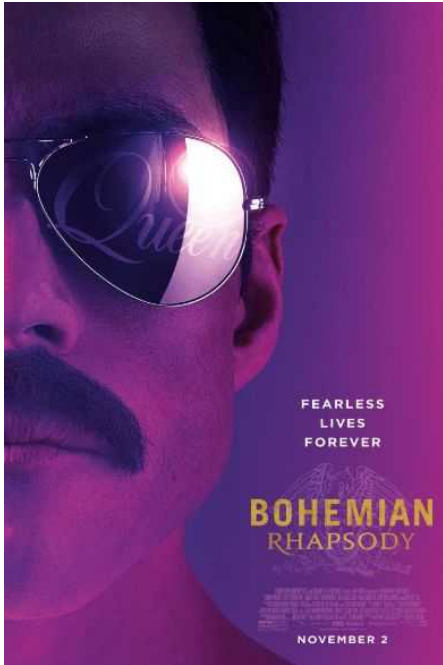
**Sunday
28 April
Doors open
at 2:30 pm**

**Membership for a calendar year
(October 2018 – September 2019).
Films are every 6 weeks. Membership costs £5.00.
Popcorn & ice cream available on the day.
Contact Zoe: wellszoe@hotmail.com**

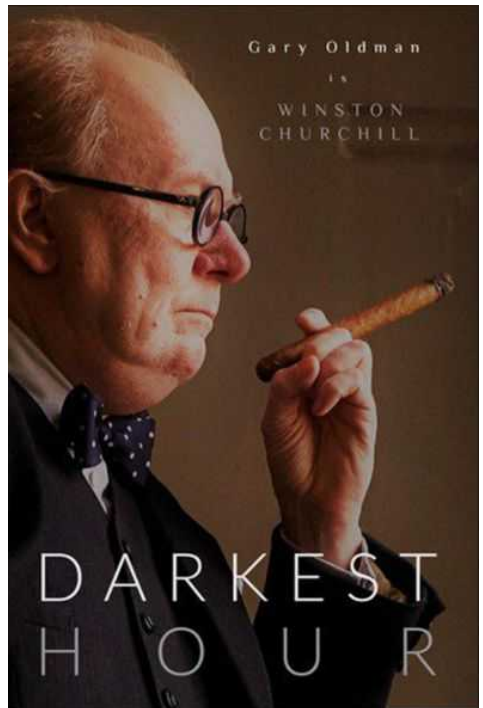


Shutford Village Hall

Doors open 7:00 pm / Film starts 7:30pm



Wednesday, 24 April
"Bohemian Rhapsody"



Saturday, 25 May
"Darkest Hour"

Membership (calendar year September 2018 – August 2019)
only costs £12.00 for adults and £6.00 young adults (12-18).

Broughton Castle



2 Adult Admissions to the Castle for £15

**(Please bring this page with you)
ends 30th September 2019**

The house, gardens, tearoom and shop are open to the public from 2-5pm from 1st April to 30th September on Wednesdays, Sundays and Bank Holiday Mondays.

Groups welcome by appointment, throughout the year.

Tel: 01295 276070

Website: www.broughtoncastle.co.uk



As part of the 'Keep Britain Tidy' campaign the Parish Council will be holding its annual Spring Clean on

Sunday 7 April to Spring clean the village!

Meet at **10:00 am at the bus shelter** and we will go off in groups.

If you are able to spare an hour then please do come along and help out, we really do need volunteers so this is your opportunity to keep your village looking 'spic and span'.

Gloves, bags, hi-viz jackets and litter pickers are provided, if you don't have your own.





Featuring, this year....

Shutford's Interesting & Classic Vehicle Event for all types of enthusiast.

Those owning or interested in *cars, tractors,*
stationary engines, motor cycles, farm implements
and machinery, the list is endless "Bring it along."

Tell your friends to come along and bring their pride and joy.

This is your personal invitation to "Bring it along."

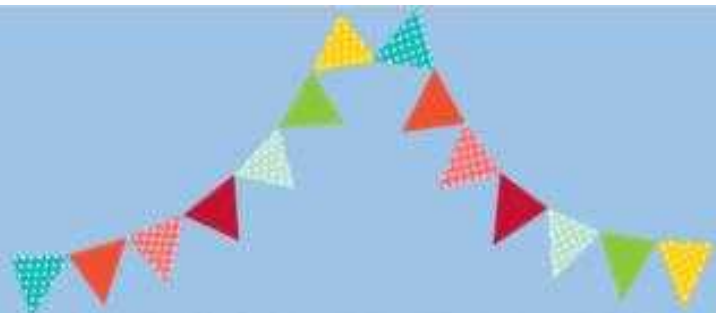


The first **50 arrivals** will receive a Rally Plaque
(Please try to arrive before the start @ 13:00)

Sponsored by: **S.K. Auto Repairs**

No need to register, just turn up! If you have any questions,
please contact Bill: crew@marymo.me

www.shutfordvillage.com



MAY MADNESS

Village Family Day

Monday 6th May 2-5pm
Children's Treasure Hunt
registration 2.00pm (village hall)

PRIZES TO BE WON!

FACE PAINTING, GAMES, LUCKY DIP,
TEAS & TREATS AT THE VILLAGE HALL

All funds raised
will go towards new
playground equipment



Adapting to a Warmer Climate - #Fridays for Future

This February was the warmest since records began. England, Scotland and Wales all recorded the warmest February day as well as the warmest winter day. In London at Kew Gardens, 21.2C was recorded on 26th February – which is also now the UK record.

Unseasonably warm weather feels good on one level but on another it's disturbing - we know it shouldn't be happening. The climate is changing faster than predicted and the Met Office records show that, in the UK, the top 10 warmest years on record have all occurred since 2002. Warming air temperature may not seem like such a problem but along with warming sea temperature it causes turbulence in world wide weather systems that leads to local extreme weather events - extreme cold spells, rainfall and flooding as well as extreme heat and drought.



Photograph: Dennis van de Water

In the past few years warmer winters that have often been followed by a freezing cold start to spring. This year the weather in February was unprecedented and could cause a crisis for wildlife. Warm weather in winter encourages some birds to nest early but if it's followed by extremely cold spring months they can get caught out and struggle to find enough food for themselves and their young. The same applies for butterflies, bees and other insects that come out of hibernation too early, sudden cold weather can kill off early flowering plants which are a source of nectar and an exceptionally cold spring like that in 2018 makes it hard for emerging hedgehogs to survive.

Some species are able to adapt to the early arrival of spring. In Wytham Woods in Oxford, a great tit study has been running since 1947 making it one of the longest single species studies in the world. Wytham Woods is an ancient woodland, dating back to the last Ice Age, and one of the most researched woodland areas in the world. For more than 70 years scientists have been studying the behaviour and breeding biology of great tits, using Wytham Woods as an ecological laboratory. Their research data shows that great tits are able to control the timing of egg laying to coincide with emerging oak tree buds so that chicks hatch at the same time as their favourite food – the Winter moth caterpillars that feed on oak leaves. Chicks need thousands of caterpillars in the few weeks that it takes for them to fledge so if early spring weather turns very cold and wet, caterpillars won't survive and neither will the chicks.

Scientists agree that the average global temperature has increased by around 1°C. In 2009, the year of the Copenhagen Climate Summit, the figure was .8°C. So the climate has warmed .2°C on average in the past decade. If it continues to warm at that rate we could reach 1.5°C by around 2050. That is the limit that the Intergovernmental Panel on Climate Change (IPCC) has calculated we need to sustain to avoid catastrophic weather events and sea level rise that climate breakdown will cause.

The IPCC also says we have until 2030 to make the changes necessary to achieve that limit. Many scientists think this is within our grasp if Governments act urgently and treat climate breakdown as the crisis that it is by implementing bold strategies such as radically changing our transport, energy and food producing systems and developing carbon capture technology.

It might be that the force required to make change happen can be generated by our children. On August 20th 2018 a 15 year old Swedish school girl went on strike from school and sat outside the Swedish Parliament with a few homemade flyers and a painted sign saying 'school strike for climate'. She continued her strike every day until Sweden's general election on September 9th, demanding that the Swedish government reduce carbon emissions in accordance with the Paris Climate Agreement. Since then she has continued to strike, every Friday, gaining worldwide media attention and inspiring a global network of student School Strikes - using the social media tag #FridaysForFuture.



Students on the march in Oxford

In December 2018 Greta was invited to speak at the latest UN climate conference, COP24 in Poland, and the World Economic Forum 2019 in Davos where she told forum delegates:

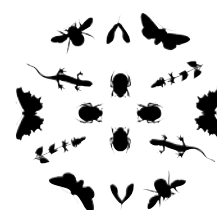
"Some people, some companies, some decision makers in particular, have known exactly what priceless values they have been sacrificing to continue making unimaginable amounts of money. I think many of you here today belong to that group of people."



The second mass School Strike for Climate event took place on Friday 15th March with an estimated 1.6 million people taking part, at 2000 events in 125 countries across the globe, including thousands in Oxford.

See UK Student Climate Network for more details:
<https://ukscn.org>

Jane King for Shutford Nature Hub



Shutford Nature Hub

[REDACTED]

The Swalcliffe Concerts present

Purcell's *Polyphonic* Party

in concert

Sat 6th April
Swalcliffe Church

7:30pm

BAR doors
open 6:45



tickets from
www.swalcliffe.org
or from the Box office
01295 788127

"astonishingly good"

a Nordic sympathetic folk baroque experience **£14**

APLINS

YOUR LOCAL SOLICITORS

Traditional standards
with a modern approach

- **House Sales & Purchases**
 - **Divorce, Separation
and Children issues**
- **Wills, Probate & Lasting Powers of
Attorney**
- **Trusts & Inheritance Tax Planning**
 - **Commercial Property**

36 West Bar
Banbury
OX16 9RU
www.aplins.co.uk

(01295) 251234

ACTIVE CONNEXIONS

'Truly personal computer support, making IT work - for you!'

Home and Small Business Computer Services

Support for PCs and MACs

Repair and supply of laptop and desktop systems

Wireless and wired networks installed and maintained

Broadband connections configured

Home and Small Office telephone systems supplied and maintained

Call Derek Brotherston – 01608 730989

Or email – enquiries@activeconnexions.co.uk

Supporting clients in North Oxfordshire since 2001

www.activeconnexions.co.uk



COUNTY Oil Tank SOLUTIONS

— The Oil and Water Tank Specialist —

- Free Tank Surveys
- Domestic & Commercial Tank Replacements
- Tank Servicing & Tank Disposals
- AGA & Rayburn Servicing
- GAUGES - supplied and fitted
- Hire Tanks
- Locally based in OX7

**24 Hour
Emergency Call Out**
for Failed or Leaking
Oil Tanks and
Pipework

Call us on 07799 643455 for ALL your tank needs

Email: james@countyoiltanksolutions.com

Website: www.countyoiltanksolutions.com

OFTEC REGISTERED

RYCOTE GARDEN MACHINERY



Lawnmower and Garden Tractor

Repair • Service • Sales

Mobile • We Come To You

On-Site • Free Quotes

New and Used Mower sales • Trade-In

07396 369534 • 01327 437921

rycotegardenmachinery@outlook.com

rycote.wixsite.com/garden



Cedar Therapy

luxury beauty salons



Treat yourself
to a Guinot
Aromatic Facial at
Cedar Therapy

The Aromatic Facial is a 45-minute soothing treatment that combines an essential oil blend personalised for each skin type, a relaxing massage to hydrate, balance and energise the skin, and a plant-concentrate enriched mask to restore radiance and reduce wrinkles.

Cedar Therapy is a collection of luxury beauty salons based in Chipping Norton, Bloxham and Deddington. Our carefully selected team of professional therapists will be on hand to advise you on all things skincare and beauty.

Try for £35 throughout April RRP £50



Cedar Therapy
luxury beauty salons

Online bookings available at
cedartherapy.com



Market Place
Deddington OX15 0SE
01869 390000

4 West Street
Chipping Norton OX7 5AA
01608 489000

High Street
Bloxham OX15 4LU
01295 404040

Your dog's holiday starts here

Devoted to dogs since 2000
Forever

We provide loving home from home holiday care for your dog. Everything is arranged, overseen and supported locally by our friendly dog care professionals. We're the experts at making your dog feel at home.



Barking Mad

Happy Dog. Happy Holiday.
Happy You.



BarkingMad.uk.com

01295 477295

A franchise owned and operated under licence by Andrea and David Cawley

 **TRUSTPILOT**





Children's Day Nursery **Epwell**

- Care for children aged 2 to 5 years
- Full and part time places available
- Open Monday to Friday 9.00am – 4.00pm.
- Ofsted rating: Outstanding
- Competitive rates
- Early years grant registered.

The nursery provides excellent opportunities for children to explore and learn through play under the guidance of highly trained, experienced and caring staff.

Ring Julia on: 01295 780580 or
e-mail Julia@arknursery.net



PTC FRAMING

Let us enhance a favourite painting, that cherished photograph or a specially selected gift with a hand-made frame and mount chosen with care and finished to high quality standards.

Please give us a call on the new number below, or send an email, we would love to hear from you

01295 788099



PTC Framing
Pear Tree Cottage, Lower End, Shutford
teresaptc@hotmail.com

rachel berger

INTERIORS

We provide a comprehensive interior decoration service that includes:

- Upholstery
- Curtains, blinds and soft furnishings
- Hand painted furniture
- Lampshades and lighting
- Artwork
- Gilding and mirrors.
- Decorative wall finishes
- Hand painted natural wood beams
- Colour and decorating consultancy
- De-cluttering and Home-staging service
- Beautiful faux silk flowers
- Stockist of Osborne and Little, Linwood, Designers Guild and many more...

Our service is completely bespoke and we are happy to work with you and your budget to help you get the best out of your home.

Contact email: **rachel.berger@btinternet.com**

Telephone: Rachel on: 07913 546867

Check us out at **www.rachelberger.co.uk**
and follow us on facebook and twitter.





BESPOKE DESIGN SERVICE FOR
CUSTOM MADE FURNISHINGS

**Pattern book room for you
to browse Fabric designs**

Curtains, Blinds & Cushions

Loose covers & Lampsphade making

Headboards & bedspreads

Curtain poles & tracks

New Sofas & chairs & reupholstery



01295 788145

ann@annwoolgrove.com | ann@yarnhill.co.uk

www.annwoolgrove.com



BESPOKE HANDMADE LAMPSHADES

PERSONALISED DESIGN SERVICE

CONTEMPORARY AND CLASSICAL DESIGNS

EXTENSIVE RANGE OF FABRICS AND MANY BEAUTIFUL TRIMS

RE-COVERING SERVICE AVAILABLE

ANN WOOLGROVE
TEL/FAX: 01295 788145
ann@yarnhill.co.uk
Oxfordshire/Cotswolds

www.yarnhill.co.uk

LYNN HAMPTON
TEL: 01442 215577
lynn@yarnhill.co.uk
Hertfordshire/London



OXON PLUMBERS LTD

OVER 30 YEARS' EXPERIENCE IN THE PLUMBING & HEATING INDUSTRY

T: 01295 738 332 | **M:** 07866 713 706

E: oxonplumbers@gmail.com | **W:** www.oxonplumbers.com

A: Wykham, Hornton Lane, Horley, Banbury, Oxon, OX15 6BL

Oil, gas & LPG boiler servicing

Boiler installations & breakdown service

Renewables

Landlords' Gas Safety Certificates

Central heating upgrades

Oxon Plumbers Ltd is registered in England & Wales.
Registration number 10720404



The Firs Garage

- All Makes Vehicle Servicing
- Competitive Prices
- Factory trained mechanics
- MOT • Parts • Bodyshop • Fuel
- Large site with easy parking
- Extensive range of new and used vehicles



ALL MAKES SERVICING

Hook Norton • Oxon • OX15 5DD (1 mile north of Hook Norton Village)
Tel: 01608 737349/737641 • www.firs-garage.com

Family Business established 1960



Jonathan Perry – Chimney Sweep

Guild of Master Chimney Sweeps Qualified

Agas, Inglenooks, multi-fuel stoves and open fires all swept. All work certified for house insurance purposes.

For a clean professional and friendly service please contact me on:

Mobile: 07557 058051

Email: jperrychimneysweep@gmail.com





SMITHS NEWSAGENTS

**We deliver daily newspapers
and magazines to the village.**

**Any combination of
days/week catered for.**

**Ring us on 01295 268499
or e-mail
info@smithsnewsagents.co.uk**



SIMPLY BEAUTIFUL DECORATION

**All forms of interior and exterior painting
and decorating, specialising in murals.**



**T: 01295 811026
E: pete@noahsarkpainting.co.uk
W: noahsarkpainting.co.uk**

**Pebsham Cottage, Aynho Road, Adderbury
Oxfordshire, OX17 3NL**



Red Horse Vale Ltd

**Windmill Farm
Banbury Road (A422)
Oxhill**

Warwickshire CV35 0RL

Tel: 01926 642832

**Solid Fuels
Logs and Kindling Wood
Gas in Cylinders
Central Heating Oil
Farm Oils
Oil Tanks
Sand and Ballast
Cement
Slabs
Fencing Materials
Garden Supplies
Top Soil, Composts, Wood Chippings
Flower Pots
Animal Feeds
Garden Sheds**

Call us for a free quotation!

Shop on-line at redhorsevale.co.uk

MasterCard

VISA

VISA

Electron

Maestro

SOLO

Phil's Auto repairs

Lower end shutford

*Servicing - Repairs - Fault finding/diagnostics
All makes and models*

////////////////////////////////////

Qualified technician

////////////////////////////////////

*Follow my Facebook page at
Phils Auto repairs*

01295780941 - 07786668331

milk&more

Andrew Butler

**Your local milkman delivering
milk and groceries to your door**

0845 606 3 606

www.milkandmore.co.uk



Serenity at Sibford

Gautherns Barn (nr Temple Mill)

01295 788463

Jo is looking forward to seeing you in her little haven of peace and tranquility for this, her 12th year in Sibford!

Specialist in Environ and Guinot facials and skincare,
OPI gel manicures and pedicures, LVL lash lift, advanced electrolysis blemish removal such as skin tags, age spots, milia, seborrheic keratosis.

Hot stone deep tissue massage, waxing, tinting, Jane Iredale mineral make-up and ANP skincare supplements

Open Monday to Saturday

Free Private Parking

email: jo@serenityatsibford.co.uk

Please visit my website and use my online booking system

www.serenityatsibford.co.uk

FAIRFAX INTERIORS

*The Old Bakery, High Street, Lower Brailes,
nr Banbury, Oxfordshire OX15 5HW
Tel: 01608 685301*

e-mail: info@fairfaxinteriors.com

website: www.fairfaxinteriors.com

For over 20 years **Fairfax Interiors**, under the guidance of owner Caroline Elliott, has helped people throughout the United Kingdom to improve their homes. Fairfax has one of the largest collections of designer fabrics, wallpapers and trimmings in the south of England. This coupled with a passion for design and an unerring ability to fulfil clients needs make this a unique Interiors Design Practice.

Soft furnishings and curtains are made in house by an exceptionally skilled team of seamstresses; fitting and upholstery are carried out to exacting standards ensuring total customer satisfaction. Fairfax provides project management for full refurbishment, as well as dressing houses for sale.

Caroline likes to support local and emerging designers together with more established names such as Zoffany, Designers Guild, Andrew Martin and Pierre Frey to name just some from the vast selection available to view in the friendly and easily accessible showroom and design studio.



The Croft Beauty Studio

Skincare, Massage and Beauty Treatments in Epwell

- Facials using Neal's Yard Organic Remedies
- Swedish and Deep Tissue Massage
 - Manicure / Pedicure
- Lash and brow tinting / shaping
- Waxing, including Brazilian and Hollywood with hot wax

Contact Carol – 07841 657 764

www.thecroftbeautystudio.co.uk

www.uk.nyrorganic.com/shop/croftbeautystudio



EQUINE PRACTICE

Celebrating 50 Years of Care

- 24 Hour Emergency Call Out
- Free Zone Visit Scheme
- Dentistry & Vaccination
- Full Surgical Facilities (inc. Colic Surgery)
- Lameness Work-ups
- Medical Investigation
- Portable Endoscopes, X-ray & Ultrasound scanners
- AI services
- JMB Height Measurement
- Worm Egg Counts
- Laboratory Facilities

Ratley Lodge
Ratley
Banbury
Oxfordshire OX15 6DT

Tel: 01295 670501
www.avonvaleequine.co.uk



MITSUBISHI
MOTORS

Drive your Ambition

The Firs Garage

www.firs-garage.com

Family business established 1960

Tel: 01608 737349 / 737641

Hook Norton, OX15 5DD

ECLIPSE CROSS



New Mitsubishi Eclipse Cross
petrol SUV, designed to inspire

Extensive range of new
and used economical cars,
hybrids & 4x4's

Part exchange welcome

Service

MOT Parts

Bodyshop

Fuel Shop

**ALL MAKES
SERVICING**
COMPETITIVE PRICES

Tim Clarke Performance Coaching

Fulfilling potential for adults and teenagers

30 years experience as a qualified
coach/teacher

A Member of The Coaching Academy
Life Coaching/Performance Coaching
and Tuition for GCSE and A Level Maths
Based near Banbury, DBS checked

Tel 07984 140 739

Email clarke.tutoring@btinternet.com

www.clarketutoring.com

Shutford News Advertising Rates

Full page £15.00 per edition

Half page £10.00 per edition

Quarter page £5.00 per edition

Includes advert / link on village website:

www.shutfordvillage.com

Contact: shutfordvillagenews@gmail.com

R. Wakelin Heating Services Ltd

31 The Dairyground, Shutford, Oxon. OX15 6PN

Tel: 01295-788359 Mobile: 07810-754434

E-Mail: ross@wakelinheatingservices.co.uk

Boiler Servicing / Repairs / Replacements

Gas and Oil

Domestic – Commercial

Gas Safe Registered Oftec Registered

(190421)

(C6644)



GENESIS
CONTRACTING

**Building Contractor for
Shutford's new Village Hall**

**projects@genesiscontracting-
uk.com**

01452 526 195

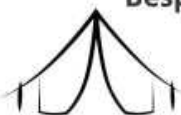
www.genesiscontracting-uk.com



Cotswold Marquees Ltd

Whatever your event we can supply all you need!

Frame and Traditional Marquees, Linings and Starcloth, Furniture,
Dancefloor, heating, Lighting and Accessories



Bespoke manufacture of canvas and PVC covers

Camping Tents, Caravan Awnings, Boat and Trailer
Cover: Zip repair/replacement, Kader replacement,
patching or re-inforcing seams



01608 686900

www.cotswoldmarquees.co.uk • info@cotswoldmarquees.co.uk

Unit 9, Brailes Industrial Estate, Lower Brailes, OX15 5JW



THE BAG 'N' BOX MAN

- Bags & Boxes
- Bubble Wrap & Loose Fill
- Corrugated Rolls
- Bin Bags
- Centre Feed Rolls
- Hand Towels & Toilet Rolls
- Lay Flat Tubing
- Bubble & Mailite Bags
- Tapes & Dispensers
- Kraft & Tissue Papers
- Pallet Wrap & Pallet Covers
- Gripseal Bags
- Foil, Clingfilm & Parchment
- Napkins
- Catering Gloves
- + Lots more!

No Minimum Order Value!

Visit our comprehensive and easy to navigate website
where you will find thousands of items. Otherwise give
our friendly sales staff a call.



Tel: 01295 788522

Fax: 01295 788523

Email: sales@bagnboxman.co.uk

www.bagnboxman.co.uk

Formerly - C Young (Wrappings) Ltd



S.K. Auto Repairs

SERVICE • REPAIRS • TYRES • MOT TESTING
VISIT US AT THE GOOD GARAGE SCHEME
OPEN 6 DAYS A WEEK

Unit 6, Manor Farm Buildings, Mollington Lane
Shotteswell, Banbury, Oxfordshire OX17 1HZ

Telephone: 01295 738300
www.skautorepairs.co.uk

PLT  **PLUMBING**

MILCOMBE, BANBURY

FOR ALL YOUR DOMESTIC PLUMBING

FULLY QUALIFIED ENGINEER

T: 01295 368150 M: 0742 5982855

E-mail: info@pltplumbing.co.uk

HUNT BESPOKE KITCHENS & INTERIORS



High St, Bloxham, OX15 4LT

www.huntbespokekitchens.com | 01295 721111

We are also active on Facebook and Instagram



MAIL BOXES ETC.

For all your business
& home office needs

- PARCEL SHIPPING via UPS, FedEx, TNT, DHL & Parcelforce
- SAME DAY COURIER SERVICE to anywhere in mainland UK
- DIGITAL PRINT AND COPY SERVICE
- DOCUMENT SERVICES including finishing, laminating and binding
- MAIL BOX RENTAL - at Banbury's most prestigious business address

FIND US IN THE SHADOW OF BANBURY CROSS, AT
29 - 30 HORSE FAIR, BANBURY OX16 0BW

t: 01295 277733 • f: 01295 277763 •
e: info@mbebanbury.co.uk www.mbebanbury.co.uk

[illegible]

Diary

April		
Tuesday	2	WI Meeting 10:00 am
Thursday	4	Meet & Eat, Village Hall, 12:30-2pm (weekly)
Monday	15	Lent Lunch, 12-2pm Village Hall
Sunday	7	Village Litter Pick, 10:00 am bus shelter
Monday	22	Easter Egg Competition, 2pm Village Hall
Wednesday	24	Shutford Film Club, 7:30 pm
Sunday	28	Breakfast, Village Hall, 9:30-11:00am
Sunday	28	Kids Film Club, 2:30 pm
Monday	29	Book Club, Village hall, 7:30 pm
May		
Thursday	2	Local Elections, Village Hall
Monday	6	May Madness, 2-5 pm, Village Hall
Tuesday	7	WI: 10:00 am Village Hall
Wednesday	8	Parish Council Meeting, Village Hall 7:30pm
Thursday	9	Meet & Eat, Village Hall, 12:30-2pm (weekly)
Saturday	18	Beetle Drive, Village Hall 4-6pm
Saturday	25	Film Club, Village Hall, 7:30 pm
Sunday	26	Breakfast, Village Hall 9:30-11:00 am
Monday	27	Book Club, Village Hall 7:30 pm
Saturday	22	Shutford Summer Festival 1-10:30pm
		For full details of activities in the village hall, please see village website

The 'Shutford News' Team - Editor: Rita Livesey

Editorial Team: Margaret Holloway

Advertising & Accounts: Rita Livesey

Distribution: Pam & Di

Printing: Mail Boxes Etc, Banbury

The next planning meeting will be on

Tuesday 7 May @ 7:00 pm in The George&Dragon

DEADLINE FOR OUR NEXT ISSUE: Saturday 18 May, 2019

Email: shutfordvillagenews@gmail.com

Please note dates are correct at the time of going to print.

Please visit www.shutfordvillage.com for up to date information.



Heaven and Stubbs



- Bespoke furniture of the highest quality and specification
- Long established with high levels of recommendations
- Youtube video testimonials
- 46 X Houzz 5 star reviews



t: 01295 812 423 e: info@heavenandstubbs.com w: heavenandstubbs.com



Showroom:

Unit 16 Twyford Mill, Adderbury, Oxfordshire OX17 3SX.

(Please call prior to making your journey)





Website: www.thegeorgeanddragon.com
Email: info@thegeorgeanddragon.com Phone: 01295 780320

Upcoming quiz - Sundays @ 7pm:
14th April, 28th April, 12th May, 26th May

Curry night - First Tuesday of the month, next on Tuesday 2nd April and Tuesday 7th May. Booking advised.

Saturday 13th April 8pm - Live music from **The Red Onions**

Game of Thrones viewing from Monday 15th April, see website to confirm timings. Winter is coming.....



Saturday 27th April 8pm - Live old school music from **Broken**

Saturday 8th June 8pm - Live music from **Pete Watkins**

Saturday 20th July - **80's party and karaoke! Dress to impress!**

Easter chocolate box giveaway - donate £2 and put your name in for the draw. Funds raised go towards new play equipment on the dairyground. Donations can be made in the pub or via www.gofundme.com/shutford-village-playground

Food - New Menu

Food served 12-2:15 and 5-8 Mon, Tues, Thur, Fri and 12-8 at weekends.

Part-time cook needed, no experience needed as full training will be given however a pleasure in cooking would be welcome. Please get in touch with Juliette if interested.

Please keep an eye on the website for new events.