

SHUTFORD NEWS

Issue No. 216

November/December





**Every last Saturday
in the month!
Shutford Village Hall**

Doors open 7:00 pm/Film starts 7:30pm

Please note no film in December!

**Saturday 27 January 2018
*'O Brother, Where Art Thou?***

Ulysses Everett McGill (George Clooney) is having difficulty adjusting to his hard-labour sentence in Mississippi. He scams his way off the chain gang with simple Delmar (Tim Blake Nelson) and maladjusted Pete (John Turturro), then the trio sets out to pursue freedom and the promise of a fortune in buried treasure.



Subscribe to a year's membership

Adults: £12.00 Young Adults (12-18): £6:00, payable on the night or before contact Karen Wilson on

karenwilson6022@gmail.com

Dear Villagers

Welcome to our last edition of the year!

What a great year it has been especially with the gift of our new village hall, which is thriving with village events. See inside for a 'What's on in December & January.



A very warm welcome to our new landlords, Juliette & Ian Currums who have moved from Northampton into The George & Dragon with their son's Charlie (8) and Oliver (6). They chose Shutford because of "beautiful village and beautiful pub". We wish them all the best in their new role and I am sure I can say on behalf of the whole village, we will support the pub to keep it thriving and a place where we can meet friends old and new.

Wishing everyone in Shutford a very Merry Christmas and Happy New Year!

A handwritten signature in cursive script that reads "Rita".

Rita Livesey

Editor Email: rita@rlmarketing.co.uk

SHUTFORD VILLAGE HALL
100+ CLUB RESULTS

SEPTEMBER £75.00 £10.00 £5.00

Ann Yeomans Charlotte Stanley Teresa Bull

OCTOBER £35.00 £10.00 £5.00

Teresa Bull Jo Mates Nigel Forrester

NOVEMBER £35.00 £10.00 £5.00

Brian Ailsby Steve Prout Jacky Hone

The December Draw will take place at the
Christmas Bingo on Friday 1st December
in Shutford Village hall with a
First Prize of £50.00

We started this half year in October with a total of
139 members.

First Prize for March 2017 will be £70.00
GOOD LUCK!

New Volunteers needed for Shutford Village Hall
100+ Club!

The 100+ Club started in Shutford in 1998 by Margaret Holloway and Joan Wright who have worked tirelessly knocking on our doors and managing the membership. To date the club has raised an amazing total of £13,642.49 (March membership)! Current membership is 139.

Now its time for Margaret and Joan to hand over the reins to someone who can take this on. Are you willing to take on the role? Margaret & Joan are keen to do a handover at the start of the New Year. Please contact the village hall committee to discuss further on shutordvhc@gmail.com.

XMAS BINGO

Friday 1st December 2017

**In Shutford Village Hall
Eyes Down 7.30pm**

**Any Donations, Prizes etc. to either
JOAN WRIGHT: 788336 or
MARGARET HOLLOWAY: 788396**

In aid of Shutford Village Hall Funds

SHUTFORD STUD

Regarding the Right of Way that runs from The Rickyards in the Village across the fields to the woods on Barton Hill.

This path runs through the woods and then along the top of the hill and down towards the Roman Road. Recently dogs have appeared in the Stables below this Right of Way when the Vet was dealing with the horses and seen running loose on Stud land below these stables where mares in foal are kept.

The Stud would be most grateful if those who use the Rights of Way over or near Stud Land, as walkers have done for many years without problems, could **please keep their dogs on leads.**

IN REMEMBRANCE OF SHUTFORD SOLDIERS

who lost their lives in WW2



As our memorial has been uncovered and surrounded by plants this year, a wreath has been placed in remembrance. Some facts about the WW2 names are included here following on from the WW1 names last year. Thanks to Rose Hancock and Barbara Shelford for their help in providing material.

JOHN WILLIAM HANCOCK was one of 9 children born to John Tustian Hancock & Emily of Jame Corner. He married Megan Emily Grant of North Newington in the spring of 1942.

Although he was in a reserved occupation as a farm worker, he joined up in the 2nd Battalion of the Somerset Light Infantry (Prince Albert's).



The 2nd Somersets, with the rest of the division, arrived in Italy in March 1944 and served in the Italian Campaign as part of the British Eighth Army in many battles such as that of Monte Cassino, one of the worst battles of the Italian Campaign, in 1944.

John was killed in action on 23 June 1944 fighting around the German defensive position known as the Gustav line. He was 21 years of age. He is buried in the Assis War Cemetery pictured below.

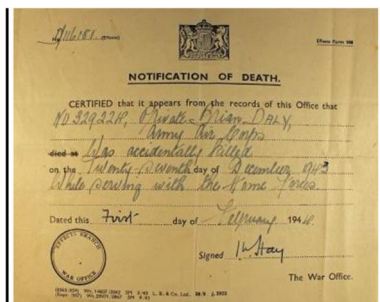


BRIAN DALY was born in the autumn of 1919 the son of Louis Daly and Hannah Hunt. Louis & Hannah were married in the Banbury area in spring 1915. Hannah's parents were Thomas Henry Hunt, plush weaver, and Hannah Wyatt.

Louis was a baker and the family lived in the Old Bakehouse in Malthouse Lane before moving to Coventry.

Brian Daly enlisted on the 15 March 1940, possibly into a Cavalry or Yeomanry Regiment. By 1943 he was serving in the Royal Army Service Corps and this is when he volunteered for Airborne Forces.

He was on parachute course 86, at RAF Ringway, 4 – 19 October 1943. Upon the completion of this course he was posted to the Holding wing at Hardwick Hall, near Chesterfield. He was killed carrying out a balloon descent on the 27 December 1943, at the Airborne Forces Experimental Establishment, Sherburn in Elmet. He is buried in Coventry Cemetery.



Coventry Standard January 8, 1944

**Notes of the Parish Council Meeting held on
Wednesday 8 November 2017**

Your Parish Council

Barbara Reynolds (Clerk)	780479
Lynne Parsons (Chair)	780649
Malcolm Goldie (Vice-Chair)	788538
Athene Duffield	788332
Rose Hancock	780622
Andrew McEwan	788266
Helen Gibbs	07500937390
Debbie Pitt	788396

Parish Councillors are pleased to welcome Debbie Pitt as a councillor completing our team.

We welcomed eight members of the public as well as Cllr. George Reynolds.

**The next meeting of the Parish Council will be on Wednesday 10 January
2018 at 7.30p.m in the village hall.**

We hope that many more members of the public will join us at future meetings..

SPEED CHECK: Three councillors met with the Road Safety and Highways Officer from OCC on 14 November. This was a very successful site visit and I am pleased to report the following. The officer agreed that he would be able to make a case for moving the 30 mph signs further out of the village on the Epwell Road. He also said that he would discuss with other colleagues the possibility of painting 30 mph roundels on the road and also the possibility of reducing the speed limit to 20 mph. It goes without saying that in these times of local government cuts whatever is finally agreed will need to be funded by the Parish Council. I have asked him to provide separate costings for all of the above as well the cost of siting flashing speed limit signs at this location for discussion at our next PC meeting. The officer said that the entrances/exits to the village on Banbury Hill and beyond Lower End are more difficult to manage due to the location. He also agreed to talk to colleagues about ensuring the white lines on Five Turns are regularly maintained as is the hedge cutting. All three of us thought this was a very productive meeting.

ALLOTMENTS: Parish Councillors are pleased to report that after various discussions with allotment holders there is no longer a waiting list for an allotment, and all those residents who were keen to cultivate an allotment are able to do so. Councillors will continue to monitor the use of allotments. We did review the rents and by a majority it was decided not to increase the rents at this time. The allotments currently represent very good value for money but we will keep the rents under review. Anyone who wishes to have an allotment should contact the clerk to the Parish Council.

DAIRY GROUND: Residents are all well aware that dogs are not allowed on the Dairy Ground and we would respectfully remind everyone of this. It has, however, been brought to our attention that the litter bins on the Dairy Ground have been used to dispose of the bags used to remove dog faeces. This is not acceptable and we would ask all dog owners to use the bins provided at various points in the village. If you think a dog litter bin is needed in an area where none is provided then let us know.

On a happier note – now that the see-saw has been repaired the Parish Council are looking to replace the swings which have been in place for some time. The clerk is bringing costings for new swings to our next meeting. Further improvements may be made at a later date.

PARISH COUNCIL DROP-IN SESSIONS

Parish Councillors intend to hold a series of drop-in sessions in the New Year. The purpose is for residents to meet their Parish Councillors and discuss any concerns they may have. It will also be an opportunity for villagers to raise issues in a more relaxed atmosphere than our more formal meetings, enjoying a cup of tea or coffee and some cake and biscuits.

The dates for these sessions are as follows and will be held in the village hall:

Saturday 20 January 2018 at 3.00 pm
Saturday 17 February 2018 at 3.00 pm
Saturday 10 March 2018 at 3.00 pm
Saturday 14 April 2018 at 3.00 pm

We look forward to welcoming you there as well as at our next Parish Council meeting.

PARISH COUNCIL DROP-IN EVENTS STARTING IN JANUARY 2018



Parish Councillors will be holding a series of “drop-ins” in the new year in the village hall where you can meet your councillors, discuss any issues or concerns you may have or simply have a chat and a cup of tea or coffee.

It could be that you would like to find out more about the work of the Parish Council.

The dates of these “drop-ins” are:

Saturday 20 January 2018 at 3.00

Saturday 17 February 2018 at 3.00

Saturday 10 March 2018 at 3.00

Saturday 14 April 2018 at 3.00

We look forward to seeing you.

In addition, we would love to see more people at our regular Parish Council meetings. Our next meeting is on Wednesday 10 January 2018 at 7.30 in the village hall.

Illuminate & Celebrate in 2018!



Don't forget to get your special dates in for 2018!

If you have a special celebration, maybe a birthday coming up, or a loved one you would like to remember, a christening or some other occasion in 2018. How special it would be for the church tower to be illuminated for this occasion for a donation of only £10. Please get in touch with Ken Jeffs on KJJ@kennyjohn.co.uk. Below is a list of those who have been or will be remembering a special day in 2017:

Date	Name	Occasion
21 st October	Alasdair Gibbs	Trafalgar Day
19 th November	Anon	John Hodgkins 70 th Birthday
20 th November	Alasdair Gibbs	Cambrai Day
20 th November	Lena Cusiter	Mark`s Birthday
23 rd November	Andrew Baud	Torin`s Birthday
30 th November	Alasdair Gibbs	St Andrew`s Day
25 th December	Ken Jeffs	Christmas Day

Any donations received after deadline will be mentioned in the next SN issue: where more than one donation is received for a specific day, illuminations will take place on following days.

CHURCH NEWS

Rector - Revd Ronald Hawkes - 780555

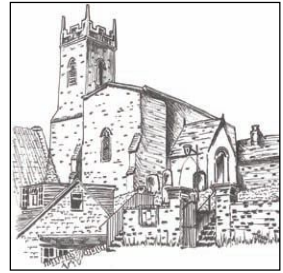
Church Wardens:

Mr Ken Jeffs – 788308

Mr John Hodgkins - 788609

SERVICES: Most Sundays 9.30am but see Wykeham

News & Benefice website for details



The Harvest Supper and Sale raised £425 for Katharine House Hospice. 30 or so people were at the event organised by the PCC. Special thanks to John, Julie, Alasdair, Geraldine and Debbie and everyone who supported the Harvest Festival & Supper in various ways.

There were 26 villagers at The Beetle Drive on 11th November, which is Armistice Day and St Martin's Day our church patron saint. There was plenty of chocolate to be enjoyed and refreshments after the games. Adults outnumbered children 3 to 1 and it is sad more families with children do not join us. £60 was raised for church funds.

Acts of Remembrance were held at 11.00am at the village war memorial on 11th & 12th November and during the Remembrance Sunday Service in St Martin's Church. The congregation of more than 50 enjoyed Deddington Brass playing for the hymns and before and after the service. £180 has been given to The Royal British Legion Poppy Appeal from a church collection and donation. There has also been a door to door collection in the village the result of which will be known in a few weeks' time. This year we have been part of the Banbury Appeal as previous organisers for the Bodicote, Shutford & Balscote Royal British Legion have moved away. Are there any British Legion members living in Shutford? The 100th anniversary of Armistice Day is on Remembrance Sunday 11th November 2018, so any events next year will be particularly poignant.

The next fundraising event for the church will be Souper Saturday at noon in Shutford Village Hall on 2nd December. Although there is a similar lunch on a Thursday, we hope those unable to come to the hall during the week will join us on Saturday. There will be a variety of homemade soups and other goodies and everyone is welcome.

The following Saturday, 9th December there will be an Advent and Christmas themed Messy Church in the hall at 4.00pm. This is suitable for pre-school and junior school children with lots of crafts and refreshments to finish.

There will be additional special services across the benefice during Advent and these are listed in the Wykeham News. Shutford's Christingle raising funds for The Children's Society will be on Sunday, 17th December at 3.00pm. There will be refreshments served in church. The next evening, there will be Carol Singing around the village starting at 6.45pm from the old bus stop. Deddington Brass will be providing music and a collection will be given to a local charity.

An Advent Carol Service is planned for Thursday, 21st December at 7.30pm with a Benefice Christmas Eve service in Shutford at 10.00am. Midnight services this year starting at 11.30pm will be in Broughton and Sibford. Christmas Morning Holy Communion here is at 9.30am.

We continue to illuminate the church tower to celebrate special occasions and although sponsorship is down this year donations received make a large contribution towards our weekly costs. It would be good to have the tower illuminated during Christmastide so please contact KJJ with any pledges.

Again, this year there will be a Christmas Tree in church from 17th December and anyone can place a star on it to remember a loved one.

We look forward to seeing you in church this Advent and Christmas: people of all denominations or none are always welcome.

"May you have the gladness of Christmas which is hope; the spirit of Christmas which is peace; the heart of Christmas which is love."

(Ada V Hendricks)

For church news visit www.wykehambenefice.org.uk, Facebook or contact KJJ@kennyjohn.co.uk

h o w d e n j o n e s



'Bringing Beautiful Music To Beautiful Places'

Saturday, 17th March 2018 at 7.30p.m.

Tickets:-£10.00 in advance/£12.00 on the door. Bring your own drinks

Contact:- Anne Pritchard – 780793 - wealdcottage@gmail.com

Kate Howden and Paul Jones are singer-songwriters, based in The North West of England, who have that special magic that captivates the audience in a unique, intimate atmosphere. Stripped back, gritty, often poignant, sometimes humorous, observations that reflect life's ups and downs, their show is a family friendly mixture of songs, tunes and stories that has the audience joining in, singing along, and laughing as they share their travelling experiences through their music and northern-tinged banter. Specialising in playing at Village Halls and Community Venues, they celebrate England in all its guises good and bad, particularly rural village life, including nature and the seasons.

With powerful harmony, skilled musicianship and beautiful arrangements, they write all their own material and between them play, guitar, mandolin, fiddle, banjo and bodhran. As contemporary musicians they enjoy exploring the acoustic sound of each unique venue and use no effects. Their show has been described as, 'relaxed and enchanting' and 'an absolute delight', 'their joy, talent and good humour were infectious'. 'music for all ages'.

You can find out more information, see an up-to-date list of tour dates and hear examples of their music by visiting, www.howdenjones.co.uk

**Shutford Striders,
Strollers and Shufflers!**

**Festive Fun Walk!
Tuesday 12 December
11:00 am**



Why not join us for a festive walk on **Tuesday 12 December at 11:00 am**. We will start at the bus shelter then wander over the fields coming back to Shutford for around 12:30 pm – 1:00 pm depending on the weather (if wet or bad weather will shorten the walk accordingly). Paying a visit to The George & Dragon for a festive drink and snack.

Everyone welcome!

Otherwise we meet on Tuesday mornings at 9:30 am by the bus shelter. We then decide where to walk and the length of walk (varies from 45 mins to 2 hours), depending on the weather conditions.

Regular attendance is not necessary, just come along when you can.

All welcome & Merry Christmas...



Who would be willing, on a rota basis, to run a monthly film club for kids in Shutford?

Email rita@rlmarketing.co.uk

Local Markets:

Banbury – Every Thursday &
Saturday, Farmer's Market – 1st
Friday of the month

Chipping Norton – Every
Wednesday Chipping Norton
Farmers – 3rd Saturday of the month

Deddington Farmers – 4th Saturday
of the month

Great Rollright – 1st Saturday of the
month

News from the Bottom

There has recently been much to occupy the inhabitants of the Bottom. The Paradise Papers have suggested that the Mayor has a number of offshore tax avoidance accounts. In fact the Mayor has welcomed the revelations, he having lost the paperwork and being unable hitherto either to locate or access his ill gotten gains. The Alderman is receiving psychiatric help having been reminded by the current 'inappropriate behaviour' scandals that Matron had fleetingly placed her hand on his knee sixty years ago at prep school; until now he has been unable to mention this unprovoked assault!

The Mayor elect is alarmed at the dual carriageway that has been effectively formed by the annexation of his garden to accommodate the frequency and size of vehicles passing through the Bottom past Wroxton Mill. The toll gates at either end of the single track road, to be installed in January, should alleviate the problem; however the Bottom elders have now submitted plans for a full bypass around the Bottom, to include a large stretch of the Grand Prix circuit due to start building in June 2018.

The editors of the Bottom News and the Shutford Bugle have held a planning meeting in order to ensure that readers receive fair and balanced accounts of the events of our area. Despite the inevitable fact that no accord could be reached, the meeting in the restored and revitalised (well done Juliette and Ian!) G&D was a most convivial occasion, almost certainly to be repeated on at least a weekly basis, assuming expense accounts hold out Rita!

The Mayor continues to take all measures possible to retain his lifetime position. Letters to the national newspapers and to Shutford News have so far yet to be published and the Mayor is referring the case to Strasburg, to see if one unelected body can find in favour of another!

A date for readers diaries. The new Mayor will be installed on Monday 12th March 2018 upon the assumption that the current Mayor's injunction has failed and that the Bottom police and armed forces stay loyal to the elected representatives. Following the Mayor making ceremony, a street party, necessitating the closure of Bottom Passage, will be open to all Shutford residents, hangers on and those citizens out on day release.

Finally, the Mayor and Alderman wish all Bottomers and Buglers a very pleasant and festive Christmas and New Year. To quote one of the Mayor's most motivating military maxims, 'If your rifle fails, there's always your bayonet to fall back on!'

At our October meeting Graham Kirby gave an illustrated talk on the History of Coins from the times of ancient Greece and Rome up to the present day. Afterwards, members were invited to view an extensive display of coins and to ask questions regarding samples of coins they had brought to the meeting.

Later in the month several of our members attended a group meeting in Hornton when 5 local institutes met to share a supper and enjoy a light hearted one act play about a fictional WI.

Our November speaker was Anne Watts who told us of her experiences nursing round the world in war zones and refugee camps, especially with children. This month we welcomed two new members from Epwell.

Visitors will be made very welcome at any of our forthcoming meetings, held in Shutford Village Hall at 10am, when our future speakers will be:

- | | |
|--------------------------|--|
| December 5 th | Christmas Social at 11am - no speaker
(bring and share buffet lunch) |
| January 6 th | Kate Allen
Safety & Independence at Home |
| February 2 nd | Christine Farmer
Masquerade - The History of Masks |

For further information on our WI, please contact either
Geraldine on 780579 or Jenny on 780570

**Next coffee morning Saturday 9 December,
Village Hall 10:30-12:30pm**

Want to learn about chess?



Carl Portman who recently hosted a chess competition in our very own village hall with WGM Tania Sachdev a big name in chess!

Carl a Director who has a background in logistics in the public sector. He has worked in warehousing, distribution, secretariat, change management, communications, project management, Data Protection and Human Resources both in the UK and Germany.

Away from logistics he is the author of works on natural history and is a qualified chess coach. His proudest moment came when he represented the United Kingdom in the NATO Chess Championships in France in 2012. Carl's motto is 'Don't complain about the dark, light a few candles'.

If you are interested to know more and for Carl to run a lecture in Shutford, simply email Carl on carlportman@btconnect.com



Are coming to Shutford for
'Jazz in January'
on

Saturday 13 January 2018 7:00 pm (music starts at
8:00 pm) at
Shutford
Village
Hall

Tickets on
sale now
£10.00 per



person £12.50 on the door
(bring your own drinks)

Only 55 tickets available so hurry, selling fast!

For tickets contact:
red.admiral@envirobridge.co.uk



Pop-in for a festive lunch special on Thursday 21 December!

Enjoy a FREE mince pie & glass of mulled wine!

Home cooked food served in the new village hall only

£2.50 (all proceeds donated to the village hall)

12:30 – 2:00 pm

**Come and join your neighbours in Shutford. Friends
and family visiting, bring them along, everyone is
welcome.**

**Book swap, local produce and a good chance to catch up
on what's happening in the village.**

**Come along make new friends, Mum's out there, please bring
your little ones, play area provided, all very welcome.**

"Very enterprising. Good service. Fine food."

www.shutfordvillage.com

Christmas Birds & Hampers!

Broughton Grounds Farm is taking orders for Christmas birds and hampers.

Free range cockerels are £3 a lb oven ready and vary in weight from about 7lb to 12lb, ie £21 to £36. Geese at £5 a lb, similar weights to cockerels. Available to collect Christmas Eve or Saturday 9th December, all free range, fresh and oven ready.

They are also offering wicker hampers again, all home produced including 5 fresh meats; a 10lb cockerel, 3-4lb beef roasting joint (topside or silverside), pack of venison (variable weights), 2.2lb pack of Oxford Sandy and Black pork sausages and a dressed pheasant or duck. Also honey, potatoes, and eggs.



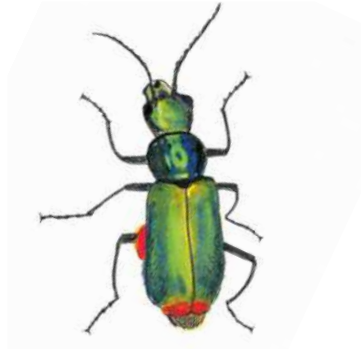
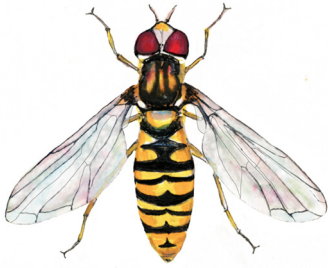
£95 or £115 with a goose instead of a cockerel. See photo above. The wicker hamper is great for gardening etc or they will give £10 for any returned after Christmas!

Contact: James Taylor

Broughton Grounds Farm

Tel: 01295 730315 Email: james@broughtongrounds.co.uk

Where have all the insects gone?



Big news in the world of insects this month is that more than three quarters of them are missing. A study by a group of entomologists in Germany, published in October, shows that the mass of flying insects collected on nature reserves across Germany has fallen dramatically, by over 75% since they began monitoring numbers in 1989. First reported in the journal [Science](#), this story has now been reported in mainstream media because scientists are pointing out that it has serious implications for all life on Earth. Insects are near the bottom of the food chain so these losses impact many other species, including those that help control pests such as birds.

Dave Goulson an ecologist from the University of Sussex involved in publishing the data, said: "If you're an insect-eating bird living in that area, four-fifths of your food is gone in the last quarter-century, which is staggering,"

The risk to human support systems is being taken very seriously and the specimens and data involved are being studied to find out more about the root causes. There have been heavy losses of wild bees and hover flies, important pollinators of food crops, but there are wider implications as insect life also contributes to the creation of healthy soil and clean water and insects pollinate the majority of flowering plants on earth, including trees and shrubs.

More studies are required to determine how widespread this trend is elsewhere. Suspected causes are loss of natural areas to industrialised agriculture and neonicotinoid pesticides, used in agriculture and horticulture, that are already implicated in the crash in wild bee populations. Ironically the insects that seem least affected by neonics are aphids, the target insects, which build up immunity. A study by Goulson's team in 2015 found that these pesticides travel through soil and remain active for many years. Wild flowers growing next to previously treated fields had higher concentrations of neonics than crops. Goulson's team have also found that the majority of garden plants and bulbs sold contain neonics. This year they published [data showing that 70% of plants](#) bought from four plant retailers contained harmful levels of neonics: "We deliberately bought plants that are known to be attractive to bees and butterflies; most of them had a bee-friendly logo, often the RHS one"



Shutford Nature Hub


Entomologists are raising awareness of the importance of pesticide free gardens as safe habitats for insects and other species. We're creating an illustrated food web of the species that have been recorded around Shutford, including plants and insects such as the ones illustrated above, all found in Shutford gardens. It shows the ecological relationships between species and how our gardens support them. We'll publish it over the next few months.

Illustrations, from the left: Marmalade Hoverfly, Red-tipped Flower Beetle, Six-spot Burnet Moth, Four-banded Longhorn Beetle.



What's on December, January & February...

Weekly...



**Pilates every
Wednesday 9:00-
10:00 am & 5:30-
6:30pm**



**Yoga every Friday
9:30-10:30am**



**Community 'pop' in
for
lunch Thursdays
from 12:30-2:00pm
All welcome**

Monthly ...



**Movie Nights! Last
Saturday in the
month. Next one
27 January 2018 'O
Brother where are
thou?'**



**Coffee Breaks
9 December 10:30-12:30pm**



**The Supper Evenings. First Friday
in the month. Next one
2 February 2018. Email:
thesuppercirclebanbury@gmail.com**

Events...



Church events in
the village hall:

2 December:

Souper Saturday

12noon

9 December: Messy

Church 4.00pm



Christmas Vintage & Craft
Fayre, Shutford Village
Hall **Sunday 3 December**
11:00am-3:00pm



Nigel Fletcher painting Workshop
for learners/beginners, oils on
Saturday 16 December. 9:30am-
12:30pm. Email
Nigel: nvfletcher@btinternet.com

Parish Councillors will be holding a series of "drop-ins" in the new year in the village hall where you can meet your councillors, discuss any issues or concerns you may have or simply have a chat and a cup of tea or coffee. First dates are:

Saturday 20 January & 17 February 3:00pm

Please check village diary on the weekly events. For information
on all the village hall activities and how to book, visit:
www.shutfordvillage.com or email: shutfordvhc@gmail.com



Sunday 3 December
11:00am-3:00pm
Shutford Village Hall
Handcrafted and vintage stalls...



Ophelia's Tower offers
 handcrafted silver
 jewellery. From
 bespoke rings to
 stunning necklaces.



JG's Wooden Crafting



*Claire's festive sweet
 treats!*



Mockingbird We
 believe that your
 children's clothing
 should be as unique as
 they are.



*allHeart Beautiful
 pottery hearts and
 dishes.*



*Pollycoddle Beautiful
 Jewellery & Gifts*



*Vintage Style Christmas
Crafts & Gifts
Cross Stitching Pictures &
Cards*



*allHeart Beautiful and unique
designs for your pets.*



*The George & Dragon
serving mulled wine &
festive treats!*

*Tea, Coffee & Cakes
£1:00 entrance fee*



*Amazing rug & mat
designs.*



*A selection of
Christmas boxes for
all your Christmas
presents.*

*Proceeds in aid of Shutford Village Hall.
Raffle in aid of The Children's Cancer and Leukaemia
Group*

Claire's Teatime Treats

Claire is baking some lovely festive treats and will be coming along to our Christmas Festive Fayre on Sunday 3 December. Here is a selection:



Christmas Cakes, last date to order 1 December:

6inch	£12
8inch	£16
10inch	£20

£4.50 for 6 Cupcakes are Christmas themed and happy to change colour of icing and flavour of cakes (lemon, orange, coffee, chocolate, vanilla)



Deep filled mince pies
£3.50 for 6 / £5.00 for 12

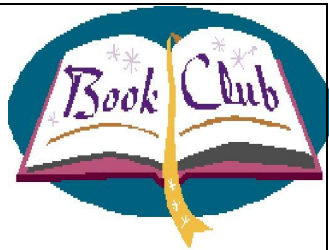
Claire lives in North Newington with her partner and 3 children. She currently works at Bishop Carpenter School as Breakfast and lunchtime supervisor. She has many years' experience in working in kitchens and holds a level 2 food and hygiene safety certificate and is registered with Cherwell District Council. She also holds a FSA certificate in food allergy training.

Claire can be contacted, Tel: 07805672006 or Email:

crofts301@btinternet.com

Or follow Claire on Facebook: @Claire'sTeatimeTreats

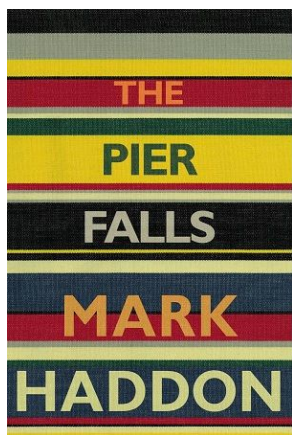
Shutford Book Club



The Shutford Book Club meets on the last Monday of each month in Shutford Village Hall 7:30 pm.

Currently the book club is full, however, you can always take part virtually. The books we are reading are regularly published in the Shutford News and on the village website, so feel free to read them alongside the Book Club. You can volunteer your thoughts via email to Kirsten Parrish or a note in the door of "The Nook" in Church Lane if you'd like to, and we'll share them at the meetings!

Forthcoming books are:



29 January: 'The Pier Falls' by Mark Haddon, hosted by Annabelle MacGregor

26 February: Eleanor Oliphant is 'Completely Fine' by Gail Honeyman, hosted by Carolyn Rann



Contact details:

Kirsten Parrish: Kirsten@kdpr.co.uk or 780412

DOMESTIC & COMMERCIAL CLEANING SERVICES

FLEXIBLE SCHEDULING TO SUIT YOUR LIFESTYLE

-DOMESTIC & COMMERCIAL CLEANING

-SPRING CLEANING

-IRONING SERVICES

-END OF TENANCY CLEANING



B&SZ Cleaning

Simply Brilliant



01295 261106

07891 978248

07460 290990



bszlimited@yahoo.co.uk



Dedicated to delivering an outstanding service since 2003

Landscaping

Tree Work

Lawn Care

Maintenance



4th Corner Landscaping

For a no-obligation quote, contact us;

info@4thcorner.co.uk

01295 817628

www.4thcorner.co.uk



COUNTY Oil Tank SOLUTIONS

— The Oil and Water Tank Specialist —

- Domestic Oil Tank Installations
- Safe Disposals and Tank Servicing
- AGA and Boiler Servicing
- Fuel Depots
- NEW Smart Gauges that link to your phone
always know what's in your oil tank wherever you are

**24 Hour
Emergency Call Out**
for Failed or Leaking
Oil Tanks and Pipework



07799 643455

james@countyoiltanksolutions.com



10 YEARS IN THE BUSINESS

**Is 2017 the
Year to have
your Tank
serviced or
changed?**



Monkeywood is an independent company set in the heart of North Oxfordshire. It combines master joinery and cabinet making to create bespoke design for even the most challenging spaces. Built on the vision of creating high quality pieces of craftsmanship with a passion for design, Tom thrives on working closely with the client to create something truly individual and to suit all personalities and functions.

Tom Coleman – 01295 533413 / 07748274345

Email: t.coleman@monkeywood.co.uk

Web: www.monkeywood.co.uk

Unit 22, Sugarswell Business Park, Shennington, Banbury, OX15 6HW

Kitchen & Furniture showroom opening soon

The background of the lower section is a photograph of a dark-colored curtain rod with a spherical finial on the right. Several white curtains are hanging from the rod, with their folds visible. The text is overlaid on this image.

JANET FREEMAN INTERIORS

Bespoke curtain and blind service

No job too small. Lined and interlined with a variety of headings. Roman blinds lined and also blackout lining, if required. Fitting service available.

Call 01295 678322.

Email: jandr.freeman@outlook.com



Serenity at Sibford

Gautherns Barn (nr Temple Mill)

01295 788463 07891 220275

Celebrating 10 Years of Relaxation and Pampering!

Specialising in Guinot and Environ Facials & Skincare

OPI Manicures and Pedicures, Lava Shell and Hot Stone Deep Tissue Massage

All Types of Blemish Removal - Age Spots, Milia, Skin Tags, Warts etc

Shellac, Waxing, Eyelash Tinting, Jane Iredale Make-Up,

Reflexology, Indian Head Massage

Fully Equipped Pilates Studio

Open Monday to Saturday with Jo and Vanessa
(20+ years experience)

Free Private Parking

email: jo@serenityatsibford.co.uk

www.serenityatsibford.co.uk

www.pilatesinsibford.co.uk



Children's Day Nursery **Epwell**

- Care for children aged 2 to 5 years
- Full and part time places available
- Open Monday to Friday 9.00am – 4.00pm,
- Ofsted rating: Outstanding
- Competitive rates
- Early years grant registered.

The nursery provides excellent opportunities for children to explore and learn through play under the guidance of highly trained, experienced and caring staff.

Ring Julia on: 01295 780580 or
e-mail Julia@arknursery.net



PTC FRAMING

Let us enhance your art or that cherished photograph with a hand-made frame and mount chosen with care and finished to high quality standards.

Or maybe you need a personal gift for a special occasion ? Ask about our bespoke collages featuring your personal photographs

Please give us a call on the number below, we would love to hear from you

01295 788544

PTC Framing
Pear Tree Cottage, Lower End, Shutford



rachel berger

INTERIORS

We provide a comprehensive interior decoration service that includes:

- Upholstery
- Curtains, blinds and soft furnishings
- Hand painted furniture
- Lampshades and lighting
- Artwork
- Gilding and mirrors.
- Decorative wall finishes
- Hand painted natural wood beams
- Colour and decorating consultancy
- De-cluttering and Home-staging service
- Beautiful faux silk flowers
- Stockist of Osborne and Little, Linwood, Designers Guild and many more...

Our service is completely bespoke and we are happy to work with you and your budget to help you get the best out of your home.

Contact email: **rachel.berger@btinternet.com**

Telephone: Rachel on: 07913 546867

Check us out at **www.rachelberger.co.uk**
and follow us on facebook and twitter.



Rachel Berger Interiors - High street, Deddington, OX15 0SJ



Home and Small Business Computer Services

Support for PCs and MACs

Repair and supply of laptop and desktop systems

Wireless and wired networks installed and maintained

Broadband connections configured

Home and Small Office telephone systems supplied and maintained

Call Derek Brotherston – 01608 730989

Or email – enquiries@activeconnexions.co.uk

Supporting clients in North Oxfordshire since 2001

www.activeconnexions.co.uk



BESPOKE DESIGN SERVICE FOR
CUSTOM MADE FURNISHINGS

**Pattern book room for you
to browse Fabric designs**

Curtains, Blinds & Cushions

Loose covers & Lampsshade making

Headboards & bedspreads

Curtain poles & tracks

New Sofas & chairs & reupholstery



01295 788145

ann@annwoolgrove.com | ann@yarnhill.co.uk

www.annwoolgrove.com



BESPOKE HANDMADE LAMPSHADES

PERSONALISED DESIGN SERVICE

CONTEMPORARY AND CLASSICAL DESIGNS

EXTENSIVE RANGE OF FABRICS AND MANY BEAUTIFUL TRIMS

RE-COVERING SERVICE AVAILABLE

ANN WOOLGROVE
TEL/FAX: 01295 788145
ann@yarnhill.co.uk
Oxfordshire/Cotswolds

www.yarnhill.co.uk

LYNN HAMPTON
TEL: 01442 215577
lynn@yarnhill.co.uk
Hertfordshire/London

eau ≈

bathroom design, supply & installation



01295 477477

eaubathrooms.co.uk

FAIRFAX INTERIORS

*The Old Bakery, High Street, Lower Brailes,
nr Banbury, Oxfordshire OX15 5HW*

Tel: 01608 685301

e-mail: info@fairfaxinteriors.com

website: www.fairfaxinteriors.com

For over 20 years **Fairfax Interiors**, under the guidance of owner Caroline Elliott, has helped people throughout the United Kingdom to improve their homes. Fairfax has one of the largest collections of designer fabrics, wallpapers and trimmings in the south of England. This coupled with a passion for design and an unerring ability to fulfil clients needs make this a unique Interiors Design Practice.

Soft furnishings and curtains are made in house by an exceptionally skilled team of seamstresses; fitting and upholstery are carried out to exacting standards ensuring total customer satisfaction. Fairfax provides project management for full refurbishment, as well as dressing houses for sale.

Caroline likes to support local and emerging designers together with more established names such as Zoffany, Designers Guild, Andrew Martin and Pierre Frey to name just some from the vast selection available to view in the friendly and easily accessible showroom and design studio.



The Firs Garage

- All Makes Vehicle Servicing
- Competitive Prices
- Factory trained mechanics
- MOT • Parts • Bodyshop • Fuel
- Large site with easy parking
- Extensive range of new and used vehicles



ALL MAKES SERVICING

Hook Norton • Oxon • OX15 5DD (1 mile north of Hook Norton Village)
Tel: 01608 737349/737641 • www.firs-garage.com

Family Business established 1960



Jonathan Perry – Chimney Sweep

Guild of Master Chimney Sweeps Qualified

Agas, Inglenooks, multi-fuel stoves and open fires all swept. All work certified for house insurance purposes.

For a clean professional and friendly service please contact me on:

Mobile: 07557 058051

Email: jperrychimneysweep@gmail.com





SMITHS NEWSAGENTS

**We deliver daily newspapers
and magazines to the village.**

**Any combination of
days/week catered for.**

**Ring us on 01295 268499
or e-mail
info@smithsnewsagents.co.uk**



SIMPLY BEAUTIFUL DECORATION

**All forms of interior and exterior painting
and decorating, specialising in murals.**



**T: 01295 811026
E: pete@noahsarkpainting.co.uk
W: noahsarkpainting.co.uk**

**Pebsham Cottage, Aynho Road, Adderbury
Oxfordshire, OX17 3NL**



Red Horse Vale Ltd

**Windmill Farm
Banbury Road (A422)
Oxhill**

Warwickshire CV35 0RL

Tel: 01926 642832

**Solid Fuels
Logs and Kindling Wood
Gas in Cylinders
Central Heating Oil
Farm Oils
Oil Tanks
Sand and Ballast
Cement
Slabs
Fencing Materials
Garden Supplies
Top Soil, Composts, Wood Chippings
Flower Pots
Animal Feeds
Garden Sheds**

Call us for a free quotation!

Shop on-line at redhorsevale.co.uk





Skincare, Massage and Beauty Treatments in Epwell

- Facials using Neal's Yard Organic Remedies
- Swedish and Deep Tissue Massage
 - Manicure / Pedicure
- Lash and brow tinting / shaping
- Waxing, including Brazilian and Hollywood with hot wax
 - Spray tans

Contact Carol – 07841 657 764

www.thecroftbeautystudio.co.uk

www.uk.nyorganic.com/shop/croftbeautystudio

Colour Analysis by Annie Broe

I will show you which colours are best for you. Wearing the right colours is an easy and effective way to enhance your appearance.

You will instantly look more radiant, younger and healthier

You will feel more confident

Colours are very powerful – use this power to your advantage and look fantastic! Gift Vouchers available – **the perfect present**

For a personal colour analysis or for more details please call me on 01295 780637 or 07930 398151 or email

annie4colourandstyle@gmail.com



Learn to paint !

Small classes or one to one tuition in oil or watercolour with Nigel Fletcher

To find out more:
tel: 07792 657 248
nvfletcher@btinternet.com



Yoga Classes

- A strong flowing class
- Fantastic for developing strength and flexibility
- Classes Tuesday, Thursday, Friday and Saturday
- Located in Lower Brailes

www.yoga-in-brailes.co.uk
info@yoga-in-brailes.co.uk
07717 221 756





HUNT BESPOKE KITCHENS & INTERIORS

t: 01295 721111 • mail@huntbespokekitchens.com
High Street, Bloxham, OX15 4LT
www.huntbespokekitchens.com



MAIL BOXES ETC.

For all your business
& home office needs

- PARCEL SHIPPING via UPS, FedEx, TNT, DHL & Parcelforce
- SAME DAY COURIER SERVICE to anywhere in mainland UK
- DIGITAL PRINT AND COPY SERVICE
- DOCUMENT SERVICES including finishing, laminating and binding
- MAIL BOX RENTAL - at Banbury's most prestigious business address

FIND US IN THE SHADOW OF BANBURY CROSS, AT
29 - 30 HORSE FAIR, BANBURY OX16 0BW

t: 01295 277733 • f: 01295 277763 •
e: info@mbebanbury.co.uk www.mbebanbury.co.uk



Free Zone Visit Scheme
Dentistry and Vaccination
Full Surgical Facilities (Inc. Colic Surgery)
Lameness Workups
Medical Investigation
Portable endoscopes, x-ray and ultrasound scanners
AI services
JMB Height Measurement
Worm Egg Counts
Laboratory Facilities

Ratley Lodge, Ratley, Banbury, Oxfordshire, OX15 6DT
www.avonvaleequine.co.uk



Your Local Equine Practice

01295 670501



**MITSUBISHI
MOTORS**

The Firs Garage

www.firs-garage.com

Family business established 1960

Tel: 01608 737349 / 737641

Hook Norton, OX15 5DD



New Mitsubishi vehicle range
to suit all motoring needs
Call Firs sales to book a test drive

Extensive range of new
and used economical
cars, hybrids & 4x4's
Part exchange welcome

Service
MOT Parts
Bodyshop
Fuel Shop



**MITSUBISHI
MOTORS**

**ALL MAKES
SERVICING**
COMPETITIVE PRICES

Private Tuition Available

25 years experience as qualified teacher

Maths and Physics to A Level

English, Maths and Science to GCSE

Based in Shenington, but can travel to surrounding areas

CRB check and references available on request

Tel: 07984 140739 or 01295 678676

Email: clarke.tutoring@btinternet.com

milk&more

Andrew Butler

Your local milkman delivering
milk and groceries to your door

0845 606 3 606

www.milkandmore.co.uk

Shutford News Advertising Rates

Full page £15.00 per edition

Half page £10.00 per edition

Quarter page £5.00 per edition

Includes advert / link on village website:

www.shutfordvillage.com

R. Wakelin Heating Services Ltd

31 The Dairyground, Shutford, Oxon. OX15 6PN

Tel: 01295-788359 Mobile: 07810-754434

E-Mail: ross@wakelinheatingservices.co.uk

Boiler Servicing / Repairs / Replacements

Gas and Oil

Domestic – Commercial

Gas Safe Registered Oftec Registered

(190421)

(C6644)



GENESIS
CONTRACTING

**Building Contractor for
Shutford's new Village Hall**

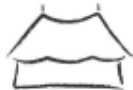
**projects@genesiscontracting-
uk.com**

01452 526 195

www.genesiscontracting-uk.com



- Dog Day Care
- Walking
- Home Boarding Services
- Please email us on:
 - premierpawsandpets@hotmail.com
- M: 07951 830004



Cotswold Marquees Ltd

Whatever your event we can supply all you need!

Frame and Traditional Marquees, Linings and Starcloth, Furniture,
Dancefloor, heating, Lighting and Accessories

Bespoke manufacture of canvas and PVC covers



Camping Tents, Caravan Awnings, Boat and Trailer
Cover: Zip repair/replacement, Kader replacement,
patching or re-inforcing seams



01608 686900

www.cotswoldmarquees.co.uk • info@cotswoldmarquees.co.uk
Unit 9, Brailes Industrial Estate, Lower Brailes, OX15 5JW



S.K. Auto Repairs

SERVICE • REPAIRS • TYRES • MOT TESTING
VISIT US AT THE GOOD GARAGE SCHEME
OPEN 6 DAYS A WEEK

Unit 6, Manor Farm Buildings, Mollington Lane
Shotteswell, Banbury, Oxfordshire OX17 1HZ

Mobile: 07769 565114
Telephone: 01295 738300

www.skautorepairs.co.uk • Email: stewartkeene@aol.com

PLT  **PLUMBING**

MILCOMBE, BANBURY

FOR ALL YOUR DOMESTIC PLUMBING

FULLY QUALIFIED ENGINEER

T: 01295 368150 M: 0742 5982855

E-mail: info@pltplumbing.co.uk

Let us transform the quality of your lawn!



The Lawn Care Company You Can Really Rely On

Which?
Trusted trader

Now an approved Which? Trusted Trader

- ✓ Friendly Local Business
- ✓ Pay as you go - No Contract
- ✓ Greens & Thickens the Lawn
- ✓ Safe for Children & Pets
- ✓ Controls Weeds & Moss
- ✓ Cheaper & More Effective than DIY



www.greensleeves-uk.com

01865 321421

THE BAG 'N' BOX MAN



- Bags & Boxes
- Bubble Wrap & Loose Fill
- Corrugated Rolls
- Bin Bags
- Centre Feed Rolls
- Hand Towels & Toilet Rolls
- Lay Flat Tubing
- Bubble & Mailite Bags
- Tapes & Dispensers
- Kraft & Tissue Papers
- Pallet Wrap & Pallet Covers
- Gripseal Bags
- Foil, Clingfilm & Parchment
- Napkins
- Catering Gloves
- + Lots more!

No Minimum Order Value!

Visit our comprehensive and easy to navigate website where you will find thousands of items. Otherwise give our friendly sales staff a call.



Tel: 01295 788522

Fax: 01295 788523

Email: sales@bagnboxman.co.uk

www.bagnboxman.co.uk

Formerly - C Young (Wrappings) Ltd

**Do you have difficult or
confusing emotions and
want to share them with
a qualified counsellor?**



**Do you feel you have
more to offer and want to
develop personally?**

**The Banbury Therapy Centre offers safe
affordable counselling and
psychotherapy for a variety of issues
and life situations.**

**For your FREE ASSESSMENT phone
01295 231320 to see how we can help,
or look on our website:**

www.banburytherapycentre.com



Diary

December		
Saturday	2	Souper Saturday, Village Hall 12:00 noon
Sunday	3	Christmas Vintage & Craft Fayre, Shutford Village Hall, 11am – 3pm
Tuesday	5	WI –Christmas Social, Village Hall – 11am
Thursday	7	Lunch time pop in, Shutford Village Hall, 12:30 – 2pm weekly
Friday	8	CDC Normal Waste Collection fortnightly
Saturday	9	Coffee Break: 10:30am–12:30pm, Village Hall & Messy Church 4:00 pm Village Hall
Friday	15	CDC collection Blue/Brown bins fortnightly
Monday	18	Book Club, Village Hall, 7:30pm
January 2018		
Tuesday	2	WI- Kate Allen- Helping you remain independent at home, Village Hall, 10:00am
Saturday	6	Coffee Break: 10:30am-12:30pm, Village Hall
Monday	8	Shutford News Planning Meeting, 3, Church Lane 7:30pm.
Wednesday	10	Parish Council Meeting, Village Hall, 7:30pm
Saturday	20	Meet your Parish Councillors 3:00pm Village Hall Deadline for Shutford News
Saturday	27	Film Club, Village Hall, 7:30pm
Monday	29	Book Club, Village Hall, 7:30pm
		For full details of activities in the village hall, please see village website.

The 'Shutford News' Team - Editor: Rita Livesey

Editorial Team: Margaret Holloway & Joan Wright

Advertising & Accounts: Rita Livesey

Distribution: Pam & Claudia

Printing: Mail Boxes Etc, Banbury

The next planning meeting will be on

Monday, 8 January @ 7:30 pm- 3 Church Lane, Shutford.

DEADLINE FOR OUR NEXT ISSUE: Saturday, 20 January 2018

Email: rita@rlmarketing.co.uk

Please note dates are correct at the time of going to print.

**Please visit www.shutfordvillage.com for up to date
information.**



Respoke Kitchens



Contact us now to make an appointment for a free consultation
e: howard@heavenandstubbs.com t: 01295 812 423
w: heavenandstubbs.com



Visit our showroom at
Unit 16, Twyford Mill, Adderbury, Oxfordshire OX17 3SX
(Please call prior to visiting)



George & Dragon
Shutford
T: 01295 780320
www.thegeorgeanddragon.com

*****New Owners*****

New longer opening times:

Mon – Sat - 1200 – 1100, Sun - 1200 – 1030

We are currently preparing our kitchen and will provide food soon. Please follow facebook for updates.

Facebook - **The George and Dragon, Shutford**

Next quiz night – **10th December**, time tbc.

Please enquire direct for tickets to our **New Years Eve**
1920's themed party.

We hope to see you soon!