



# SHUTFORD

Issue 241 Jan/Feb 2022

*news*



[www.shutfordvillage.com](http://www.shutfordvillage.com)

# The village hall has missed you!



"Brilliant celebrations for my 70th with 45 friends and relatives. We even managed to cook a meal in the hall kitchen for everyone." DP

"Lots of us enjoyed a brilliant Race Night and raffle to raise money for the new play equipment. Great fun and great food, washed down with the wine that we all brought. We even raised over £1400!" HNF

## Have you something to celebrate? Thinking of holding a party?

Check out [www.shutfordvillage.com](http://www.shutfordvillage.com) to look at the various facilities that the hall has to offer including fully fitted kitchen, children's tables and chairs, table cloths, cutlery, crockery & glasses for 60 people.

There is an audio system including roving microphone, big screen, projector and internet access.

Have you or do you know anyone who wants to start a class or hold a workshop? Classes previously held were very well attended.

What ever you have in mind, we would love to hear from you.

**Please contact us at [shutfordvhc@gmail.com](mailto:shutfordvhc@gmail.com)**

"I have always enjoyed the Sunday breakfasts in the Village Hall. Cooked brilliantly and to order. Good company, good value and great food." CB

"The Village Hall has great natural light, which is wonderful for the art classes. It's an ideal environment for learning and tuition." GF

**Hourly rental from only £4 for Shutford Residents**

## Dear Villagers...

I hope you all had a happy Christmas and New Year! We've plenty to look forward to this year - we're already planning celebrations for the Queen's Platinum Jubilee and (hopefully) a proper Shutford Festival later in June - see page 5 for more info on how you can take part.

To arrange these events and meetings is a lot of work for individuals to take on, and it can be a struggle to manage without the help of volunteers to lessen the load. So I'm calling on any Shutford villagers who can assist in any way - every little helps!

The **Sunday breakfasts** are very popular but they can only continue with the help from volunteers. On the last Sunday of the month, we need two or three people to help with the cooking, serving etc., and with enough people, it would only mean helping once a year.

*If you can help, please contact Debbie on [pittdebs@gmail.com](mailto:pittdebs@gmail.com)*

Shutford Village Hall needs a volunteer to run our once-popular **Film Club**. Pre-pandemic, lots of us enjoyed watching a movie in good company with a cold glass of something and some popcorn. There are plenty of past Film Club members who would love this to restart, and it would be great if one could spare an hour or so a month, choosing a film and setting up (there is help on hand for this!).

We also need a **keen gardener** to organise the monthly tidy up for the garden in front of the village hall. Again, there are volunteers ready to help, they just need a bit of guidance on what exactly to do.

*For more information about the Film Club and the garden work party, please contact [shutfordvhc@gmail.com](mailto:shutfordvhc@gmail.com)*

Keep sending in your photos and stories - weddings, new babies and special birthdays are all very welcome. I'm a sucker for a puppy or a kitten so send those in too ;-)

Remember to keep up with all the village news - simply sign up to our newsletter by visiting **[www.shutfordvillage.com](http://www.shutfordvillage.com)** and completing the on-line sign-up form.



*Angela*

Angela Bliss, Editor

Email: [shutfordvillagenews@gmail.com](mailto:shutfordvillagenews@gmail.com)

*Thanks to Martin Norrington for the cover photo.*



## VILLAGE NOTICE BOARD

*Please check the website for updates on village activities restarting or sign up to the village newsletter by visiting [www.shutfordvillage.com](http://www.shutfordvillage.com)*



*Some of the children and families from Shutford enjoying Christingle in the village hall in December*

**New yoga  
class starting  
at 9am every  
Monday**

### **BRIAN AILSBY...**

*...would like to thank you all for the Christmas cards and good wishes he received over the festive period. He didn't send any cards but has given a donation to Katherine House Hospice.*

### **Local markets**

- **Banbury** - every Thursday & Saturday
- **Banbury Farmers Market** - 1st Friday of the month
- **Chipping Norton** - every Wednesday
- **Deddington Farmers** - 4th Saturday of the month





**We are being given a long weekend to celebrate the Queen's Jubilee, from Thursday 2 June 2022 to Sunday 5 June.**

Suggested activities in Shutford are likely to include:

**Thursday 2 June**

Lighting the Beacon on Jester's Hill, along with beacons around the country. We are planning to walk to the hill in the evening, have drinks, refreshments, a brass band, followed by lighting the beacon (at 9.45pm).

**Sunday 5 June**

A street party/picnic lunch, probably on the Dairyground.



**Saturday 18 June**

**A bigger and better event than last year's Get Together!**

**VOLUNTEERS NEEDED!**

*We have a meeting at 2pm at the Village Hall on Saturday 12th February to discuss ideas and plans for the Jubilee weekend and the Shutford Festival. Everyone welcome!*

*Please email [helennixseaman@gmail.com](mailto:helennixseaman@gmail.com) if you would like to help with any of these events. We have a small events committee but more help is always appreciated. Thanks!*

## SHUTFORD NEWBIES

### WELCOME TO...

**John Harward & Hilary Pillin** who have moved from Mollington to Pear Tree Cottage in Lower End. They have three children, Alex 13, and Martha 23 and Alice 22 who live away from home. Hilary has worked for the NHS for 30+ years and is currently a strategic advisor with NHS Ambulance Services, and John sells pet and aquatic supplies online ([www.realpetstore.co.uk](http://www.realpetstore.co.uk) & [www.realaquatics.co.uk](http://www.realaquatics.co.uk)). They moved to Shutford because they love the village and are looking forward to settling in.

### WELCOME TO...

**Jan & Paul Amond** who have moved much further afield from Malaga in Spain to the Dairyground. They have a daughter Gemma and two grandchildren, Ellie and Phoebe. Jan is a retired chiropractor and Paul works in special effects. They moved to Shutford because they heard that Shutford is a pretty and friendly village, and they're both looking forward to being part of the community.

### Shutford Village Hall 100+ Club Results

#### DECEMBER RESULTS:

First Prize	£50.00	Ann Yeomans
Second Prize	£15.00	Carole Thomson
Third Prize	£10.00	Carolyn Rann

#### JANUARY RESULTS:

First Prize	£35.00	Andrew Sabin
Second Prize	£15.00	Emma Hodgkins
Third Prize	£10.00	Kieran Kennedy

*The next Prize Draw will take place on 3rd February*

**Shutford Village Hall**  
**100+ Club Membership!**

Thank you to everyone who supports the 100+ Club Membership.  
(Proceeds from the 100+ Club go to the running and maintenance costs of  
our new Village Hall.)

Club Membership costs only **£10.00**! You then get put into a monthly draw where you could win up to **£55.00**!!

We will leave your membership envelope on  
**Saturday 19 February.**

You can either drop the cash / cheque back to the address on the envelope or pay by BACS, please ensure you leave your name or membership number as a reference when paying by BACS. Here are the BACS details if you want to pay in advance:

**Sort Code: 30-90-89 Account No: 37346560**

**Cheques or Cash (cheque payable to Village Hall - Shutford)**

Not a member and want to join? Please email  
[shutfordvillagehall@gmail.com](mailto:shutfordvillagehall@gmail.com)

Please note subscriptions need to be paid on or before  
**31 March 2022** to be entered into the first monthly draw in April.

Remember you need to be in it to win it!

Thank you for your continued support.





## **Junior table tennis to spin off success of the Shutford Pingers**



Since it was relaunched last summer, the Shutford Pingers – the village’s table tennis club – now has 14 active members. The success is undoubtedly down to the hard work of two local coaches, Eric Barlow and Nick Walker, who have enthusiastically supported the club since October. The evenings have followed a structured, fun-filled format with tailored coaching. Improvements in everyone’s game are now clearly visible!

Our success has meant that we can now offer a new weekly junior club starting on Tuesday 1 February. The weekly sessions will follow the same structured format and include coaching for players up to the age of 16.

All abilities are welcome, including beginners. A few experienced players from the former North Newington club are also likely to be joining us to play. All equipment is provided - all you need is a good pair of trainers and the willingness to give it a go. We have two tables, and we are hoping to add another table soon (floor space permitting).

We will be offering the first few sessions as free tasters. Afterwards, membership will be charged at only £1 per week (payable upfront).

We look forward to meeting our future star players on Tuesday 1 February, between 6 and 7.30pm at Shutford village hall.

# The Shutford Arty Crafty Group

**FREE TILL THE END OF MARCH!**



## • ANY ABILITY, ANY ART, MEDIUM OR CRAFT •

Just bring your project and chill for two hours in relaxed company - you can even bring a drink! Friendly advice available if needed.

***Every other Wednesday at the Village Hall from 7.00-9.00pm,  
next sessions are on February 2nd & 16th***

## All change at the Shutford Book Club...

We've decided that as we can't expand the group (and we hate saying no), we are going to change to the **Shutford Book Review**. We will report on the books we read each month to inspire anyone looking for a good read.

These are the next two books and our summaries will appear in the March edition of the Shutford News.



## VILLAGE HALL OPENING OFFER EXTENDED TILL 31st MARCH 2022

The Hall is now open for bookings, subject to the current Covid guidance. We would like to welcome you back to a Covid secure premises. The committee would like to offer

**Shutford Residents a discount until 31st March 2022.**

**Hire charges will be reduced to HALF the normal price.**

Rate	Residents	Non-residents
Regular Hourly	£8.00 (£4.00 until 31 March 2022)	£10.00
One-off hourly	£12.00 (£6.00 until 31 March 2022)	£14.00
4 hour sessions	£30.00 (£15.00 until 31 March 2022)	£50.00
Full day (9-5 pm)	£60.00 (£30.00 until 31 March 2022)	£100.00
Full use of Kitchen	£5.00	£5.00

**Please contact us at [shutfordvhc@gmail.com](mailto:shutfordvhc@gmail.com)**

Banbury Hill, Shutford, Banbury OX15 6PE | [shutfordVHC@gmail.com](mailto:shutfordVHC@gmail.com) | [www.shutfordvillage.com](http://www.shutfordvillage.com) | Charity No. 304364



# VILLAGE DIARY

## FEBRUARY

MON	TUE	WED	THU	FRI	SAT	SUN
	1 <i>W.I. 10.00</i> <i>Table Tennis</i> <i>6.30 &amp; 7.30</i>	2 <i>Arty Crafty</i> <i>Group 7.00</i>	3 <i>Pilates 6.30</i> <i>Pilates 7.45</i>	4 <i>Green bin</i> <i>collection</i>	5 <i>Oil painting</i> <i>9.30-12.30</i>	6
7 <i>Yoga 9.00</i>	8 <i>Table Tennis</i> <i>6.30 &amp; 7.30</i>	9	10 <i>Pilates 6.30</i> <i>Pilates 7.45</i>	11 <i>Brown &amp;</i> <i>blue bin</i> <i>collection</i>	12 <i>Fete</i> <i>Committee</i> <i>2.00</i>	13
14 <i>Yoga 9.00</i>	15 <i>Table Tennis</i> <i>6.30 &amp; 7.30</i>	16 <i>Arty Crafty</i> <i>Group 7.00</i>	17 <i>Pilates 6.30</i> <i>Pilates 7.45</i>	18 <i>Green bin</i> <i>collection</i>	19 <i>Card making</i> <i>10.00-12.00</i>	20
21 <i>Yoga 9.00</i>	22 <i>Table Tennis</i> <i>6.30 &amp; 7.30</i>	23	24 <i>Pilates 6.30</i> <i>Pilates 7.45</i>	25 <i>Brown &amp;</i> <i>blue bin</i> <i>collection</i>	26	27 <i>Breakfast</i> <i>9.30</i> <i>Garden work</i> <i>party 10.00</i>
28 <i>Yoga 9.00</i>						

## MARCH

MON	TUE	WED	THU	FRI	SAT	SUN
	1 <i>W.I. 10.00</i> <i>Table Tennis</i> <i>6.30 &amp; 7.30</i>	2 <i>Arty Crafty</i> <i>Group 7.00</i>	3 <i>Pilates 6.30</i> <i>Pilates 7.45</i>	4 <i>Green bin</i> <i>collection</i>	5 <i>Oil painting</i> <i>9.30-12.30</i>	6
7 <i>Yoga 9.00</i>	8 <i>Table Tennis</i> <i>6.30 &amp; 7.30</i>	9 <i>Parish</i> <i>Council 7.30</i>	10 <i>Pilates 6.30</i> <i>Pilates 7.45</i>	11 <i>Brown &amp;</i> <i>blue bin</i> <i>collection</i>	12	13
14 <i>Yoga 9.00</i>	15 <i>Table Tennis</i> <i>6.30 &amp; 7.30</i>	16 <i>Arty Crafty</i> <i>Group 7.00</i>	17 <i>Pilates 6.30</i> <i>Pilates 7.45</i>	18 <i>Green bin</i> <i>collection</i>	19 <i>Card making</i> <i>10.00-12.00</i>	20
21 <i>Yoga 9.00</i>	22 <i>Table Tennis</i> <i>6.30 &amp; 7.30</i>	23	24 <i>Pilates 6.30</i> <i>Pilates 7.45</i>	25 <i>Brown &amp;</i> <i>blue bin</i> <i>collection</i>	26	27 <i>Breakfast</i> <i>9.30</i> <i>Garden work</i> <i>party 10.00</i>
28 <i>Yoga 9.00</i>	29 <i>Table Tennis</i> <i>6.30 &amp; 7.30</i>	30 <i>Arty Crafty</i> <i>Group 7.00</i>	31 <i>Pilates 6.30</i> <i>Pilates 7.45</i>			

We held our December meeting this year as usual, unlike last year when meetings were banned, but we didn't go out for our traditional Christmas meal later in the month. We gave our brains a workout with two quizzes, one on Carols and another on Flowers & Herbs before enjoying a 'bring and share' buffet. Cards were exchanged and presents drawn from Secret Santa's sack.

We received some sad news in December that two of our long standing members had died; Jean Moyle, from Banbury, and Ann Yeomans from Shutford, who had organised our programme of speakers for the last few years.

In early January our speaker Andrew Parsons gave us some pointers about 'Unlocking your Local Church'. This involved looking out for architectural features which had hidden meanings. The talk was illustrated by slides showing examples from several churches in our area. We were joined by Maria Morris, a former villager, who was visiting from Sweden.

Visitors will be made very welcome at any of our forthcoming meetings, held in Shutford Village Hall on Tuesdays at 10am, when our future speakers will be:

- **February 1st**  
**Peter Tickler – Blood on the Keyboard**
- **March 1st**  
**Annual General Meeting (no speaker)**

*For further information on our WI,  
please contact Geraldine on 780579  
or Jenny on 780570*



## ST MARTIN'S CHURCH, SHUTFORD

### Illuminate & Celebrate

If you have a special celebration, a birthday, an anniversary or someone you wish to remember, please contact Ken Jeffs at [KJJ@kennyjohn.co.uk](mailto:KJJ@kennyjohn.co.uk) to arrange to illuminate the church tower.

Donations of £10 per occasion, for church funds, are welcome.

Below is a list of recent occasions remembered:

<b>Date</b>	<b>Name</b>	<b>Occasion</b>
15th November	Debbie & Mark Watts	40th Anniversary
28th November	Anon	Advent Sunday
30th November	Alasdair Gibbs	St Andrew's Day
5th, 12th, 19th December	Anon	Advent Sundays
16th December	Margaret & Brian	In memory of Barrie Le Gallez of Port Elliott, S Australia
25th December	Mervyn Benford	Fond memories of Datko Family
26th December	Anon	Boxing Day / St Stephen's Day
6th January	Anon	Epiphany
14th February	Anon	St Valentine's Day

The tower was illuminated during Advent and for the twelve days of Christmas and is usually illuminated on Sunday. When more than one sponsorship is received for a particular day, the tower is illuminated on additional days.





## News from Thistle Hill...

Start of a new season on the allotment, hope you're all looking forward to another growing season. Bit like the start of the football, same anticipation and excitement, probably the same highs and lows as well!

We wander round the allotment field most days, but there's not much growing now apart from a few cabbages and purple sprouting. Looks a bit bleak at the moment but there's a lot of wildlife about - rabbits, muntjacs and roe deer, we mostly see the tracks where they have been scratching for food. Rats as well, they will need sorting! Up above, plenty of birds, rooks, crows, red kites and buzzards, and I always see a robin looking hopeful when I am digging.

The two Shetland ponies are always happy to see us, scrounging for the odd carrot or apple, and now Tom the layby horse is starting to trust us and is very keen on the odd turnip the sheep have left.

So far it's been a pretty mild winter this year, but it should be expected to have a cold spell during late January and through February. It's hard to tell what the weather will do this year, but for

the last three years we have had a dry spell in spring. Last year it was the cold May that caused problems. Cold or not, it's best to hold off rather than try to sow in waterlogged, near-frozen ground. Parsnips are traditionally sown in February but I can't see any point. They will still grow big enough from a later sowing in late March/early April. As Keith first told me, don't bother planting till June, certainly last year, he wasn't that far off!

By now most of your seed order will be in. I always like to grow something different each year, I tried Florence fennel last year. It might be worth getting some blight resistant potato varieties this year. It's also worth lining your trenches with some straw, muck or grass clippings to hold the moisture. The soil is pretty light; it's great to work but dries out very quickly.

Talking manure, there is free horse manure from Janice on Lower End which Bill has been bringing up and sharing out. For a bigger load (cow muck) Sue from Middle Hill Farm will deliver for a small charge. Onion sets and garlic are usually planted direct now. Last year we had a big problem with onion fly and leaf miner affecting the growth. I'm not exactly sure when they actually turn up but it's usually as the weather warms during March and April. There are several ways round it - covering with fleece or enviromesh after planting is probably most straightforward, or you could pot the sets and plant out around mid April. If your feeling flush, buy the heat treated ones and plant mid-April.

Although low light levels are a problem now, you can start off salad crops like lettuce and spring onions on a sunny window sill and then put out into a cold greenhouse. Plant broad beans in pots to put out in March when the weather gets better. It's also time to sow your summer cauliflower and cabbages.

March is the month when things really start to move in the growing season - once the weeds start, you can start. Beetroot, broad beans, early peas, lettuce, radish, parsnips, spinach and beetroot can all be planted direct.

Looking forward to the plots getting back to work and seeing what everyone is growing.

***Keep digging...***



## Shutford in 1675

*By Mervyn Benford*

As a teacher of history I have long been intrigued by maps. The 100-map atlas by John Ogilby of roads in England and Wales in 1675 features Shutford High Street on one of the maps. The Duckham Oil Company in 1939, for publicity, produced a book of coloured versions of the maps - smaller of course. I use my copy to illustrate this article.

Ogilby had several careers, one as a dancing master in Ireland. Taking up printing he lost everything in the 1666 Fire of London. His road maps were more significant, made on foot and horseback, with an assistant pushing a large wheel, known as a waywiser, engineered to measure miles as it turned. Ogilby used the then new Statute mile we have today. Each map had a double page of local detail that is useful history along the routes.

The maps, average 17 inches by 13, presented roads in series of strips, six or seven to a page. Each map title had a cartouche decorating main place details en route, with details of further maps

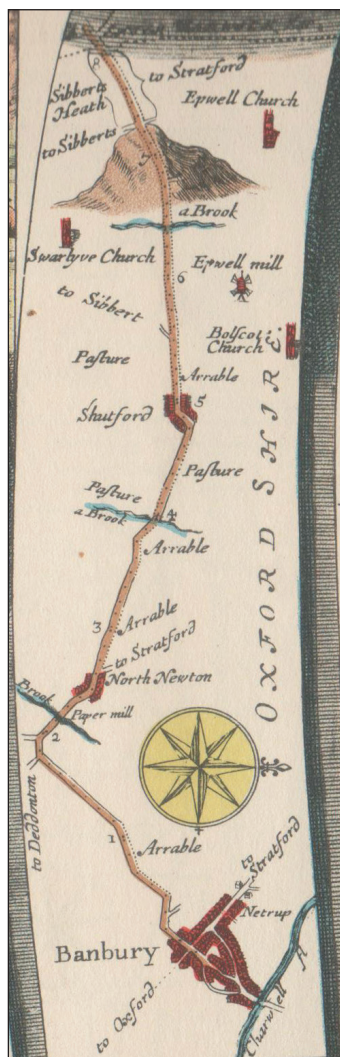


in that road series and local extensions. Originally printed plain black and white, it became popular in Victorian times to have them hand-coloured.

Shutford appears on map 13, from Buckingham to Bridgnorth via Banbury and Stratford. Strips 6 and 7 add the branch Banbury-(Chipping) Campden. It follows today's Broughton Road, then turns as today to North Newton over a brook whose mill made paper, then continues to Shutford over the Sor brook in its set of bends. The Sibbert left turn is shown, but the route continued via Epwell, with the mill and church shown on the right, with Swarlyve church to the left, and then Brailes and Shipston as today, crossing what it called the *Hoss* (Fosse?). Shutford church was not shown though, just a few houses either side of the bend.

*"The Nine Lives of John Ogilby"* by Alan Ereira, published in 2016, brings a fascinating hidden history to light, and reveals that Ogilby's "Britannia" is far more than a harmless road atlas: it is, rather, filled with secrets designed to serve Charles II's purpose. Ogilby had secured the support of the newly-restored (1660) Charles after the Cromwell era failed. In 1660 Charles established what we know as "The General Letter Office" that became Royal Mail. He wanted more accurate distance records to ensure fair charging. Travel and communication were increasing.

Though 17th Century maps, they do not yet have the value that original county maps by such as John Speed have - but they are history! 100 maps, one to a double page, in full leather binding was weighty to carry with you in coach or carriage but maps sold today are from such atlases, often by dealers breaking them up.



# Shutford Parish Council Meeting

*12th January 2022 at 7.30pm in the Village Hall*

**The meeting commenced at 7.30pm**

**Present:** Cllrs: Helen Nixseaman (Chair), Ashley Taylor (Vice Chair), George Reynolds, Paul Huewen, Stephen Barnes, Sandy Forrester, Chris Hall and David Best, Clerk and Responsible Financial Officer. One member of the public attended the meeting.

22/001	<b>Apologies for Absence:</b> None
22/002	<b>Declarations of Interest:</b> None
22/003	<b>Minutes of the last meeting:</b> It was RESOLVED that the minutes of the meeting held on 8th September 2021 were a correct record (unanimous) and signed by the Chairman.
22/004	<b>Matters arising from the minutes:</b> The Action list from the November meeting had not been circulated but the following actions had been completed: <ol style="list-style-type: none"> <li>1. The footpath from Lower End to the Allotments had been cleared</li> <li>2. Bulbs had been planted</li> <li>3. The potholes in Malthouse Lane had been filled</li> </ol>
22/005 22/005/1	<b>Parish Matters:</b> <b>Budget &amp; 2022-23 Precept</b> – The budget, which had been circulated prior to the meeting was reviewed and agreed. Inflation had been assumed at 5% on some expenditure items. It was agreed to raise the Precept by 4% for the following reasons: <ol style="list-style-type: none"> <li>1. It had not been raised in the previous year.</li> <li>2. Inflation has increased and increases have already been advised by some suppliers e.g. Cherwell dog bin emptying.</li> <li>3. There are additional costs that will have to be met in the coming financial year such as Parish Council elections and a tree survey. It is also anticipated that there will be costs related to tree care.</li> <li>4. It is prudent to keep a reasonable reserve in case of unforeseen expenditure.</li> <li>5. It is better to have small, annual increases rather than large jumps in the event of unexpected and unbudgeted expenditure.</li> <li>6. The estimated annual increase of a Council Tax Band D Property of £1.88 is considered reasonable and manageable.</li> </ol>
22/005/2	<b>Queen's Platinum Jubilee</b> – It was agreed to form a sub-committee consisting of Cllrs Helen Nixseaman, Stephen Barnes, Chris Hall and Ashley Taylor to co-ordinate activities and events on behalf of the Parish Council and that it will work with the Shutford Events Committee. The first event on 2nd June will be the lighting of the beacon at the top of Jesters Hill which will be held in conjunction with Swalcliffe.



22/005/3	<p>It is anticipated that there will be a bar at this event, and it is hoped that the Deddington Brass Band will be able to play. It is anticipated that there will be a village lunch on Sunday 5th June.</p> <p><b>Allotments –</b></p> <ol style="list-style-type: none"> <li>1. A new Shutford resident has taken on two plots on Thistle Hill.</li> <li>2. There is just one plot vacant currently which is on Thistle Hill next to the footpath.</li> <li>3. It is hoped that repair work to the shed that provides rainwater harvesting will be carried out when the weather improves.</li> </ol>
22/005/4	<p><b>Cherwell Local Plan 2040 –</b> It was agreed that the response to the Cherwell would be published on the website and the noticeboards. Cherwell will draft the local plan in May and June, and it is anticipated that Cherwell will consult on this draft in July – August.</p>
22/006	<p><b>Finance:</b></p> <p>The year-to-date accounts had been circulated prior to the meeting and were agreed. The bank reconciliation had not been completed and it was agreed that this would be circulated with the minutes. The current combined bank balances are £16,019.26 at 31st December</p>
22/007 22/007/1	<p><b>Correspondence:</b></p> <p><b>Recycling Bins overflowing –</b> This had been reported to the Parish Council and Cherwell had emptied them. The number to ring for emptying is on the bins. Any resident noticing that the bins are full is asked to ring Cherwell.</p>
22/007/2	<p><b>Work on the Village Ponds –</b> A resident was concerned at the report in the last minutes that work might be carried out on the pond in Church Lane. Advice from a consultant would be sought and residents would be consulted if any clearing work is carried out.</p>
22/008	<p><b>Planning:</b> No applications or notifications of decision have been received since the last meeting.</p>
22/009 22/009/1	<p><b>Any Other Business:</b></p> <p><b>Village Litter Pick –</b> It was agreed that the Clerk would contact Cherwell District Council to find out when the next village litter pick is planned.</p>
22/009/2	<p><b>Posts in front of the Tyte Pond –</b> One of the posts has disappeared and others are loose. It was agreed that a quote should be obtained to replace them for safety reasons to stop vehicles reversing into the pond.</p>
22/009/3	<p><b>Mirror at road junction –</b> A vote of thanks was given to the kind resident that cleaned the mirror at the road junction.</p>

The next Parish Council Meeting will be held on Wednesday 9th March 2022 at 7.30pm in the Village Hall.

There being no other business, the meeting closed at 8.59pm.



**KATHARINE  
HOUSE  
HOSPICE**

## **WHAT'S COMING UP IN 2022**

*As well as some old favourites, we're excited to be offering some incredible new challenge events throughout the year! So why not try something new in 2022 and help us to raise much-needed funds for our hospice? As always, your support and generosity means that we can continue to care for local people and families when they need it most.*

### **WALK THIS WAY...**

Our annual flagship fundraising event is back and this time it's by moonlight... The rebranded Moonlight Walk is taking place on 9 July 2022 at Banbury Rugby Club. We're going back to the eighties – so expect lots of leg warmers, bright colours, big hair and glow sticks galore. Get your tickets today and don't forget to tell family and friends!

### **CHARITY CHALLENGES**

Help us raise money with an adrenaline rush! We have the following challenge events available to sign up to now – the sky is literally the limit!

- Extreme Abseil: Take on the 418 feet National Lift Tower, Northampton on 1 April (no joke!)
- Blenheim Fun Run: Run, jog or walk around the stunning grounds on 15 May
- Wingwalking: Take to the skies on the top wing of a Boeing Stearman bi-plane on 26 May
- Ride London-Essex 100: Be part of Team KHH and cycle 100 miles on 29 May
- Oxford Half Marathon: Secure your spot for the 13.1 miles around Oxford on 16 October

### **HOW DOES YOUR GARDEN GROW?**

Our ever-popular Open Gardens will be making a welcome return in 2022 and we'd love to be able to offer even more events this year. If you'd like to get involved and welcome visitors to your garden, then get in touch. We're here to offer support and guidance to help make sure your Open Garden event is blooming marvellous.

### **TREE-MENDOUS SUCCESS**

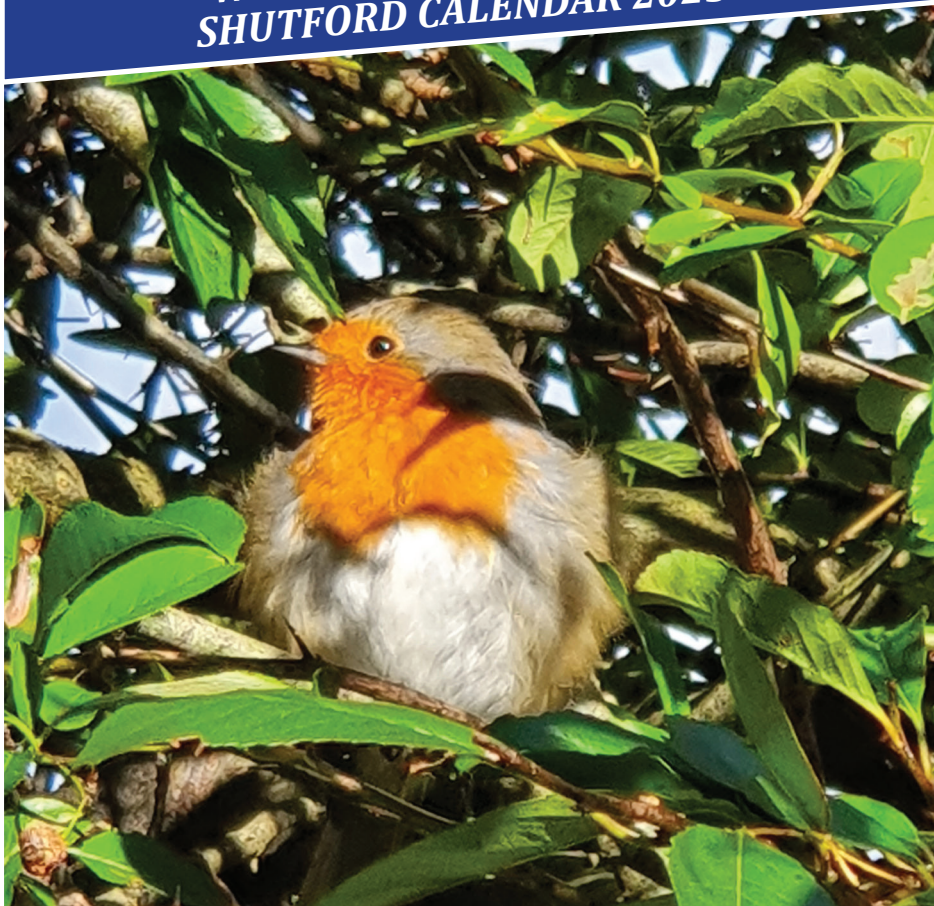
Thanks to our brilliant team of volunteers, our first-ever Tree-cycle scheme was a huge success and we were able to collect and chip 107 trees – helping to raise around £1,600 for our hospice! Next year, we plan to go even bigger and better with more postcodes, more collections and hopefully even more money raised! If you're interested in recycling your tree with us next year, then get in touch and put your postcode forward.

### **INTERNATIONAL WOMEN'S DAY**

To mark this year's International Women's Day, which will be celebrated across the world on 8 March, a festival of arts, community and business events will take place throughout the month at The Mill Arts Centre and Lock29. This year, all money raised is being donated to our hospice in memory of 41-year-old Becky Moyce from Hempton who died at Katharine House in July 2021. For more information, visit [iwdbanbury.com](http://iwdbanbury.com) or follow them on Instagram @iwd.banbury

***Head to our website for more details, events and news: [www.khh.org.uk](http://www.khh.org.uk).***

**WE NEED PHOTOS FOR THE  
SHUTFORD CALENDAR 2023!**



***Please keep sending in your photos for next year's  
Shutford calendar!***

We've had some gorgeous frosty days and beautiful sunrises, so don't forget to bring your phone with you if you're out on a walk... I'm sure there's lots of David Baileys and Annie Leibovitzs in Shutford! This cute robin taken by Sandie Long features in the 2022 calendar.

**Email your pictures to [shutfordvillagenews@gmail.com](mailto:shutfordvillagenews@gmail.com)**

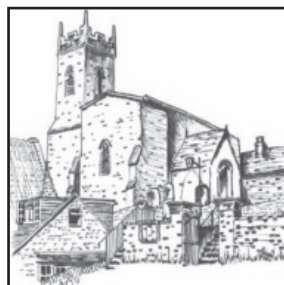
## Church news

**Rector** - Revd Neil Bowler – 788005

**Churchwarden** – Ken Jeffs – 788308

**Safeguarding** – John Hodgkins – 738565

**SERVICES:** See Wykeham News or Website



About 70 people took part in Acts of Remembrance on Remembrance Sunday at the village war memorial at 11.00am and/or later at the Service of Remembrance in church at 6.00pm. Poppy Wreaths were laid at the war memorial and Roll of Honour in church: Julie played the last post and reveille on both occasions. £754.41 for the RBL Poppy Appeal was collected in Shutford this year, including £145 from the retiring collection in church.

The PCC met on 8th December: items on the agenda included worship and outreach, communications, safeguarding and finance.

A Messy Church Event was held in Shutford Village Hall on 11th December – there were lots of crafts and the making of Christingles. The afternoon was enjoyed by all with a Christingle service with carols and refreshments to finish. There were 4 families with children in the hall, and we were able to arrange for them all to spend the afternoon safely in family groups.

The candle lit Carol Service on 19th December was well attended with more than 40 people in church. There were carols and readings, with an organist in church instead of the usual recorded music. It was good to have families with children in church and the village hall to celebrate this special time of year and hear the Christmas story. Collections, from Messy Church and the Carols totalling £140, have been given to the Children's Society.

A Christmas Card, featuring a photograph of an illuminated church tower, and details of services, was delivered to every house in the village. Thanks to Lorna, Phil and Marion for their help in producing the card.

The church tower was illuminated from mid-December until Epiphany, 6th January to remember specific occasions but also all our loved ones, nearby, further afield and those we still love but see no more.

To celebrate Christmas, the church was beautifully decorated with greenery and flowers, all donated and arranged by our flower ladies. Again, this year, our Christmas Tree was installed by the church steps with twinkling lights and a star for all to see. Our Christmas Day service was

held at 9.30am with a benefice one on St Stephen's Day (26th). We were able to sing carols again and of course Good King Wenceslas looked out on the feast of Stephen!

During 2021, overall attendance in church was about 600 – most regular worshippers have returned to church following coronavirus restrictions, although face coverings are required. However, as we have had no family occasions, such as weddings and baptisms, there have been fewer people in church compared to pre 2020 attendances. We have an average weekly congregation of about 8 with others worshipping on special occasions and festival days. There were 42 at the Remembrance and Carol Services, with 28 on Easter Sunday and 20 on Christmas Day. Online services are available on Wednesday and Sunday at 6.00pm for those unable to come to church.

Thanks to the generosity of our regular worshippers and others, we have been able to cover all our costs with a surplus for leaner times. As a parish we need to help with the annual cost of running the Oxford Diocese which is £20 million. Our contribution is £7532, part of the Wykeham Benefice share of £54,345 – most of which covers the cost of a stipendiary minister. Based on 2021 expenses, we need an income of about £220 per week to cover them.

We are grateful for a donation of £600 from the Shutford Get Together and income of £940 from our Illuminate and Celebrate Initiative and other donations which covered the cost of our church building insurance of £1975.

Many villagers value the presence of St Martin's Church and support us in various ways with cash, flowers, cleaning, refreshments, some grass cutting and their valuable time, all of which reduce our costs. The parish council continues to cover maintenance in the churchyard extension in Sibford Road.

With a small congregation, all support is invaluable enabling the church to continue to be viable and part of village life. The annual church meeting is scheduled for 4th April at which a new church council and churchwardens will be elected. If you are willing to take a more active part in church activities, please contact the rector or churchwarden – your church needs you!

For information about Advent and Christmas Events and Services visit the Wykeham Benefice website or contact [KJJ@kennyjohn.co.uk](mailto:KJJ@kennyjohn.co.uk).

***For church info see benefice website or contact  
KJJ@kennyjohn.co.uk***



## Dear friends,

These opening two verses from the Dublin born poet Thomas Kinsella, have been described as being beautifully reflective in the way that they describe the moment that the man stands in front of the mirror and sees not just the image of the present but also of the past. The young man he once was is not looking back at him anymore and the time of his youth will no longer return. On a February morning he stands in front of the mirror and reflects upon his life, but the man only sees himself from his own perspective. He cannot fully see what others see as they look at him or what lies ahead.

### ***Mirror in February***

*The day dawns, with scent of must and rain,  
Of opened soil, dark trees, dry bedroom air.  
Under the fading lamp, half dressed — my  
brain*

*Idling on some compulsive fantasy —  
I towel my shaven jaw and stop, and stare,  
Riveted by a dark exhausted eye,  
A dry down turning mouth.*

*It seems again that it is time to learn,  
In this untiring, crumbling place of growth  
To which, for the time being, I return.  
Now plainly in the mirror of my soul  
I read that I have looked my last on youth  
And little more; for they are not made whole  
That reach the age of Christ*

I can't quite believe that I've been here as your Rector now for just over a year, so much has happened. We have all lived individually and together as villages and communities through difficult times but also there have been many times and occasions of joy. As we enter into February 2022 it might be a good time to take stock and reflect, to look at ourselves in a metaphorical mirror, acknowledging of course we only see what we can see and maybe sometimes what we want to see. In my own case I might not always acknowledge that I can see an ever increasing amount of grey hair appearing on my head.

Whatever we might physically see, what we can't of course see is what lies ahead, but we can influence and effect greatly our lives going forward: what might be now truly important to us, how might we have been affected both physically, emotionally and spiritually by what we have lived through, how might this time have affected us to refocus our lives in the future?

Whatever answers might come to you to these questions, be assured that every day I hold you and everyone who lives and works in our villages in my daily morning prayers. If ever you would like to talk with me confidentially



about any worries, concerns or upset, or anything which you think I might be able to help you with in the year ahead, then please do just be in touch.

***Best wishes & prayers***

**Revd Neil Wykeham Benefice, Tel: 788005**

## **Shutford News Advertising Rates**

- Full page £15.00 per edition
- Half page £10.00 per edition
- Quarter page £5.00 per edition

**Includes advert / link on village website:  
[www.shutfordvillage.com](http://www.shutfordvillage.com)**

**Contact: [shutfordvillagenews@gmail.com](mailto:shutfordvillagenews@gmail.com)**

## **DEADLINE FOR NEXT ISSUE: Thursday 17th March 2022.**

The next planning meeting will take place on  
Monday 14th March 2022.

Please note dates are correct at the time of going to print.

## **The Shutford News & Comms Team**

- **Editor:** Angela Bliss
- **Editorial Team:** Margaret Holloway
- **Village Comms:** John Bailey
- **Village Website:** Ashley Taylor
- **Advertising & Accounts:** Angela Bliss
- **Distribution:** Pam Whittle & Di Wood
- **Printing:** [www.printed.com](http://www.printed.com)

***Contact us by email: [shutfordvillagenews@gmail.com](mailto:shutfordvillagenews@gmail.com)***



**24 Hr Emergency  
Call Out**  
for Failed or Leaking Oil Tanks  
and Pipework

## The Oil and Water Tank Specialist

★ Save money - install a Water Tank!

- Free Tank Surveys
- Domestic & Commercial Tank Replacements
- Tank Servicing & Tank Disposals
- AGA & Rayburn Servicing
- GAUGES - supplied and fitted
- Hire Tanks
- Commercial Jobs Undertaken
- OFTEC Registered



**Tel: 07799 643455**

[james@countyoiltanksolutions.com](mailto:james@countyoiltanksolutions.com)

[www.countyoiltanksolutions.com](http://www.countyoiltanksolutions.com)



## Home and Small Business Computer Services

Support for PCs and MACs

Repair and supply of laptop and desktop systems

Wireless and wired networks installed and maintained

Broadband connections configured

Home and Office telephone systems supplied and maintained

Audio and TV systems supplied and configured

Call Active Connexions - 01608 223140

or email [help@acl-it.co.uk](mailto:help@acl-it.co.uk)

[www.acl-it.co.uk](http://www.acl-it.co.uk)

Supporting clients in North Oxfordshire since 2001



SIMPLY BEAUTIFUL DECORATION

All forms of interior and exterior painting and decorating, specialising in murals.



T: 01295 811026

E: [pete@noahsarkpainting.co.uk](mailto:pete@noahsarkpainting.co.uk)

W: [noahsarkpainting.co.uk](http://noahsarkpainting.co.uk)

Pebsham Cottage, Aynho Road, Adderbury  
Oxfordshire, OX17 3NL



**SMITHS NEWSAGENTS**

**We deliver daily newspapers  
and magazines to the village.**

**Any combination of  
days/week catered for.**

**Ring us on 01295 268499  
or e-mail**

**[info@smithsnewsagents.co.uk](mailto:info@smithsnewsagents.co.uk)**

**APLINS**  
**SOLICITORS**

**Tel: 01295 251234**

## **Your Local Solicitors**

**House Sales & Purchases  
Wills, Probate & Lasting Powers of Attorney  
Trusts & Inheritance Tax Planning  
Commercial Property**

**36 West Bar, Banbury OX16 9RU  
[www.aplins.co.uk](http://www.aplins.co.uk)**

# R. WAKELIN HEATING SERVICES LTD

31 The Dairyground, Shutford, Nr. Banbury, Oxon. OX15 6PN.

01295 788359 • 07810754434

[ross@wakelinheating-services.co.uk](mailto:ross@wakelinheating-services.co.uk)

Gas • LPG • Oil

Boiler Servicing • Maintenance • Breakdowns

Gas Safe Register No: 190421 OFTEC Registration No: C6644



Cotswold Marquees Ltd

**Whatever your event we can supply all you need!**

Frame and Traditional Marquees, Linings and Starcloth, Furniture,  
Dancefloor, heating, Lighting and Accessories

**Bespoke manufacture of canvas and PVC covers**



Camping Tents, Caravan Awnings, Boat and Trailer  
Cover: Zip repair/replacement, Kader replacement,  
patching or re-inforcing seams



## 01608 686900

[www.cotswoldmarquees.co.uk](http://www.cotswoldmarquees.co.uk) • [info@cotswoldmarquees.co.uk](mailto:info@cotswoldmarquees.co.uk)

Unit 9, Brailes Industrial Estate, Lower Brailes, OX15 5JW



## RED HORSE VALE



Red Horse Vale are a long established and family run distributor of Fuels for heating and vehicles, as well as Building, Farm and Garden Supplies.

Solid Fuels • Logs and Kindling Wood  
Gas in Cylinders • Central Heating Oil  
Farm Oils • Sand and Ballast  
Postcrete • Cement • Slabs  
Fencing Materials • Garden Supplies  
Top Soil • Composts • Flower Pots  
Wood Chippings • Animal Feeds

Call us for a free quotation!  
OPEN HOURS

**MONDAY - SATURDAY**

**8am to 5pm**

[www.redhorsevale.co.uk](http://www.redhorsevale.co.uk)

**01926 642 832**

Windmill Farm, Banbury Road (A422), Oxhill,  
Warwickshire, CV35 0RP



BESPOKE DESIGN SERVICE FOR  
CUSTOM MADE FURNISHINGS

**Pattern book room for you  
to browse Fabric designs**

**Curtains, Blinds & Cushions**

**Loose covers & Lampsphade making**

**Headboards & bedspreads**

**Curtain poles & tracks**

**New Sofas & chairs & reupholstery**

**01295 788145**

[ann@annwoolgrove.com](mailto:ann@annwoolgrove.com) | [ann@yarnhill.co.uk](mailto:ann@yarnhill.co.uk)

[www.annwoolgrove.com](http://www.annwoolgrove.com)



**BESPOKE HANDMADE LAMPSHADES**

**PERSONALISED DESIGN SERVICE**

**CONTEMPORARY AND CLASSICAL DESIGNS**

**EXTENSIVE RANGE OF FABRICS AND MANY BEAUTIFUL TRIMS**

**RE-COVERING SERVICE AVAILABLE**

**ANN WOOLGROVE**

TEL/FAX: 01295 788145

[ann@yarnhill.co.uk](mailto:ann@yarnhill.co.uk)

Oxfordshire/Cotswolds

**LYNN HAMPTON**

TEL: 01442 215577

[lynn@yarnhill.co.uk](mailto:lynn@yarnhill.co.uk)

Hertfordshire/London

**[www.yarnhill.co.uk](http://www.yarnhill.co.uk)**



## Jonathan Perry – Chimney Sweep

Guild of Master Chimney Sweeps Qualified

Agas, Inglenooks, multi-fuel stoves and open fires all swept. All work certified for house insurance purposes.

For a clean professional and friendly service please contact me on:

**Mobile: 07557 058051**

**Email: [jperrychimneysweep@gmail.com](mailto:jperrychimneysweep@gmail.com)**



Founded in 1968, Avonvale Equine Practice has been providing high quality, professional and compassionate care to all equines within our practice area - 24 hours a day, 365 days a year. Our highly experienced team offer the latest in diagnostics and treatment options, with a full range of mobile and clinic based equipment enabling us to cater for all your needs.

- 24 hour emergency call out
- Free Zone Visit Scheme
- Dentistry and Vaccination
- Full Surgical Facilities (including Colic Surgery)
- Lameness Work-ups
- Medical Investigation
- Portable Videoscopes, X-ray, Ultrasound and Shockwave
- Full Stud and AI Services
- Pre-purchase Examinations
- JMB Height Measurement
- Worm Egg Counts
- Laboratory Facilities

**Ratley Lodge  
Ratley  
Banbury  
Oxfordshire OX15 6DT**

**Tel: 01295 670501  
[www.avonvaleequine.co.uk](http://www.avonvaleequine.co.uk)**





**S.K. Auto Repairs**

SERVICE • REPAIRS • TYRES • MOT TESTING  
VISIT US AT THE GOOD GARAGE SCHEME

Unit 6, Manor Farm Buildings, Mollington Lane  
Shotteswell, Banbury, Oxfordshire OX17 1HZ

Telephone: 01295 738300  
[www.skautorepairs.co.uk](http://www.skautorepairs.co.uk)

**PLT**  **PLUMBING**

**MILCOMBE, BANBURY**

*FOR ALL YOUR DOMESTIC PLUMBING*

FULLY QUALIFIED ENGINEER

**T: 01295 368150 M: 0742 5982855**

**E-mail: [info@pltplumbing.co.uk](mailto:info@pltplumbing.co.uk)**

# Nationwide Sun & Rain Awnings

**All Nationwide sun & rain awnings are  
tailormade from a vast range of  
hard wearing and colourful Markilux fabrics.**

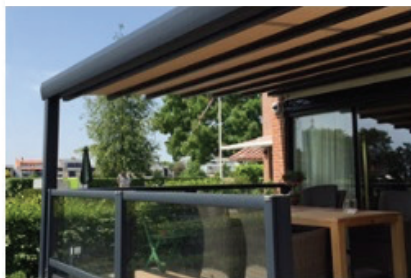
**Sun - Rain Pergola**



**Sun Canopies**



**Terrace Awnings**



**Contact Barry Packman, Sales Designer**  
**Local: Shutford OX15 6PG**  
**Tel: 07836 507664**





**We offer safe affordable  
counselling by fully qualified  
therapists. For your  
FREE ASSESSMENT phone  
01295 231320 or visit our website:  
[www.banburytherapycentre.com](http://www.banburytherapycentre.com)  
for more information**







# MadMolly

Lovely Things for Lovely People

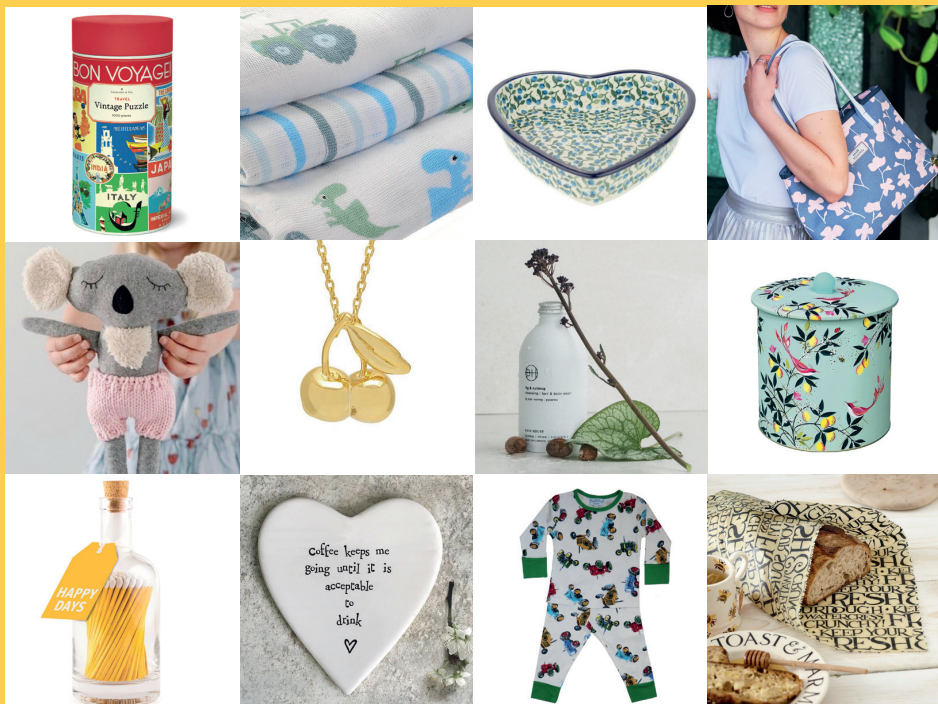
OUR LOVELY NEW SHOP IS NOW OPEN AT  
6, MARKET PLACE, SHIPSTON-ON-STOUR,  
WARWICKSHIRE CV36 4AG  
OPEN 9.30AM - 4.30PM MONDAY - SATURDAY

OR VISIT US AT SUGARSWELL BUSINESS PARK,  
SHENINGTON, OXON, OX15 6HW

OPEN 10AM - 2.30PM, MONDAY TO FRIDAY\*

\* TO ARRANGE VISITS OUTSIDE THESE TIMES CALL  
01295 688286 OR EMAIL SALES@MADMOLLY.CO.UK

YOU CAN ALSO FIND US ONLINE AT: [MADMOLLY.CO.UK](http://MADMOLLY.CO.UK) OR [FACEBOOK.COM/LOVELYTHINGS4LOVELYPEOPLE](https://www.facebook.com/lovelythings4lovelypeople)





Email  
info@thegeorge  
anddragon.com



Phone  
01295 780320

Website: [www.thegeorgeanddragon.com](http://www.thegeorgeanddragon.com)

Happy New Year!

Quiz time is back!

Maximum 6 people per team.

Please book to allow adequate spacing.

Sundays at 7pm – Dates to be advertised on pub boards.

Opening times:

Mon - Thurs - 5 - 10pm

Food 5 - 8 No food Wednesday

Friday - 5 - 11pm

Food 5 - 8

Sat - 12 - 11pm

Food 12 - 8

Sun - 12 - 10

Food 12 - 8

Due to staffing shortages, there may be last minute changes, these will be advertised on facebook.

We are currently recruiting for weekend bar staff. Applicants must be 18 years or above. Please contact Juliette on [info@thegeorgeanddragon.com](mailto:info@thegeorgeanddragon.com) for more information or to apply.

Thank you for your continued support and stay safe.